



SEDAAG

**2024 Steering Committee Agenda
Sunday, November 24. 8:30am-11:00am**

Teal Ballroom

(Breakfast will be provided)

Paper Free Meeting:

Reports available here: <https://sedaag.org/meeting-reports/>

1. Welcome and Introductions.
2. Thanks to outgoing officers and representatives.
3. Update on SEDAAG meetings
 - a. SEDAAG 2024 Greenville Meeting
 - b. General guidelines on meeting pricing discussion
 - c. 2025 meeting Update: Lexington, KY (Room: \$139/Night in Hilton Lexington Downtown) (Contact person: Matt Willson, UKY)
 - d. 2026 meeting Update: Tuscaloosa, AL
 - e. 2027 meeting Update: Possibly in Nashville (main organizers at Tennessee State University—in communications)
4. Finances
 - a. Since last year
 - b. Registration price
 - c. Membership prices
 - d. AAG Support Grants
5. Future of Young professionals' lunch
6. Future of State rep position responsibility
 - a. Can we make SEDAAG State Representative to organize Geo Bowl?
7. We are a globally visible organization
 - a. Notes from the October Project MUSE activity report
8. Formalize the Geo Bowl and Education Committees



SEDAAG

9. Endowment Committee (New Initiative?)
 - a. SEDAAG Travel Grant/Registration offer for Students?
10. State Report Highlights (State Representatives)
11. Vice President and Program Chair Report (Potter)
12. Treasurer's Report (Praskievicz)
13. Secretary/Webmaster's Report and Communications (Sciuchetti)
14. Student Representative Update (Flach)
 - a. Young professionals lunch

Break... Resume at 10am

15. Geography Bowl Report (Drake)
16. *Southeastern Geographer* Report (Ambinakudige and Williams)
17. AAG Southeastern Div. Regional Councilor update (Lannon)
18. IDEAL Committee (Clay Tucker)
19. Honors Committee (Michael Ewers)
20. Nominations Committee (Jordan Cissell)
21. Education Committee Report (Jennifer Rhan)
22. SEDAAG 2024, Greenville, SC (Geoffrey)
23. SEDAAG 2025, Lexington, KY
24. SEDAAG 2026, Tuscaloosa, AL
25. SEDAAG 2027, Nashville, TN?
26. New business?

9.b. Florida SEDAAG Survey Summary: 2024-2025 Academic Year

Summary prepared by Dr. David Keellings, University of Florida

A. Institutional Information

Eleven universities and colleges in Florida were identified as offering degrees and/or multiple courses in geography or related fields. Three of these institutions completed the 2024 SEDAAG State of the Field Survey. Another single institution communicated with me personally, but did not fill out the survey. The contacts and degree information for these departments are summarized in the table below (Table 1).

Table 1. Universities Responding to the 2024-2025 SEDAAG Survey

Institution	Department and Survey Contact	Geography Degrees Offered
University of Miami	Geography and Sustainable Development Dr. José Maria Cardoso da Silva	B.A. Geography B.S. Geography Undergrad Cert. Sustainability M.A. Geography M.P.S. Urban Sustainability and Resilience Grad Cert. Geospatial Technology
Florida Atlantic University	Geosciences Dr. James Gammack-Clark	B.A./B.S. Geosciences (can be with Geography concentration) Combined B.S./M.S. Geosciences (can be with Geography concentration) Undergrad Cert. GIS Minor Geography M.S. Geosciences Ph.D. Geosciences
University of Florida	Department of Geography Dr. Jane Southworth	B.A in Geography B.S. in Geography M.A. in Geography M.S. in Geography Ph.D. in Geography Certificate in Geospatial Information Analysis Certificate in GeoAI Certificate in Medical Geography Certificate in Meteorology and Climatology
University of North Florida	Department of Economics and Geography Dr. Sharon Cobb	Minor in Geography

B. Personnel

Table 2. Personnel

University	Department Chair	Full-Time Geography Faculty	Part-Time Geography Faculty	New Geography Faculty
University of Miami	Dr. José Maria Cardoso da Silva	11	1	This year: 0 Next year: 0
Florida Atlantic University	Dr. Tiffany Roberts Briggs	15	2	This year: 1 Next year: TBD
University of Florida	Dr. Jane Southworth	24	1	This year: 1 Next year: 1
University of North Florida	Dr. Russell Triplett	2	3	This year: 0 Next year: 0

C. Trends in Student Enrollment and Majors

Table 3 gives an overview of trends in student enrollment in geography classes, the number of geography majors, and number of courses offered. The table also lists some of the main areas of employment for geography graduates. The data has been divided into undergraduate (U) and graduate (G) level where applicable.

- Numbers are overall stable or growing.
- The University of Florida reports a strong growth in the number of courses offered over the last few years, as a result of a number of new faculty being hired. This has increased undergrad enrollment, as well as grown the graduate program.
- UNF does not have a Geography program, so most of the questions do not apply, however, Chair Russell Triplett indicated that the trends in student enrollments at the undergraduate level are stable (mostly Economic Geography, Cultural Geography and GIS) and at the graduate level (GIS focused) are increasing. All the courses are electives for the College of Business Bachelor of Business Degree.

Table 3. Trends in student enrollment

Measure	Level (U/G)	University of Miami	Florida Atlantic University	University of Florida	University of North Florida
Student enrollment in geography classes	<i>U</i>	Growing	Stable	Stable	Stable
	<i>G</i>	Growing	Stable	Growing	Growing
Geography Majors	<i>U</i>	Growing	Growing	Stable	Stable
	<i>G</i>	Declining	Growing	Growing	-
Course offerings	<i>U</i>	Growing	Stable	Growing	-
	<i>G</i>	Growing	Stable	Growing	-
	<i>Gen Ed.</i>	Stable	Stable	Stable	-
	<i>Human Geog.</i>	Stable	Declining	Stable	-
	<i>Physical Geog.</i>	Stable	Stable	Stable	-
	<i>GIST</i>	Stable	Stable	Growing	Growing
	<i>Env. Geog.</i>	Growing	Stable	Stable	-
Jobs for Geography Graduates	<i>U</i>	Public/private sector	Public/private sector	Environmental jobs (public/private sector), grad school	GIS jobs
	<i>G</i>		Academia	Academia, NGOs, government	

D. State of Geography.

Please provide a few statements summarizing your view on the "State of Geography" in your institution and state, identifying both positive and negative aspects. Feel free to speak to specific a range of specific issues, including but not limited to budget, curriculum, turf wars, technology.

Below are copied statements from the different institutions. Some of the statements have been shortened/edited for clarity.

- UM: The Department of Geography and Sustainable Development has been performing exceptionally well. Over the past five years, we have implemented a straightforward and innovative strategic plan along with new management practices. These changes have led to an improvement in all of our performance indicators, positioning us as one of the top departments in the College of Arts and Sciences. While the plan faced opposition from conservative minds, the support from the new generation of faculty enabled its successful implementation, benefitting everyone involved.

- FAU: While our department remains in an overall strong position, perhaps the biggest challenge we experience with Geography is its 'branding' in the American K-12 education system. Most students do not graduate American High Schools with an accurate understanding of the discipline and are thus generally unenthused about pursuing a career in Geography when they arrive as Freshmen. This contrasts strongly with the experience of other countries, such as the United Kingdom. As such, our constant mission is to help students discover Geography as they matriculate through the University. Like many departments, our success derives from emphasizing applied fields like GIS and environmental geography with a focus on climate change.
- UF: Geography is a well-respected and quite well funded program at UF, mainly due to our high ranking in our college for our external funding production. Geography has been in the top 5 of units/departments in terms of research productivity in our college over the last 6 years, and this year is ranked #3. We are in a generally strong position. New Meteorology degree started Fall 2024, highest # of graduate students in a decade, developing new transfer programs from statewide community colleges with guaranteed admissions to UF Geography, immersed in AI at UF - a major university wide focus, started a new External Advisory Board last year and going well with great advice. Overall, a very healthy and growing program.
- UNF: Geography is a small part of our department in terms of the number of faculty but provides a consistent contribution to the University's General Education program and the College's GIS and Economic Geography core courses.

E. State of SEDAAG

Please provide a few statements summarizing your view on the "State of SEDAAG," providing some feedback on the Division's strengths and weaknesses. What suggestions do have in improving the Regional Division as it seeks to serve members through the annual meeting, journal, awards program, etc.?

- UM: I do not have much interaction with SEDAAG, but I am confident that the division does an excellent job of creating new networking opportunities for undergraduate and graduate students.
- FAU: SEDAAG continues to support the discipline throughout the southeast. Its work is key to the discipline's continued success throughout the region.
- UF: You need to move the timing of the annual meeting - it should NOT be right before Thanksgiving - its insane and always has been. Please change it so more people can attend - this discriminates against those with family responsibilities, kids in school etc.

The view of SEDAAG is positive among the departments that answered the survey. Some departments have consistent faculty and grad student attendance at the annual meeting, while attendance is more sporadic from other departments. The annual meeting is described as one of the top geography conferences, and excellent for professional development, in particular for Stand Alone Geographers, Geographers from small programs, and for grad students.

9.c. Georgia SEDAAG Survey Summary: 2023 - 2024 Academic Year

Summary prepared by Dr. Helen Rosko, Assistant Professor at Georgia Southern University

A. Institutional Information

Approximately 12 universities in Georgia offer courses and/or degrees in geography or related fields. This is one up from last years report to include the Georgia Institute of Technology that offers a GIS masters and doctoral program. Nine of these universities responded to the 2023 SEDAAG Survey. The contacts and degree information for all 12 departments are summarized in the table below, with notations from the three that did not respond:

Table 1. Universities Responding to the 2023 SEDAAG Survey

Institution	Department and Survey Contact	Geography Degrees Offered & Related Information
Columbus State University <i>*Did not respond to survey</i>	Department of History, Philosophy, & Geography	<ul style="list-style-type: none"> ● B.S. Interdisciplinary Studies ● Minor <ul style="list-style-type: none"> ○ Geographic Information Systems and Science ○ Geography
Fort Valley State University <i>*Did not respond to survey</i>	Department of Behavioral & Social Sciences Dr. Iheayni Osondu ● Professor of Geography & GIS	<ul style="list-style-type: none"> ● Minor in Geography
Georgia College and State University	Department of History and Geography Dr. Amy Sumpter ● Professor of Geography & Geography Coordinator	<ul style="list-style-type: none"> ● B.A. in Geography ● Certificate <ul style="list-style-type: none"> ○ Geographic Information Systems
Georgia Gwinnett College	Department of History and Geography Dr. David Dorell ● Associate Professor of Geography	<ul style="list-style-type: none"> ● Geography concentration in History degree ● Serves: General Education core and Environmental Studies program
Georgia Institute of Technology	School of City and Regional Planning Rama Sivakumar ● Research Engineer, Center for GIS	<ul style="list-style-type: none"> ● Masters in GIS ● Ph.D. in GIS
Georgia Southern University	School of Earth, Environment, & Sustainability - Program of Geosciences Dr. Rob Yarbrough ● Associate Professor of Geography	<ul style="list-style-type: none"> ● B.S. Geosciences <ul style="list-style-type: none"> ○ Concentration: Geography ● Minor: <ul style="list-style-type: none"> ○ Geography ○ Geographic Information Systems

<p>Georgia State University</p>	<p>Department of Geosciences</p> <p>Dr. Katherine Hankins</p> <ul style="list-style-type: none"> ● Professor & Chair 	<ul style="list-style-type: none"> ● B.A. in Geosciences <ul style="list-style-type: none"> ○ Concentration: Geography ● B.S. in Geosciences <ul style="list-style-type: none"> ○ Concentration: Geography ● Certificate <ul style="list-style-type: none"> ○ Geographic Information Systems (Professional) ● M.S. in Geosciences <ul style="list-style-type: none"> ○ Concentration: Geography
<p>Kennesaw State University</p>	<p>Department of Geography & Anthropology</p> <p>Dr. Shannon Hall</p> <ul style="list-style-type: none"> ● Lecturer of Geography 	<ul style="list-style-type: none"> ● B.A. in Geography ● B.S. Geospatial Sciences ● Minor: <ul style="list-style-type: none"> ○ Geography ○ Environmental Studies ● Certificates: <ul style="list-style-type: none"> ○ Geographic Information Systems ○ Land surveying
<p>University of Georgia <i>*Did not respond to survey</i></p>	<p>Department of Geography</p> <ul style="list-style-type: none"> ● Dr. Hilda Kurtz 	<ul style="list-style-type: none"> ● B.A. in Geography ● B.S. in Geography ● B.S. in Atmospheric Sciences ● Minor in Geography ● Certificates: <ul style="list-style-type: none"> ○ Geographic Information Systems ○ Local Food Systems ○ Urban & Metropolitan Studies
<p>University of North Georgia</p>	<p>Lewis F. Rogers Institute for Environmental and Spatial Analysis</p> <p>Dr. Jacob M. Bateman McDonald</p> <ul style="list-style-type: none"> ● Association Professor of Geography & Geospatial Science 	<ul style="list-style-type: none"> ● B.S. Environmental Spatial Analysis
<p>University of West Georgia</p>	<p>School of Field Investigations and Experimental Sciences (Geography Program)</p> <p>Dr. Andy Walter</p> <ul style="list-style-type: none"> ● Professor of Geography & Director of Geography Program 	<ul style="list-style-type: none"> ● B.S. in Geography <ul style="list-style-type: none"> ○ Minor in Geography ● Certificates: <ul style="list-style-type: none"> ○ Geographic Information Systems
<p>Valdosta State University</p>	<p>Department of Chemistry & Geosciences</p> <p>Dr. Kurt Winkelmann</p> <ul style="list-style-type: none"> ● Professor and Head 	<ul style="list-style-type: none"> ● B.S. in Environmental Geosciences

B. Trends in Student Enrollment in Geography Courses

Overall, enrollment in *undergraduate* geography courses in the state of Georgia is varied with only one program, the University of West Georgia reporting *declining* enrollment, struggling to

bounce back from the COVID-19 pandemic (from record high graduates and course enrollments in 2019).

The majority of programs report **stable** enrollment in **undergraduate** courses (6) (e.g. Georgia College & State University, Georgia Southern University, Georgia State University, Valdosta State, Kennesaw, and University of North Georgia). In these programs, general education courses have high enrollment and help create stability among other, upper-level geography courses. Many of the programs reporting stable enrollment mention that with more University (USG) resources such as adjunct, lecturing, or visiting faculty they could grow their enrollment beyond their current capacity.

Only one program reported **growth** in **undergraduate** enrollment (Georgia Gwinnett College). Georgia Gwinnett College reports that because Geography courses fall under a relatively new concentration within History and that these courses are primarily service courses, they tend to receive high enrollment across the College.

There are four programs that responded to the survey offering courses at the **graduate** level, this is two more than last year's report which is exciting (e.g., Georgia Institute for Technology, University of West Georgia, Georgia State, and Georgia Southern University). These programs report **steady** and full courses in their programs. The Masters of Applied Geography (MSAG) program at Georgia Southern University is phasing out but merging with newish degree programs in Environmental Sciences (M.S. & Ph.D.). Faculty are optimistic that some of these graduate students will enroll in graduate level geography courses. Georgia Institute of Technology and University of West Georgia report stable graduate enrollment in their graduate courses. Georgia State reports that their graduate-level courses are growing and overall interest in Masters of Geosciences is growing.

C. Trends in Geography Majors

The number of **undergraduate** geography majors appears to be **stable** for most programs that offer a major (3) (e.g., University of North Georgia, Georgia Southern University, & Kennesaw State University).

Only one program, University of West Georgia, reports a **decline** in the number of **undergraduate** geography majors. The program is currently working with the Provost to merge with Geology (also “low-productivity”) to roll out a new major in Earth and Environmental Science and concentrations in Environmental Sustainability, GIS, and Professional Geology.

Georgia State University and Valdosta State University are the only two programs to report a **growing** number of majors in geography courses. For Georgia State University, they are still on an upward growth trajectory related to their recent restructuring towards Geosciences. It is unclear why Valdosta State University reported a growing number of majors.

Both the Georgia Institute of Technology and the University of West Georgia report a **stable** number of **graduate** majors. Georgia State University is the only program to report a **growing** number of graduate majors.

D. Trends in Course Offerings

A majority of programs report **stable** trends in **undergraduate** geography course offerings (7) (e.g. Georgia College & State University, Georgia Southern University, Georgia State University, Kennesaw State University, University of West Georgia, University of North Georgia, Valdosta State). The most stable courses tend to be core/general education/service courses offered at lower-levels (e.g., University of North Georgia, University of West Georgia, Valdosta State University, Georgia State University, Georgia Southern University, Georgia College & State University). Other stability is seen with human geography across three programs (e.g., University of North Georgia, Kennesaw State University, and Georgia Southern University). Physical geography remains stable across all seven programs. GIS and geospatial technologies courses are reported as stable at four programs (e.g., University of West Georgia, University of North Georgia, Georgia Gwinnett College, and Georgia College & State University). Finally environmental geography courses remain stable at five programs (e.g., University of North Georgia, Kennesaw State University, Valdosta State University, Georgia Gwinnett College, and Georgia College & State University).

The programs that report **declines** (4) in course offerings only do so in relation to **human geography** courses at the **undergraduate** level (e.g., University of West Georgia, Valdosta State University, Georgia College & State University). Georgia Southern University has reduced their offering of their highly enrolled general/service course, World Regional Geography due to losing a Visiting Professor line and two human geographer having fellowship positions in other parts of the University.

Other programs report **increasing** the number of **undergraduate** geography course offerings (5) (e.g. Georgia College & State University, Georgia Gwinnett College, Georgia State University, Kennesaw State University, & Valdosta State University). Increasing number of course offerings are trending in general education (Georgia Gwinnett College, Kennesaw State University, Georgia College & State University, & Valdosta State University) and physical geography (Georgia Gwinnett College). Georgia State University is the only program to report growth in human geography, GIS and geospatial technologies, and environmental geography.

At the **graduate** level, courses remain **stable** at Georgia Institute of Technology around GIS/geospatial technologies and environmental geography. While University of West Georgia reports **stable** course offerings and Georgia State University reports an **increasing** number of graduate course offerings.

E. Jobs for Geography Graduates

All responding programs report excellent job placement for geography majors and related students in their programs. The **GIS industry** is overwhelmingly reported as the top job placement across all reporting programs (9) (e.g., Georgia Institute of Technology, Georgia College & State University, Georgia Gwinnett College, Georgia Southern University, Georgia State University, Kennesaw State, University of West Georgia, University of North Georgia, & Valdosta State University). GIS jobs tend to be in the private sector (e.g., engineering), public

(e.g., municipal, county, state) or other organizations (e.g., nonprofits). There is a general trend towards **environmentally related jobs** across most programs (8) (e.g., environmental consulting, environmental modeling, environmental engineering, land surveying etc.) (e.g, Georgia Institute of Technology, Georgia Gwinnett College, Georgia State University, Kennesaw State University, University of West Georgia, University of North Georgia, Georgia Southern University, & Valdosta State University). Other programs report high placement in **urban planning/development** (e.g, Georgia Southern University, Georgia State University, Georgia Institute of Technology, & University of West Georgia). Other majors find themselves placed into a variety of positions such as **nonprofits** (e.g., Georgia Institute of Technology), broadly defined **government** work (e.g., Georgia Institute of Technology, University of West Georgia, Georgia State University, Georgia Southern University), **insurance** (e.g., Georgia College & State University), **real estate** (e.g., Georgia College & State University), and **historic preservation** (e.g., Georgia College & State University), and **education** (e.g., Georgia College & State University). Finally, three programs report students continuing on to **graduate school** (e.g, Georgia State University, Georgia Southern University & University of North Georgia).

F. Personnel

Table 2. Personnel

University	Department Head	Full-Time Geography Faculty	Part-Time Geography Faculty	New Geography Faculty
Columbus State University <i>*Did not respond to survey</i>	Dr. Bryan Banks (History)	1	0	• N/A
Fort Valley State University <i>*Did not respond to survey</i>	Dr. Iheayni Osondu	Unclear	Unclear	Unknown
Georgia College & State University	Dr. Aran MacKinnon (History)	3	0	• N/A lost a limited-term instructor position to low majors
Georgia Gwinnett College	Dr. Nathan Orgill (History)	5	5	• Sarmina Scales, Charles Folds, and Peter Yaukey (all part-time)
Georgia Institute of Technology	Dr. Gulsah Akar (School of City & Regional Planning)	4	5	• 1
Georgia Southern University	Dr. Danny Gleason (Biology)	7	0	• N/A
Georgia State University	Dr. Katherine Hankins	21 - Geosciences (~ ½ Geographers)	8	• N/A

Kennesaw State University	Dr. Brandon Lundy (Anthropology)	17	14	<ul style="list-style-type: none"> • Dr. Dave Doran (full-time lecturer) • Rajesh Sigdel & Qihang Qui limited term faculty • Hiring 1 Geospatial Sciences for AY 25/26
University of Georgia <i>*Did not respond to survey</i>	Dr. Hilda Kurtz	25	Unclear	Unclear
University of West Georgia	Dr. Greg Payne (Biology)	6	0	<ul style="list-style-type: none"> • N/A
University of North Georgia	Dr. Jeff Turk (Engineering)	4	4	<ul style="list-style-type: none"> • N/A
Valdosta State University	Dr. Kurt Winkelman	3	0	<ul style="list-style-type: none"> • Dr. Debasree Chatterjee • Plan to hire new faculty

G. State of Geography

The State of Geography in Georgia is varied. Several programs report **robustness** and **growth** related to GIS programs/courses (major, minors, certificates, etc.) (e.g., Georgia State University, Georgia College & State University, & University of North Georgia).

Other programs report increasing **pressure** and **marginalization** primarily related to politically-driven direction from the Board of Regents that flags low-enrolling and low-awarding programs and overall state sanctioned budget cuts (4) (e.g., Georgia College & State University, Georgia Southern University, University of West Georgia, Georgia Gwinnett College). To counter this pressure some programs are embracing more GIS/geospatial technologies approaches to geography or rebranding more broadly along the lines of Geosciences, Environment, Sustainability, and GIS (e.g., Georgia Southern University, Georgia State University, University of West Georgia). Other pressure and marginalization are related to broader decline of traditional academic programs and subjects in higher education and overall turbulence in higher education (e.g., Georgia Gwinnett College & Valdosta State University). Other references of pressure and marginalization are cited by many programs around lack of resources (e.g., faculty/staff lines) to be able to increase overall capacity and build enrollments (5) (e.g., Georgia Southern University, Georgia College & State University, University of West Georgia, Georgia Gwinnett College, University of North Georgia). In other words, it's not for a lack of effort to grow geography but a lack of institutional validation and support. Finally, multiple programs report overall **instability** and **uncertainty** related to changing administrative leadership and the overall declining political climate in relation to the value of higher education and geography in particula (e.g., Georgia Southern University, Georgia College & State University, University of West Georgia, Georgia Gwinnett College).

Georgia State University remains the only program in the State to report **stability** and **growth**, though this is primarily limited to their graduate programs. They unfortunately report having to teach out their B.A. in geography due to many of the reasons cited above. This is true across other programs (e.g., Georgia Southern University & University of West Georgia) and it is particularly concerning to see the overall decline in human geography course offerings at many institutes. At any rate, I maintain that Georgia State University provides an excellent example of resilience and adaptation that can be a beacon of hope to other programs in the state.

Each responding programs complete response is quoted below:

Georgia College & State University: “The three full-time geography faculty here do a lot of teaching in the core curriculum. I would say our focus in the last few years has been on GIS and core. We are considered a low-awarding program (20 majors), even though proportionate to the size of our student body, we have more majors than UGA. We are doing many things to try to increase the visibility of geography on campus including semesterly meetings with Academic Advising, sponsoring speakers and GIS-day events (in areas like sustainability and public health, which are popular on campus). We are also starting to work with admissions to get lists of students who indicate an interest in geography so that we can contact them personally before they make their decision about college. Our main GIS professor also manages the lab and is the administrator for our ESRI license. One human geography professor has gone back to grad school to earn a GIS certificate to incorporate more GIS-work into the human courses. We lost our limited-term GIS lecturer, due to budget constraints. We have never really had a very large pool of applications for our GIS lecturer position because we are asking for that person to teach 15 credit hours a semester, and we were never able to get permission to pay even the average salary of a GIS lecturer in the state. It is frustrating because the rules that apply to the College of Business (you know, these professors have to be paid a lot because they could work in the private sector!) does not apply to those of us in Arts and Sciences. Mathematics has created a Data Analytics certificate and incorporated GIS classes into their curriculum from the onset, but the Data Science degree in the COB does not count any GEOG or GIS classes in their programs, even though they count courses in Political Science, Biology, etc. We are trying to get permission for our GIS courses to count as electives..”

Georgia Gwinnett College: “We are dependent on the General Education curriculum. The recent Georgia rewrite of this curriculum places us in a more vulnerable position than ever before. To counteract this, we have worked to expand the range of courses offered and where they may apply. The current atmosphere is chaotic and it is unclear if we will be successful in holding on, much less expanding. The fact that our institution now has interim deans in most positions, and an interim provost as well, injects even more uncertainty into the mix.”

Kennesaw State University: “This hasn't really changed since last year. I feel that the geography program is well supported by our college and the university, and I think we're treated fairly in terms of the budget, curriculum, and technology requests.”

Georgia Southern University: “Our move to merge with Geology as Geosciences was rolled out this year. Our transformation to the School of Earth, Environment, & Sustainability has meant

we have more degree programs and graduate options (one of the only awarding Ph.D.s at the University - Environmental Science) which has helped increase enrollment in courses, but it has also lead to a decline in our MSAG program, which we be phased out due to being low-enrolling and low-awarding. We are currently searching for a new chair and hopeful new leadership will prioritize our programming and help strategize ways to keep geography stable *and* growing in the coming years. However, recent changes at the Federal and State level of general education and education trends broadly are alarming and concerning.”

Georgia State University: “Despite recent and significant growth in enrollment our BA Geosciences with a concentration in Geography, we are forced to discontinue the BA degree after 2024-2025 given low historic averages of graduates. The BA has about 30 students enrolled; the BS has about 100. We also have the BIS Environmental Science in our department, and there are about 150 majors. At the graduate level, interest in our program greatly exceeds our capacity: currently we have about 50 M.S. students, the significant majority are funded.

Enrollment in undergraduate courses remains robust and enrollment at the graduate level is growing..”

Georgia Institute of Technology: “We don't offer a Geography major. We offer a technology focused graduate level GIS degree. Our geography education is anchored in GIS at the School of City and Regional Planning graduate program. We do experience some turf wars between our newly introduced Urban Analytics degree program and GIS as both programs target the same prospective students. We are at the cutting edge with respect to technology and it is not an issue. Our graduate program comprises a mix of domestic and international students. Outreach and additional budget will be needed to grow the program.”

University of West Georgia: “We had record high graduates (BS in Geography) and high course enrollments in 2019. Like many programs outside of a small handful at UWG, we have experienced decline. Last spring our provost recommended that Geography and Geology combine, with both of programs currently considered "low-productivity" programs. He presented this as an immediate survival strategy. Thus, we are in the process of proposing a new major in Earth and Environmental Science that will feature concentrations in Environmental Sustainability, GIS, and Professional Geology.”

University of North Georgia: “Our institute is a combination of geography, geology, environmental science, environmental studies, and environmental engineering. Our geography offerings are mostly at the introductory level with some specialized upper-level classes (e.g., geomorphology and geography of eastern Asia). Our institute's specialization is GIS. We offer introductory, upper-level, and some graduate offerings for GIS and geospatial data science. Expansion of geography and our other offerings is constrained by budget and enrollment.”

H. State of SEDAAG

Reporting programs in the state of Georgia have solid involvement in SEDAAG have an overall positive view regarding the State of SEDAAG. Programs commend SEDAAG on their efforts to support undergraduate research and participation, networking opportunities, and overall positive

conference experience. Finally, several programs noted the continued quality of the *Southeastern Geographer* (e.g., Georgia State University & University of West Georgia).

A few suggestions include: 1) increased student support 2) department or program mentoring award, and 3) flexible meeting dates.

Each department's complete response is quoted below:

Georgia College & State University: "I think SEDAAG is doing great as an organization. We've got a great journal that is respected. The meetings are enjoyable for students and faculty. We could improve/centralize communication about meetings, session/poster approvals, etc., which often come late and discourage our students from applying for on campus funding. In the past few years, we've had two students who did not know that their posters had been approved until the detailed program came out, and by then it was too late to apply for student research funding on campus."

Georgia Gwinnett College: SEDAAG is wonderful. Although I cannot go this year, I usually do. We, as a collective at GGC, really love the collegiality.

Kennesaw State University: "I don't have any suggestions of anything that could be improved upon."

Georgia Southern University: "SEDAAG is great, we have had lots of success with student experience and presentations. We remain committed to having students represented and attend SEDAAG especially as travel to national (international) conferences is becoming increasingly difficult to fund. We would love to see SEDAAG offer more student support to continue these efforts."

Georgia State University: "SEDAAG seems to be becoming more relevant as travel budgets are cut and higher ed restructures. It would be ideal if the timing of the annual meeting could shift away from the Thanksgiving week, which is a holiday for many faculty members"

University of West Georgia: "I have appreciated the journal under the past 3-4 editorships. Keep up the great work! I still don't like the timing of the meeting (weekend before Thanksgiving)."

University of North Georgia: "SEDAAG is (and has always been) a great outlet for all levels of research (from undergraduate all the way up to professorial research). The only thing that I can think that would help undergraduate involvement is to provide more travel award opportunities."

Suggestions relate to survey solicitation: I have two primary suggestions: 1) The current survey is missing minors and certificates unless folks write this in "other." I suggest adding a box for minors, certificates and an option to write in exactly what those are. 2) Compared to last year's "manual" survey, I believe a lot of nuance was missed through the checking of boxes, less detailed responses.

9.d. Kentucky SEDAAG Survey Summary: 2024-2025 Academic
 Prepared by Bethany Craig, PhD student at The University of Kentucky

A. Institutional Information

Approximately 11 universities in Kentucky offer courses and/or degrees in geography or geography related fields. Three of these universities responded to the 2024 SEDAAG state of the field survey. The survey contacts and program details for these 3 programs are summarized below:

Table 1. Universities Responding to the 2023-2024 SEDAAG Survey

Institution	Department and Survey Contact	Geography Degrees Offered
Morehead State University	<ul style="list-style-type: none"> • Department of History, Philosophy, Politics, Global and Legal Studies • Dr. HPPGL-James R. Masterson 	No geography degree
Northern Kentucky University	<ul style="list-style-type: none"> • Department of History • Dr. Carol Medlicott 	No geography degree
The University of Kentucky	<ul style="list-style-type: none"> • Dr. Matthew Wilson 	<ul style="list-style-type: none"> • B.S. in Geography • B.A. in Geography • Minor in Geography • Minor in Mapping and GIS • Minor in Urban Studies • Minor in Environment and Sustainability Studies • Certificate in Digital Mapping • Certificate in Applied Environmental and Sustainability Studies • M.A. in Geography • M.A. in Applied Environmental and Sustainability Studies • M.S. in Digital Mapping • Ph.D. in Geography

B. Trends in Student Enrollment in Geography Courses

Enrollment in **undergraduate** geography courses is *stable* at Morehead State University, *declining* at Northern Kentucky University, and *increasing* at The University of Kentucky.

There are no **graduate** geography courses at Morehead State University or Northern Kentucky University. Graduate student enrollment at The University of Kentucky is *stable*.

C. Trends in Geography Majors and Minors

Northern Kentucky University and Morehead State University do not offer any **undergraduate** geography majors; and are *stable* at The University of Kentucky. The number of **undergraduate** geography minors at Morehead State University is *declining* with currently less than 10 students.

There are no **graduate** geography majors at Northern Kentucky University or Morehead State University; and they are *stable* at The University of Kentucky.

D. Trends in Course Offerings

Morehead State University's course offerings are *increasing* for environmental geography, stable for overall undergraduate general education and human geography, and are *declining* for physical geography, GIS, and geospatial technologies. Northern Kentucky University's course offerings are *declining* in every geographic subfield but remain *stable* for overall undergraduate general education. The University of Kentucky's course offerings are *increasing* in overall undergraduate general education, quantity of courses, GIS, Geospatial Technologies, and environmental geography; *declining* in graduate course levels; and are *stable* in human and physical geography.

E. Jobs for Geography Graduates

Morehead State University reported that the question of job placement was not applicable for their program. Northern Kentucky University has placed students in park/recreation jobs, conservation, and public health. The University of Kentucky did not report on this question.

F. Personnel

Table 2. Personnel

University	Department Head	Full-Time Geography Faculty	Part-Time Geography Faculty	New Geography Faculty
Morehead State University	Dr. James R. Masterson	2	0	0
Northern Kentucky University	"No program now, and the Department is now solely the Department of History, whereas up until about 2 years ago, we were Department of History and Geography."	0	4	0

The University of Kentucky	Dr. Matthew Wilson	20	0	Dr Alicia Barceinas Cruz and Dr Sopheak Chann; no news about hiring
----------------------------	--------------------	----	---	---

G. State of Geography

Morehead State University did not respond to this question; however, the rest of the survey would indicate their department remains relatively small and stable. Northern Kentucky University articulated the challenges of the geography program being cut and many of their GIS/geospatial course offerings being moved to the College of Informatics and out of Arts & Sciences. The program was not able to offer competitive salaries in the region and in-demand skills like GIS were not prioritized by administration. The University of Kentucky express challenges to higher education in the state but feels confident in the institution's position for impact and interdisciplinary nature.

Each department's complete response is quoted below:

Morehead State University: not applicable

Northern Kentucky University: "The administration at my institution began strenuous efforts to eliminate geography about 20 years ago, as I was arriving to take up my tenure-track job. The geography program was actively being chopped in half, with the GIS/geospatial courses going over to the newly established College of Informatics and the physical/environmental/humanistic geography remaining in Arts & Sciences. In the College of Informatics, the GIS program did not receive robust support. The faculty member hired to teach GIS was tenured in Computer Science, not in Geography, and their teaching load was divided between C.S. and Geography. Meanwhile, on the Arts & Sciences side we were unable to attract new faculty to teach GIS b/c the salary level was not as high as at comparable schools, and not as high as faculty get at my institution in the College of Informatics. Even though GIS-related jobs in our region were growing fast, the institution was not focusing on GIS opportunities in recruitment fairs. My own opinion is that certain persons in upper administration harbored some personal animus towards long-time geography faculty, and this played a role in what appeared to be very active efforts to "kill" geography. My MA & PhD are from one of the finest geography programs in the US, or indeed in North America, and I arrived at NKU with a strong publication record. I have consistently been demoralized at the treatment of geography at my institution. It is disrespected by some in administration, it is disrespected by many faculty in Arts and Sciences, though they love using the all the trendy "buzz words" from geography -- "mapping," "navigating," "landscape," "contested terrain," etc."

The University of Kentucky: "While there are undoubtedly challenges for higher education in the Commonwealth of Kentucky, I feel that UK Geography is well-positioned to make impacts. We are building a new undergraduate program in Mapping & GIScience, and continue to administer the growing interdisciplinary undergraduate program in Environmental & Sustainability Studies. We are also doubling the capacity of our computer-supported GIS teaching labs."

H. State of SEDAAG

Morehead State University did not respond to this direct question, leaving only Northern Kentucky University and The University of Kentucky as definitive data points. **Each department's complete response is quoted below:**

Morehead State University: not applicable

Northern Kentucky University: "I have admired the vitality of SEDAAG, historically. However, as tenured geography faculty on a Kentucky campus, I do feel that Kentucky does not quite "fit" in SEDAAG's target region. Kentucky bears little in common with most of the region. But admittedly, the Lakes Division would not be a logical fit, either. The awkward fit of Kentucky into SEDAAG has held me back from submitting work for potential publication in the journal. It has also held me back from encouraging student involvement."

The University of Kentucky: "We look forward to hosting SEDAAG 2025 in Lexington!"

9.e. Mississippi SEDAAG Survey Summary: 2024-2025 Academic Year

In the state of Mississippi there are 15 institutions of higher learning. Eight of those are public with two offering degrees in Geography: Mississippi State University and the University of Southern Mississippi. Only Mississippi University for Women offers a minor in Geography while G.I.S./G.I.T. degrees are offered at Mississippi State, University of Southern Mississippi, Delta State University, and Alcorn State University.

Institution	Department/Contact	Geography Degrees Offered	Faculty	New Faculty/Positions
Alcorn State University	Samuel Nwaneri-Agriculture snwaneri@alcorn.edu	None	1 shared across other disciplines	None
Delta State University	Chris Smith- GIT cdsmith@deltastate.edu	None	2 in GIT	None
Jackson State University	John Proctor-History and Philosophy usmplanner@yahoo.com	None	1 Lecturer	None
Mississippi State University	Brian Williams-Department of Geosciences bsw63@msstate.edu	B.S. in Geosciences with a concentration in Geology, Geography, Environmental Geosciences, Broadcast Meteorology, Professional Meteorology, and GIS. Minors in Geospatial and Remote Sensing. M.S. in Meteorology, Geospatial Sciences, Environmental Geosciences, Geology, and Geography.	3 full-time geography instructors solely dedicated to the field, difficult to officially count others due to administrative roles and limited course loads, net loss of several faculty over the previous year	No new hires from the previous year. Hiring two positions in the forthcoming year: one a tenure-track GIS faculty to replace a departure. Additionally hiring a full-time World Regional Geography instructor.

		Ph.D. in Earth and Atmospheric Sciences		
--	--	--	--	--

Mississippi University for Women	Ann Fletchall- History and Political Sciences amfletchall@muw.edu	Minor only	1 Lecturer	None
Mississippi Valley State University	Richard Mushi- Social Sciences rjmushi@mvsu.edu	None	1 Lecturer	None
University of Mississippi	David Rutherford- Teacher Education druther@olemiss.edu	None	3 shared with other departments	None
University of Southern Mississippi	George Raber- Geography Coordinator: george.raber@usm.edu	GIS/GIT Certificate or Badge Remote Sensing Badge B.S. in Geography M.S. in Geography	7 total	No new hires for this year.

B. Enrollment Trends

Enrollment in geography courses in Mississippi is generally stable with a slight decline noticed at schools that do not have a major or minor in Geography. Over the past five years programs have identified a general decline in enrollment, which has been attributed to COVID and the post-COVID job market available. However, schools have noticed in the past three years stability in enrollment with a slight increase in graduate enrollment in Master’s programs. Schools that have a geography major have observed stability in course enrollments with a semblance of increase. Draconian cuts at one state-supported institution have shaken confidence at many state-funded institutions and led to cross-system belt-tightening.

Smaller colleges typically offer an introductory course in World Regional Geography through an adjunct or instructor that is shared with other disciplines. Those enrollments have stabilized

since 2020 with larger institutions experiencing increases in enrollment in general as well as enrollment in introductory geography courses.

C. Trends in Majors

Enrollments in geography majors have been stable with a slight increase at the institutions that grant geography degrees. Graduate enrollment at Mississippi State has increased significantly over the past year.

D. Course Offerings

No new course offerings are of note in Mississippi as almost every college and university offers at least an introductory World Regional Geography course. Only Mississippi Valley, Delta State, Alcorn State, Jackson State, and the University of Mississippi offer additional courses with Delta State and Alcorn State focusing on GIT/GIS. Mississippi University for Women maintains a minor in Geography with a few courses in regional studies. Southern Mississippi and Mississippi State continue to lead the state with the most varied and diverse course offerings. The offerings at these two institutions have experienced growth in GIS, environmental studies, and human geography.

E. Jobs and Job Placement

Job placement has been great for both Mississippi State and Southern Mississippi as GIT/GIS has been a growing field of interests across industries. Placements have been active in public and private sector jobs, but particularly in public sector job placement related to GIS. Southern Mississippi has continued its success with training and placing employees at the NASA Stennis Space Center with specialties in remote sensing and GIS.

F. Faculty Searches

Mississippi State University will be looking for a GIS/Geography tenure track position in the coming year. Additionally, Mississippi State will also be seeking an additional instructor to teach introductory level courses in the coming year. Other schools that teach geography courses either share faculty across fields like history or education or hire adjuncts to teach one or two courses for the institution.

G. State of Geography

Geography in the state of Mississippi is still viewed as valuable for its utility, especially in relation to UAVs, land management, agriculture, and planning. There is a need to improve the visibility of the discipline as a holistic discipline and not only as a set of skills. The application of spatial understanding should be valued more than it is. Additionally, one way to help in this awareness is by providing better bridges to support geography at our HBCUs. SEDAAG and AAG could assist in this goal by providing more encouragement and publicity.

Some respondents state that geography appears to be fracturing into fields of sustainability and/or GIS leaving human and cultural geography to wither. Outside funding in the field of sustainability helps it grow. The utility of GIS in other fields like biology and political science continue to keep it well supplied with students.

Mississippi also has its own annual Mississippi Geospatial Conference that brings together people in the state who share an interest in geography. The conference is now in its eleventh year with about 125 attendees present annually.

H. State of SEDAAG/AAG

SEDAAG still maintains a place of esteem for those in the state who are aware of it. One stated that, "SEDAAG is the best conference. It is small enough to be manageable and talk to experts from all over the region but still large enough to cover a wide array of topics." The dates are viewed as convenient and the locations are feasible.

The perception of AAG has improved recently. It was unwieldy for a while but has now found easier methods to connect. The webinars that are provided by AAG are helpful.

9.f. North Carolina SEDAAG Survey Summary: 2024-2025 Academic Year

Surveys solicited by Dr. Mark Sciuchetti, Associate Professor of Geography at Jacksonville State University, Jacksonville, Alabama

Summary prepared by Dr. Derek J. Martin, Associate Professor at Appalachian State University

A. Institutional Information

Approximately 14 universities in North Carolina offer courses and/or degrees in geography or related fields. Four of these universities responded to the 2023-2024 SEDAAG Survey.

Table 1. Universities Responding to the 2023-2024 SEDAAG Survey

Institution	Department and Survey Contact	Degrees Offered
Appalachian State University	<ul style="list-style-type: none"> • Department of Geography and Planning • Dr. Saskia van de Gevel 	<ul style="list-style-type: none"> • B.A. in Geography • B.S. in Geography, General • B.S. in Geography w GIS Concentration • B.S. in Community & Regional Planning • Undergraduate GIS Certificate • M.A. in Geography <ul style="list-style-type: none"> ○ Conc. in General Geography ○ Conc. in GIScience ○ Conc. in Planning ○ Conc. in Climate Change • Graduate Certificate in GIScience • Graduate Certificate in Planning • Graduate Certificate in Climate Change
University of North Carolina, Pembroke	<ul style="list-style-type: none"> • Department of Geology and Geography • Dr. Dennis Edgell 	<ul style="list-style-type: none"> • B.S. in Geo-Environmental studies <ul style="list-style-type: none"> ○ Conc. in Geography
University of North Carolina, Charlotte	<ul style="list-style-type: none"> • Department of Earth, Environmental and Geographical Sciences • Dr. Sara Gagné 	<ul style="list-style-type: none"> • B.S. in Earth and Environmental Sciences • B.S. in Geography • B.S. in Geology • B.S. in Meteorology • B.A. in Environmental Studies, Secondary Teaching option • B.A. in Geography, Comprehensive Social Studies Teacher Licensure, • Minor in Earth and Environment • Minor in Geography • Minor in Geology • Minor in Urban Studies • M.S. in Earth Science • M.A. in Geography • Graduate Certificate GIS&T • Ph.D. in Geography • Ph.D. in Infrastructure & Env. Systems • Ph.D. in Public Policy
University of North Carolina, Greensboro	<ul style="list-style-type: none"> • Department of Geography, Environment, and Sustainability • Dr. Dan Royall 	<ul style="list-style-type: none"> • B.A. in Geography • B.S. in Geography • B.A. in Environmental and Sustainability Studies • Ph.D. in Geography • Post-Baccalaureate Certificates <ul style="list-style-type: none"> ○ Conservations ○ Global Societies and Governance ○ Sustainability ○ Urban and Economic Development

B. Trends in Student Enrollment in Geography Courses

Enrollment in **undergraduate** geography courses has *increased* at ASU. ASU reports increase in enrollment following inclusion of numerous courses in General Education requirements. Enrollment has been reported as *stable* at UNC-P, UNC-G, and UNC-C. Enrollment in **graduate** geography courses is *stable* at ASU, UNC-G, and UNC-P, and is reported as *declining* at UNC-C.

C. Trends in Geography Majors

The number of **undergraduate** geography majors is *increasing* at ASU, *stable* at UNC-P and UNC-C, and *declining* at UNC-G. The number of students in **graduate** geography programs is reported as *stable* at ASU, UNC-P, and UNC-G, and as *Declining* at UNC-C.

D. Trends in Course Offerings

All schools report increases in Gen-Ed course offerings. ASU and UNC-P report increases in GIS course offerings, while UNC-C is the only school that reports an increase in Human Geography course offerings. Graduate course offerings are reported as *stable* at all schools with the exception of UNC-C, which reported a *decline* in graduate course offerings. Physical or Environmental courses were reported as *stable or increasing* at all institutions.

E. Jobs for Geography Graduates

All departments have reported high levels of success with graduates finding jobs. Particularly, all have reported that graduates are finding jobs in GIS fields across the private/non-profit/local-state-federal government sectors as well as Planning. ASU reports that nearly 100% of graduates with a Planning focus find jobs within six months of graduation, citing a shortage of Planners in the state of NC as the reason. Additionally UNCG reports success in the area of Water Resources.

F. Personnel

Table 2. Personnel

University	Department Head	Full-Time Geography Faculty	Part-Time Geography Faculty	New Geography Faculty
Appalachian State University	Dr. Saskia van de Gevel	16	4	<ul style="list-style-type: none"> • 2 new hires Fall 2024 • 2 Upcoming hires
University of North Carolina - Pembroke	Dr. Martin Farley	3(+3 Geol.)	0	<ul style="list-style-type: none"> • 0
University of North Carolina - Greensboro	Dr. Dan Royall	12	0	<ul style="list-style-type: none"> • 1 in 2024
University of North Carolina - Charlotte	Dr. Sara Gagné	13	0	<ul style="list-style-type: none"> • 1 new hire Fall 2024. • 1 Upcoming

G. State of Geography

The State of Geography is generally viewed as positive and/or stable by those reporting, and cite GIS and tech-based course offerings as the reason for such stability and appreciation by their respective administrations, and by the state in general. ASU reports stable financial support by their college and alumni. However vigilance in warding off potential threats to the state of Geography in NC has been advised. **Each department's complete response is quoted below:**

Appalachian State University: “Our goals this year = Department Goals Support the development and GAP&P proposal of an online graduate GIScience certificate program for students to learn at their own pace across a 15-week online program, earning a university certification upon completion (4 courses total; 2 courses each semester). The online GIS/GIScience certification is widely marketable across disciplines with the goal of helping students learn to use GIS/GIScience responsibly within their own discipline, and providing the flexibility to do so, in addition to their other employment and school responsibilities. In a survey of GIS/GIScience certificate programs across the U.S., coordinators described faculty as the limiting resource most critical to the success of the certificate (Wikle and Sinton 2020). Our NEW faculty hire, Dr. Yao, will oversee the online GIS/GIScience certification program providing much-needed administrative support and additional online course offerings. Dr. Yao will be responsible for program development, program assessment, and course coordination. Department Goals Create an NTT undergrad program coordinator and instructor position that includes outreach to K-12 schools. This position would help with advising teach introductory science inquiry classes (GHY 1011 and GHY 1012) and GIS courses and lab sections (GHY 3812) to avoid waitlists and support PKH and other online teaching opportunities.”

University of North Carolina - Pembroke: “Supposedly, there are plenty of jobs for geography graduates.”

University of North Carolina - Charlotte: “I think we are in a relatively good position because our geography faculty are members of a large interdisciplinary department and are highly collaborative. However, our geography undergrad majors are at risk of being eclipsed by our very rapidly growing Earth and Environmental Sciences BS program. It takes purposeful intent to find balance in the department on multiple fronts (hiring, student recruitment, etc.).”

University of North Carolina - Greensboro: “I don't have a great feel for the state of geography in the state, but I continue to worry that others may find their programs under scrutiny because the UNC System is moving towards an academic portfolio review process similar to the one that hit UNCG hard last year; expanded to all universities in the system. Here at UNCG we are holding steady in UG majors, but with numbers reduced relative to 5 years ago. The MA in Applied Geography was cut last year in the UNCG portfolio review. The program had numbers not so different from those of some other MA programs at UNCG that were not cut, and that may have some relevance to other geography programs in the state; is geography, a discipline few outsiders understand, an easy target? This question is very familiar to geographers all over and for many years. Yet UNCG and the department are different from some other institutions in significant ways (demographics, very large FTIC population, huge and growing proportions of transfer students, especially from community colleges). An interdisciplinary liberal studies program in Environmental Studies was merged into the department in 2018, and has a relatively

new all online MS in Sustainability and Environment. The good news is that we have retained all of our normal funding for graduate assistants, and are maintaining strong numbers and vitality in the PhD program. We have recently made revisions to our PhD program that permit highly qualified and accomplished students without a master's degree to enter the PhD program directly with very little increase in credit hours to graduation. So we're still doing very well in many areas, have lost substantially in others, and we are carefully watching what is happening at the System level and at our institution. We have a number of very strongly enrolled general education courses, particularly in Earth sciences, and we contribute a huge chunk of student credit hours to the College. UNCG grew in enrollment this past year and hopefully will continue to grow back towards its numbers at the start of the Covid pandemic.”

H. State of SEDAAG

Based on responses from two of the four institutions, SEDAAG is held in high regard. However, ASU reports declining participation from faculty and students (Observation added by State Rep – Martin). UNC Pembroke acknowledges the great opportunities afforded to students, but would like to see better refreshment offerings. **Each department’s complete response is quoted below:**

Appalachian State University: “We changed our BS Geography and GIS Certificate CIP codes this year to a STEM code (as suggested by AAG) and I recommend all SE Geography programs complete this process at their state levels (for public universities).”

University of North Carolina - Pembroke: “SEDAAG is a great opportunity for students. I always enjoy the poster sessions and the World Geography Bowl. The amount of food and refreshments for the sessions and events has not been very good. I hate to see graduate students starve.”

University of North Carolina – Charlotte: NA

University of North Carolina, Greensboro: NA

**9.g. South Carolina SEDAAG Survey Summary: 2024-2025 Academic Year
2024 SEDAAG**

Submitted by Dr. Jerry Mitchell, University of South Carolina

Institutional Information

Seven post-secondary institutions in South Carolina offer at least a Minor or A.A. degree in Geography. Two more offer certificates in geospatial technology. Only two institutions offer a B.A. or B.S. degree, and only one offers graduate degrees. These are reported in Table 1.

There are introductory geography courses offered at other institutions such as Greenville Technical College, Horry Georgetown Technical College, Trident Technical College, and the University of South Carolina – Aiken. Florence-Darlington Technical College has offered a GIS Certificate in Applied Science.

Table 1. Universities in the 2023-2024 SEDAAG Report (degrees hyperlinked)

Institution	Contact	Degrees Offered
Clemson University	Department of History and Geography Dr. William Terry, terry2@clemson.edu	<u>Minor in Geography</u>
Coastal Carolina University	Department of Anthropology and Geography Dr. Clayton Whitesides cwhitesid@coastal.edu	<u>B.A. in Anthropology and Geography with a concentration in Geography</u> <u>Minor in GIS</u> <u>Minor in Human-Environment Geography</u> <u>Geospatial Technologies Certificate</u>
College of Charleston	Department of Political Science Dr. Annette Watson WatsonAM@cofc.edu	<u>Minor in Geography</u>
Francis Marion University	Department of Political Science and Geography Dr. Scott Brown ssbrown@fmarion.edu	<u>Minor in Geography</u>

Midlands Technical College	School of Social and Behavioral Sciences Dr. Brian Grabbatin grabbatinb@midlandstech.edu	<u>A.A. with a concentration in Geography</u>
University of South Carolina – Columbia	Department of Geography Dr. Jerry Mitchell mitchell@sc.edu	<u>B.A. in Geography</u> <u>B.S. in Geography</u> <u>Geospatial Intelligence Certificate</u> <u>Minor in Climate and Society</u> <u>Minor in Geography</u> <u>M.A. in Geography</u> <u>M.S. in Geography</u> <u>Ph.D. in Geography</u>
Winthrop University	Department of Chemistry, Physics, Geology & the Environment Dr. Robin Lammi lammir@winthrop.edu	<u>Minor in Geography</u>

Geography Courses / Student Trends

Trends in Student Enrollment in Geography Courses

Enrollment in undergraduate courses appears stable at most institutions. Coastal Carolina University reports continued demand for geospatial technology courses from students outside the department. Likewise, the College of Charleston notes that they continue to contribute to other program such as Environmental/Sustainability Studies. Serving other degree programs on campus was also reported by the University of South Carolina – Columbia (environmental studies, global studies, College of Education).

Trends in Geography Majors

Only two institutions have geography majors. Coastal Carolina University and the University of South Carolina – Columbia report that major levels are stable, but that there is competition from other majors that dilute strengths and divert resources (sustainability and global studies degrees, respectively). Programs with minors and certificates (College of Charleston, Coastal Carolina

University) report stable enrollment and modest growth.

Trends in Course Offerings

Coastal Carolina University reports continued strength in geospatial technology and physical geography courses. Clemson University hopes to grow this same area with its recent Lecturer hire in this space. The University of South Carolina – Columbia has added new courses in medical geography and GIS for public health as well as reviving courses in Transportation Geography (both due to recent hires).

Jobs for Geography Graduates

The University of South Carolina - Columbia reports graduates going into government (planning; environment; GIS), NGOs (human rights; energy); and private companies (GIS; remote sensing)". Francis Marion University reports students attending law school or working in urban planning and GIS, while Midlands Technical College reports that many students go on to four-year colleges entering into degree programs such as Geography, Environmental Studies, International Studies, or Environmental Science. Coastal Carolina University reports student employment in local government, private industry, and NGOs, or continuing on to graduate school.

Personnel

Clemson University – the program has two full-time, tenure-track faculty and hired a lecturer in 2024 to teach physical geography courses and GIS.

Coastal Carolina University – six full-time and 1 part-time faculty.

College of Charleston – two full-time faculty.

Francis Marion University – two full-time and 1 part-time faculty.

Midlands Technical College – one full-time and 1 part-time faculty.

University of South Carolina – Columbia – the program has 18 full-time, tenure-track faculty, two full-time instructors, two adjunct faculty, and one Research Assistant Professor. The RAP and an Assistant Professor in medical geography were both hired for Fall 2024. Two retirements are expected for May 2025.

Winthrop University – one full-time and 1 part-time faculty

State of Geography

The State of Geography in South Carolina is steady. Geospatial technology courses are strong and show potential for growth. Competition remains for resources and students with the development of similar programs (environmental studies, global studies) in other university units. A continued challenge is the difficulty in educating students, faculty, and staff about what makes geography distinct. These concerns aside, the general tenor is positive.

State of SEDAAG

As reported in previous years, there is concern about having the annual meeting so close to Thanksgiving and a need for SEDAAG leadership to focus on early-career faculty to develop the next generation of leadership in the Division.

9.h. Tennessee SEDAAG Survey Summary: 2024-2025 Academic Year

Surveys solicited and report prepared by:
Craig R. Laing, University of Tennessee at Chattanooga

A. Institutional Information

At least nine universities in Tennessee offer courses and/or degrees in geography or related fields. The survey link was sent to all nine institutions. Six of these institutions completed the survey. The contacts and degree information for these six departments are summarized in the table below:

Table 1. Universities Responding to the 2024 SEDAAG Survey

Institution	Department and Survey Contact	Geography Degrees Awarded
Austin Peay State University	Earth and Environmental Sciences Dr. Christopher Gentry	<ul style="list-style-type: none"> Undergraduate degree
Tennessee Technological University	Earth Sciences Dr. Lauren Michel	<ul style="list-style-type: none"> No geography degree (degrees are in geosciences)
University of Memphis	Earth Sciences Dr. Arleen A. Hill	<ul style="list-style-type: none"> Undergraduate degree Masters degree Doctoral degree
University of Tennessee at Chattanooga	Social, Cultural, and Justice Studies Dr. Craig R. Laing	<ul style="list-style-type: none"> No geography degree (minor in geography)
University of Tennessee at Knoxville	Geography and Sustainability Dr. Ronald Kalafsky	<ul style="list-style-type: none"> Undergraduate degree Masters degree Doctoral degree
University of Tennessee at Martin	Agricultural, Geosciences, and Natural Resources Dr. Thomas DePriest	<ul style="list-style-type: none"> Undergraduate degree

B. Trends in Student Enrollment in Geography Courses

Austin Peay State University: Undergraduate courses: **stable**; Graduate courses: **not applicable**.
Comments: We have seen slight growth in student credit hours among our 1000-level courses but declining credit hours in upper division courses, partially due to graduations, so the overall trend has been relatively flat.

Tennessee Technological University: Undergraduate courses: **growing**; Graduate courses: **stable**.
Comments: Our overall enrollment numbers are up for undergraduate classes, and our gen eds have grown in the past 3 years. We do not have a geography degree but a geography concentration housed within our Geosciences degree. This year our numbers are up in our graduate geography courses, but they have been hovering for the 3 years prior.

University of Memphis: Undergraduate courses: **declining**; Graduate courses: **stable**.
Comments: Enrollments on campus have declined, our undergraduate enrollment mirror that trend. Graduate enrollment are stable or growing (techniques courses growing).

University of Tennessee at Chattanooga: Undergraduate courses: **growing**; Graduate courses: **not applicable**.
Comments: Enrollment in undergraduate geography courses is growing and now exceeds pre-pandemic levels. Currently, we are seeing about 400 students enrolled in geography courses in fall semesters and about 300 in spring semesters. We do not have graduate courses in geography.

University of Tennessee at Knoxville: Undergraduate courses: **growing**; Graduate courses: **growing**.

University of Tennessee at Martin: Undergraduate courses: **stable**; Graduate courses: **not applicable**.

C. Trends in Geography Majors

Austin Peay State University: Undergraduate: **stable**; Graduate: **not applicable**.
Comment: We have seen growth in the number of majors from previous years, but the recent graduations have made the overall growth relatively flat

Tennessee Technological University: Undergraduate: **stable**; Graduate: **not applicable**.
Comment: The number of students in the geography concentration has been stable over the past decade. There is a professional science masters in a different college that houses a PSM in Environmental Informatics. These students take a number of graduate geography classes and sometimes pursue research in geography. This program has grown in the past decade.

University of Memphis: Undergraduate: **stable**; Graduate: **stable**.
Comment: Graduate GIS growing, other areas are stable.

University of Tennessee at Chattanooga: Undergraduate (minors): **growing**; Graduate: **not applicable**.
Comment: We do not have a geography major, but, we have about twenty minors and that number is slowly growing.

University of Tennessee at Knoxville: Undergraduate: **growing**; Graduate: **growing**.

University of Tennessee at Martin: Undergraduate: **stable**; Graduate: **not applicable**.

University of Tennessee at Chattanooga:

What is the trend in course offerings in geography at your institution?

	Overall Quantity of Courses	Course Levels: Undergraduate	Course Levels: Graduate	General Education Courses:	Trends in Specific Subfields: Human Geography	Trends in Specific Subfields: Physical Geography	Trends in Specific Subfields: GIS and Geospatial Technologies	Trends in Specific Subfields: Environmental Geography
Increasing	<input type="checkbox"/>	<input type="checkbox"/>	<input type="checkbox"/>	<input type="checkbox"/>	<input type="checkbox"/>	<input checked="" type="checkbox"/>	<input type="checkbox"/>	<input type="checkbox"/>
Decreasing	<input type="checkbox"/>	<input type="checkbox"/>	<input type="checkbox"/>	<input type="checkbox"/>	<input type="checkbox"/>	<input type="checkbox"/>	<input type="checkbox"/>	<input type="checkbox"/>
Stable	<input checked="" type="checkbox"/>	<input checked="" type="checkbox"/>	<input type="checkbox"/>	<input checked="" type="checkbox"/>	<input checked="" type="checkbox"/>	<input type="checkbox"/>	<input checked="" type="checkbox"/>	<input checked="" type="checkbox"/>
Not applicable	<input type="checkbox"/>	<input type="checkbox"/>	<input checked="" type="checkbox"/>	<input type="checkbox"/>	<input type="checkbox"/>	<input type="checkbox"/>	<input type="checkbox"/>	<input type="checkbox"/>

University of Tennessee at Knoxville:

What is the trend in course offerings in geography at your institution?

	Overall Quantity of Courses	Course Levels: Undergraduate	Course Levels: Graduate	General Education Courses:	Trends in Specific Subfields: Human Geography	Trends in Specific Subfields: Physical Geography	Trends in Specific Subfields: GIS and Geospatial Technologies	Trends in Specific Subfields: Environmental Geography
Increasing	<input checked="" type="checkbox"/>	<input checked="" type="checkbox"/>	<input checked="" type="checkbox"/>	<input checked="" type="checkbox"/>	<input checked="" type="checkbox"/>	<input checked="" type="checkbox"/>	<input checked="" type="checkbox"/>	<input checked="" type="checkbox"/>
Decreasing	<input type="checkbox"/>	<input type="checkbox"/>	<input type="checkbox"/>	<input type="checkbox"/>	<input type="checkbox"/>	<input type="checkbox"/>	<input type="checkbox"/>	<input type="checkbox"/>
Stable	<input type="checkbox"/>	<input type="checkbox"/>	<input type="checkbox"/>	<input type="checkbox"/>	<input type="checkbox"/>	<input type="checkbox"/>	<input type="checkbox"/>	<input type="checkbox"/>
Not applicable	<input type="checkbox"/>	<input type="checkbox"/>	<input type="checkbox"/>	<input type="checkbox"/>	<input type="checkbox"/>	<input type="checkbox"/>	<input type="checkbox"/>	<input type="checkbox"/>

University of Tennessee at Martin:

What is the trend in course offerings in geography at your institution?

	Overall Quantity of Courses	Course Levels: Undergraduate	Course Levels: Graduate	General Education Courses:	Trends in Specific Subfields: Human Geography	Trends in Specific Subfields: Physical Geography	Trends in Specific Subfields: GIS and Geospatial Technologies	Trends in Specific Subfields: Environmental Geography
Increasing	<input type="checkbox"/>	<input type="checkbox"/>	<input type="checkbox"/>	<input checked="" type="checkbox"/>	<input type="checkbox"/>	<input type="checkbox"/>	<input checked="" type="checkbox"/>	<input type="checkbox"/>
Decreasing	<input type="checkbox"/>	<input type="checkbox"/>	<input type="checkbox"/>	<input type="checkbox"/>	<input type="checkbox"/>	<input type="checkbox"/>	<input type="checkbox"/>	<input type="checkbox"/>
Stable	<input checked="" type="checkbox"/>	<input checked="" type="checkbox"/>	<input type="checkbox"/>	<input type="checkbox"/>	<input checked="" type="checkbox"/>	<input checked="" type="checkbox"/>	<input type="checkbox"/>	<input type="checkbox"/>
Not applicable	<input type="checkbox"/>	<input type="checkbox"/>	<input checked="" type="checkbox"/>	<input type="checkbox"/>	<input type="checkbox"/>	<input type="checkbox"/>	<input type="checkbox"/>	<input checked="" type="checkbox"/>

E. Jobs for Geography Graduates

Austin Peay State University: Most of our recent graduates have found positions in consulting, GIS, data science, or employment with federal agencies.

Tennessee Technological University: Most of our students in the geography concentration are getting jobs using GIS.

University of Memphis: Local/state/fed government, utilities, consulting with GIS firms.

University of Tennessee at Chattanooga: We do not have a geography major.

University of Tennessee at Knoxville: Widely varies, depending on specialty.

University of Tennessee at Martin: Most of our geographers are in our meteorology program and are employed in that field.

F. Geography Faculty

Table 2. Geography Faculty

University	Department Head	Full-Time Geography Faculty	Part-Time Geography Faculty	New Geography Faculty
Austin Peay State University	Dr. Christopher Gentry	4	1	none
Tennessee Technological University	Dr. Jeanette Luna	4	1	none
University of Memphis	Dr. Arleen Hill	7	0	Hire postponed due to budget scenario
University of Tennessee at Chattanooga	Dr. Zibin Guo	2	2	None
University of Tennessee at Knoxville	Dr. Ron Kalafsky	21	0	Dr. Anna Marshall; Dr. Jack Swab; we will be hiring in the upcoming academic year
University of Tennessee at Martin	Dr. Wes Totten	3	2	We will be adding someone to help teach meteorology starting in the spring

G. State of Geography (at your institution and state)

Austin Peay State University: Because of the lack of geography curriculum in K-12 in TN many students do not understand the many options within the discipline. We are doing as much outreach as possible to promote the concentration both on and off campus. We also changed the department name to Earth and Environmental Sciences to try and reach incoming students in a vernacular they might better comprehend. We have seen a recent rise in majors however, we have both geography and geology concentrations in the department and the majority of those new majors are in the geology concentration. Currently we are about 60% geology and 40% geography.

Tennessee Technological University: Jobs and majors using GIS seems to be growing in our department. Our budget and curriculum has held steady. See previous comments for more detailed analysis of the state of the geography concentration.

University of Memphis: The University is working through budget constraints, raising graduate stipends, and lower total enrollment. Ties with other units on campus are strong and cross training in spatial analysis, statistics, and GIS/RS continues to be a strength. Many changes in administration combined with budget constraints are difficult to cope with.

University of Tennessee at Chattanooga: For the last six years, geography has been part of the Social, Cultural, and Justice Studies department, but, prior to this, geography was part of the Sociology, Anthropology, and Geography department. In 2025, it is expected that our department will split and sociology, anthropology, and geography will once again be a separate department with our old name: Department of Sociology, Anthropology, and Geography. As geographers, we are thrilled that the name "geography" will return to the list of department names. This is significant because geography is only a minor and we need as much exposure across campus as possible. As stated above, our enrollments are slightly up and we added a lecturer in physical geographer two years ago. One of our biggest challenges is travel budget limitations to professional conferences.

University of Tennessee at Knoxville: Geography is growing at UT, especially from the GIST and Sustainability sides.

University of Tennessee at Martin: Since our geography and geology programs are combined into geoscience, we only offer one entry level physical geography lab course. And, the majority of our geography students major in meteorology and minor in GIS. Once we have our new faculty member in place we will be in much better shape. We had two faculty who left, one a year ago for health issues and the other this semester for a job opportunity close to where he is from.

H. State of SEDAAG

Austin Peay State University: I am not necessarily the best individual to answer this question as I have not attended a single AAG or SEDAAG conference since COVID. Early on this was driven by a reticence to congregate in large gatherings but more recently due to a relentless schedule with a significant amount of administrative responsibilities. If some of the SEDAAG

sessions were simulcast via Zoom or recordings made and posted I would be much more inclined to view those. I do believe that SEDAAG is a good regional division, I enjoyed past meetings I attended albeit only three or four, but most professional organizations lack any significant carrot to hold on to membership short of discounts on the annual meeting. This has been remarked by a number of individuals I know who serve on executive committees of other organizations.

Tennessee Technological University: No response.

University of Memphis: No response.

University of Tennessee at Chattanooga: We have one faculty member that has been an active participant in SEDAAG for 30 years. SEDAAG, and its high-quality annual meeting, is a highlight of this faculty members calendar year. Our new faculty member is actively engaged in the SEDAAG World Geography Bowl and looks forward to further participation over the coming years.

University of Tennessee at Knoxville: SEDAAG is the best regional organization. The annual conference is a highlight. Keep up the good work.

University of Tennessee at Martin: Overall I am pleased with SEDAAG and really like the fact that I can go online and research past articles. I do wish the publication was a little more diverse on the topics in which they select for publication.

9.j. West Virginia SEDAAG Survey Summary: 2023-2024 Academic Year

Surveys solicited by Dr. Selima Sultana, Professor at UNC Greensboro Summary
prepared by Dr. Thomas Saladyga, Professor at Concord University

A. Institutional Information

Eight universities in West Virginia offer coursework and/or degrees in geography or related fields. Five of these universities responded to the 2024 SEDAAG Survey. The contacts and degree information for these departments are summarized in the table below:

Table 1. Universities Responding to the 2022-2023 SEDAAG Survey

Institution	Department and Survey Contact	Geography (and related) Degrees Offered
Concord University	<ul style="list-style-type: none"> • Department of Physical and Environmental Sciences • Dr. Thomas Saladyga 	<ul style="list-style-type: none"> • B.S. in Environmental Geosciences • Minor in Environmental Geosciences • Minor in Geospatial Information Science
Davis & Elkins College	<ul style="list-style-type: none"> • Biology, Environmental Science, Sustainability • Dr. Michelle Mabry 	<ul style="list-style-type: none"> • Minor in Geospatial Analysis
Marshall University	<ul style="list-style-type: none"> • Department of Geography • Dr. James Leonard 	<ul style="list-style-type: none"> • B.A. in Geography • B.S. in Geography • Online B.A./B.S. in Geography • Minor/Undergraduate Certificate in GIS • M.A. in Geography • M.S. in Geography • Online M.A. in Geography • Graduate Certificate in GIS (Basic and Advanced)
West Liberty University	<ul style="list-style-type: none"> • Department of Humanities and Social Sciences • Mr. Aron Massey 	<ul style="list-style-type: none"> • B.S. in Geography and Planning • Minor in Geography and Planning • Minor in Appalachian Studies
West Virginia University	<ul style="list-style-type: none"> • Department of Geology and Geography • Dr. Jamison Conley 	<ul style="list-style-type: none"> • B.A. Sustainability Studies • B.S. Earth and Environment Science • M.S. in Geology • M.A. in Geography • M.S. in GIS and Spatial Analysis (Online) • Ph.D. in Geology • Ph.D. in Geography • Graduate Certificate in GIS and Spatial Analysis

In addition to these five institutions with geography faculty and/or programs, the Department of Land Resources at Glennville State University offers an online GIS certificate, Fairmont State University offers a minor in Geographic Information Science, and Shepherd University offers geography coursework that supports the majors in Global Studies and Environmental Studies.

B. Institution Highlights

Concord University

No geography degree is offered, but a new GIS certificate is being integrated into the Environmental Geosciences major. Undergraduate course enrollments in geography courses are stable. The focus is on specific subfields (physical geography and GIS), with human geography courses decreasing or absent. Graduates of the Environmental Geosciences program often find employment with state agencies and environmental consulting firms. The state of geography is generally stable but under-resourced, and there are challenges related to maintaining visibility within the institution.

Davis & Elkins College

A minor in Geospatial Analysis is offered and GIS is an important component of course offerings. GIS course offerings and undergraduate enrollments are still down. Graduates typically work as GIS technicians. Geography is integrated into environmental science programs, with GIS being a significant draw for students, but competition with other departments presents challenges. There have been preliminary talks with Marshall University about developing a GIS major.

Marshall University

Undergraduate and master's degrees in geography are offered. Enrollment in both undergraduate graduate courses remain stable, but undergraduate majors are declining. Course offerings have remained steady, with some emphasis on general education and GIS-related courses. Physical geography was recently classified as a general science general education course, which should have a positive effect on course enrollment. Graduates are primarily employed in GIS, weather services, and local government roles. The state of geography is stable, but faculty have noted a slight decrease in student interest. There are budgetary constraints (technology) and a need for interdisciplinary collaboration.

West Liberty University

An undergraduate geography degree is offered. Undergraduate course enrollments are stable, but there are a declining number of majors. Demand from general education and other degree programs (e.g., social studies education) is supporting course enrollment. Course offerings remain steady, with no substantial changes. Graduates often pursue careers in public service, local government, and community planning. The program balances traditional geography with emerging areas like GIS. There are limited faculty resources and it has been difficult adapting to student demands for more applied learning opportunities.

West Virginia University

Master's and doctoral degrees in geography are offered and undergraduate degrees in Sustainability Studies and Earth and Environmental Science were recently launched.

Undergraduate enrollments are growing, and graduate programs are stable. The number of majors is increasing, reflecting the appeal of new programs. Course offerings are stable, with emphasis on integrating sustainability and GIS into the curriculum. Graduates find opportunities in public and private sectors, often linked to sustainability initiatives. The state of geography is generally positive, but faculty express a need for more resources.

C. Opportunities

- Growing interest in GIS and geospatial technologies.
- New interdisciplinary programs, such as sustainability studies (WVU).
- Stable or growing undergraduate enrollments, particularly in GIS.
- Seems to be alignment with workforce demands.
- Potential for growth through interdisciplinary or institution collaboration.

D. Challenges

- Declining (or stable) numbers of geography majors.
- Limited resources, including budget constraints and small faculty numbers.
- Competition with other disciplines for resources and students.
- Decline or no mention of traditional human geography courses.
- Difficulty maintaining visibility and relevance.

E. State of Geography

Each department's response is quoted below:

Concord University: “The state of geography at Concord University is stable since the program was terminated in 2020 and one physical geographer moved to the Environmental Geosciences program. General education, upper-level physical geography, and GIS courses continue to be offered. The number of majors in this program, however, continue to decline.”

Davis & Elkins College: “GIS still plays a large role for Environmental Science and Sustainable Resource Management majors. We have been in talks to develop a GIS major with Marshall Univ., but there are some logistical hurdles to overcome.”

Marshall University: “We are pretty stable. We've seen a bit fewer majors than during COVID. We think that is because our programs were online before COVID and COVID meant more online students, but then everyone went online during COVID, so we have more competition now. We won a recent turf war by getting our GEO101 Physical Geography classified as gen ed natural science which will mean more non-majors taking the class. Our admin will NOT replace our twenty-five 13-year-old computers in our GIS/RS lab. Instead, each student will have to run the software on their own devices. So we are trying to get 5 each year as an alternative. We think we still need lab computers that are beefy enough to handle GIS/RS/drone imagery processing.”

West Liberty University: “We are maintaining a small but vibrant Geography and Planning major and minor at WLU. There are lots of great projects and internships available to our students, but attracting new students is a challenge with decreasing university enrollments. We tend to replace graduating majors, but struggle to grow those numbers back to where they were prior to Covid. We are focusing on marketing the major to existing students at the University, while also being more active in recruitment. Luckily, we are fully integrated into both the general studies curriculum and social studies education curriculum, which provides substantial enrollment in our courses, even if the number of Geo majors remains stagnant.”

West Virginia University: “The new BA in Sustainability Studies and the new BS in Earth and Environmental Science are growing well, and are close to, if not fully, on track to meet enrollment targets by the time they are reviewed after their third year. The bad news is the state of the university as a whole, as WVU is still reeling from the effects of the "Academic Transition" from last year. We will be getting a new president soon, which will hopefully be an improvement, but one never knows. Thus, there is uncertainty about pretty much everything, including the budget. Turf wars have, at least temporarily, seemed to decrease as some of the competitors for the turf have been eliminated through academic transformation. However, new budget model(s) may or may not be of the type to increase competition among departments for students, so this may be a temporary truce. The curriculum is stable, as we are not generally permitted to introduce new courses while the new majors are being rolled out. Technology--a couple computer labs have recently or will soon be updated with new computers.”

F. State of SEDAAG

Each department’s response is quoted below:

Concord University: “SEDAAG leads the regional AAG divisions in many regards. The annual conference in particular is strong and provides a great venue for undergraduate and graduate students. However, competition from more specialized or other interdisciplinary meetings continues to be a factor in participation.”

Davis & Elkins College: “I don't teach the GIS courses so I'm not familiar with SEDAAG.”

Marshall University: “The journal is still strong. I haven't attended a Conference in a while.”

West Liberty University: No response.

West Virginia University: “The State of SEDAAG is, to the best of my knowledge, as it has been, which is the strongest of the divisions, with a larger division meeting. It also provides the most funding for WGB teams, which can be an indicator of financial health and support for students. I have not, however, been to the national meeting in a while to have a good sense of comparison.”

10. Vice President and Program Chair Report 2024 SEDAAG

Submitted by Dr. Amy Potter, Georgia Southern University

Category	2023	2024	Change
Paper Sessions	25	28	+3 sessions
Paper Submissions	138	174	+36 submissions
Organized/Special Paper Sessions	7	8	+1 session
Panel Sessions	4	7	+3 sessions
Panelists	Not Reported	63	New data
Poster Sessions	3 (Honors, Undergraduate/Honors, General)	5 (Honors, Undergraduate/Honors, General)	+2 sessions
General Poster Submissions	31	49	+18 submissions
Graduate Poster Submissions	23	26	+3 submissions
Undergraduate/Honors Posters	37	37	No change

Paper Sessions: 28

- Paper submissions 174

Special Paper Sessions: (including Honors) 8

Panel Sessions: 7

Panelists: 63

Poster Sessions: 5 (Honors, Undergraduate/Honors, General)

- General Poster Submissions: 49
- Graduate Poster Submissions: 26
- Undergraduate and Undergraduate Honors Competition Posters: 37

Changes:

- Implemented Google Forms for the submission process again this year, adding clarification on graduate submissions to reduce confusion and introducing additional categories based on session themes from the previous year's program.
- Used Google Forms for reporting program mistakes.

- Moved the submission deadline up by a week, which helped local arrangements with room reservations and AV needs.
- Established a timeline for program due dates in collaboration with all relevant parties.

Recommendations:

- Include in the SEDAAG instructions a limit of one paper or poster presentation submission per person (excluding panels).
- Consider adding a disclaimer about panel participation, as scheduling panels can be particularly challenging.
- The Honors Committee should strongly consider not presenting.
- Adjust the timeline for undergraduate submissions to better align with program preparation needs for local arrangements.

11. Treasurer's Report
2024 SEDAAG
Submitted by Dr. Sarah Praskievicz

Financial Summary

As of November 18, 2024, the total assets of SEDAAG are \$172,433.52, a decrease of \$25,123.48 from November 30, 2023, at the end of the organization's last tax year.

Appendices I and II provide itemized details on all assets and transactions from December 1, 2023, for both the checking account and the money market account (the organization's tax year runs from December 1 to November 30 each year).

Revenues

As of November 18, 2024, total revenues since December 1, 2024, were \$29,494.06, a decrease of \$40,986.18 from the previous tax year. This revenue total includes membership dues, 2024 conference sponsorships already received, *Southeastern Geographer* journal surplus/royalties, AAG's contribution to SEDAAG, and interest earnings. Revenue includes membership dues processed through the *Southeastern Geographer* journal publisher (\$1153), and fiscal year surplus/royalties for *Southeastern Geographer* from UNC Press (\$13,429.68). AAG contributed \$4500 as a Regional Division Program Subsidy and \$1000 for AAG support of World Geography Bowl. The total amount received for 2024 conference sponsorships as of November 18, 2024, is \$7400, and 2024 revenue also includes \$2000 for 2023 conference sponsorships that were received late. Investment income from SEDAAG's money market account totaled \$11.38. Not reflected in the revenues above is the registration fee revenue from the upcoming 2024 Greenville annual conference, which SEDAAG will receive from AAG, who processes the conference registrations, in the next tax year after the conclusion of the conference.

Expenditures

As of November 18, 2024, total expenditures since December 1, 2023, were \$54,617.06, an increase of \$38,287.62 from the previous tax year. Expenditures to date include a final balance of \$35,253.60 due to the Sheraton Norfolk Waterside for the SEDAAG 2023 annual meeting; a \$3600 deposit to the Hyatt Regency Greenville for the SEDAAG 2024 annual meeting; \$4050 for SEDAAG World Geography Bowl at AAG team members; \$500 for one SEDAAG mini grant; \$2950 for SEDAAG student awards from the 2023 annual meeting; \$8000 in editorial support funds and honoraria for the editors of *Southeastern Geographer*; and \$263.45 in reimbursements for World Geography Bowl plaques. There are also upcoming expected expenses. As of November 18, SEDAAG had not yet received an invoice for a balance due for the 2024 Greenville meeting. Other upcoming expenditures include 2024 annual meeting awards/plaques/World Geography Bowl winners, etc.

SEDAAG Membership

As of November 1, 2023 (date of the most recent membership report from UNC Press), SEDAAG membership has remained steady (277 members) from the membership numbers reported in the previous year (277) in 2022, and is still higher than 2020 membership (160). Non-student membership increased from 137 to 151, while student membership decreased from 140 to 126 members. Although membership has certainly rebounded since 2020, considering the size of the SEDAAG region and compared to the previous decade our membership numbers are

still concerning and warrant **ongoing discussion and planning to continue to grow student and non-student membership numbers.** Appendices IV, V, and VI provide details on total, non-student, and student membership trends, respectively, from 2010 to 2023.

Respectfully submitted,

Sarah Praskieviczl, PhD

Treasurer, SEDAAG, 2023-2024

Associate Professor, Department of Geography, Environment, and Sustainability, University of North Carolina Greensboro

Appendix I: Checking Account

Date	Description	To/From	Note	Deposit	Withdrawal	Balance
12-1-23	Balance					\$75,082.85
12-4-23	Check #5049	Ryleigh Choplin	2023 undergraduate paper award		(100.00)	\$74,982.85
12-5-23	Check #5045	Dawn Drake	WGB plaques reimbursement		(263.45)	\$74,719.40
12-7-23	Check #5041	Brian Williams	SEG editor honorarium		(2000.00)	\$72,719.40
12-11-23	Check #5052	Bryttani Wooten	2023 master's paper award		(500)	\$72,219.40
12-13-23	Check #5050	Miles Baker	2023 undergraduate poster award		(200)	\$72,019.40
12-15-23	Check #5043	Shrinidhi Ambinakudige	SEG editor honorarium		(2000)	\$70,019.40
12-18-23	Check #5034	Katrina Stack Finkelstein	2024 SEDAAG mini grant		(500)	\$69,519.40
12-21-23	Check #5051	Elisa Luckabough	2023 undergraduate poster award		(200)	\$69,319.40
12-27-23	Check #5047	Audrey Heichelback	2023 undergraduate poster award		(200)	\$69,119.40
1-10-24	Check #5044	Mississippi State University	SEG editorial support funds		(4000)	\$65,119.40
1-10-24	Check #5046	Ella Hunter	2023 Merle Prunty Award		(500)	\$64,619.40
1-12-24	Check #5053	Avery Catherwood	2023 Ph.D. paper award		(1000)	\$63,619.40
1-22-24	Check #5048	Jade Lee	2023 graduate poster award		(250)	\$63,369.40
1-22-24	Check #5055	Hyatt Regency Greenville	2024 meeting deposit		(3600)	\$59,769.40
1-25-24	Mobile deposit	Virginia Tech	2023 meeting sponsorship	\$500.00		\$60,269.40
1-25-24	Mobile deposit	Old Dominion University	2023 meeting sponsorship	\$1000.00		\$61,269.40
1-26-24	Check #5054	Sheraton Norfolk Waterside	2023 meeting costs		(35,253.61)	\$26,015.79

Date	Description	To/From	Note	Deposit	Withdrawal	Balance
4-1-24	Mobile deposit	University of Oklahoma	2023 meeting sponsorship	\$500.00		\$26,515.79
4-1-24	Mobile deposit	AAG	2024 WGB travel support for SEDAAG team	\$1000.00		\$27,515.79
5-13-24	Check #5056	Jessica Striley	2024 WGB team travel		(675.00)	\$26,840.79
5-13-24	Check #5057	Seth Kannarr	2024 WGB team travel		(675.00)	\$26,165.79
5-15-24	Check #5058	Kaleb Dunlap	2024 WGB team travel		(675.00)	\$25,490.79
5-15-24	Check #5059	Jack Swab	2024 WGB team travel		(675.00)	\$24,815.79
5-16-24	Mobile deposit	UNC Press	Membership dues	561.00		\$25,376.79
5-20-24	Check #5061	Audrey Smith	2024 WGB team travel		(675.00)	\$24,701.79
6-12-24	Check #5060	Alexander Perry	2024 WGB team travel		(675.00)	\$24,026.79
9-4-24	Mobile deposit	University of South Carolina	2024 meeting sponsorship	\$1000.00		\$25,026.79
10-8-24	Mobile deposit	AAG		\$4500.00		\$29,526.79
10-18-24	Mobile deposit	University of Oklahoma	2024 meeting sponsorship	\$1000.00		\$30,526.79
10-25-24	ACH credit	UNC Chapel Hill	2024 meeting sponsorship	\$1000.00		\$31,526.79
10-28-24	Mobile deposit	Virginia Tech	2024 meeting sponsorship	\$500.00		\$32,026.79
10-28-24	Mobile deposit	Furman University	2024 meeting sponsorship	\$750.00		\$32,776.79
11-4-24	Mobile deposit	Georgia State University	2024 meeting sponsorship	\$2000.00		\$34,776.79
11-6-24	Mobile deposit	University of North Carolina Charlotte	2024 meeting sponsorship	\$1000.00		\$35,776.79

Appendix II: Money Market Savings Account

Date	Description	To/From	Note	Deposit	Withdrawal	Balance
12-1-23	Balance					\$122,473.67

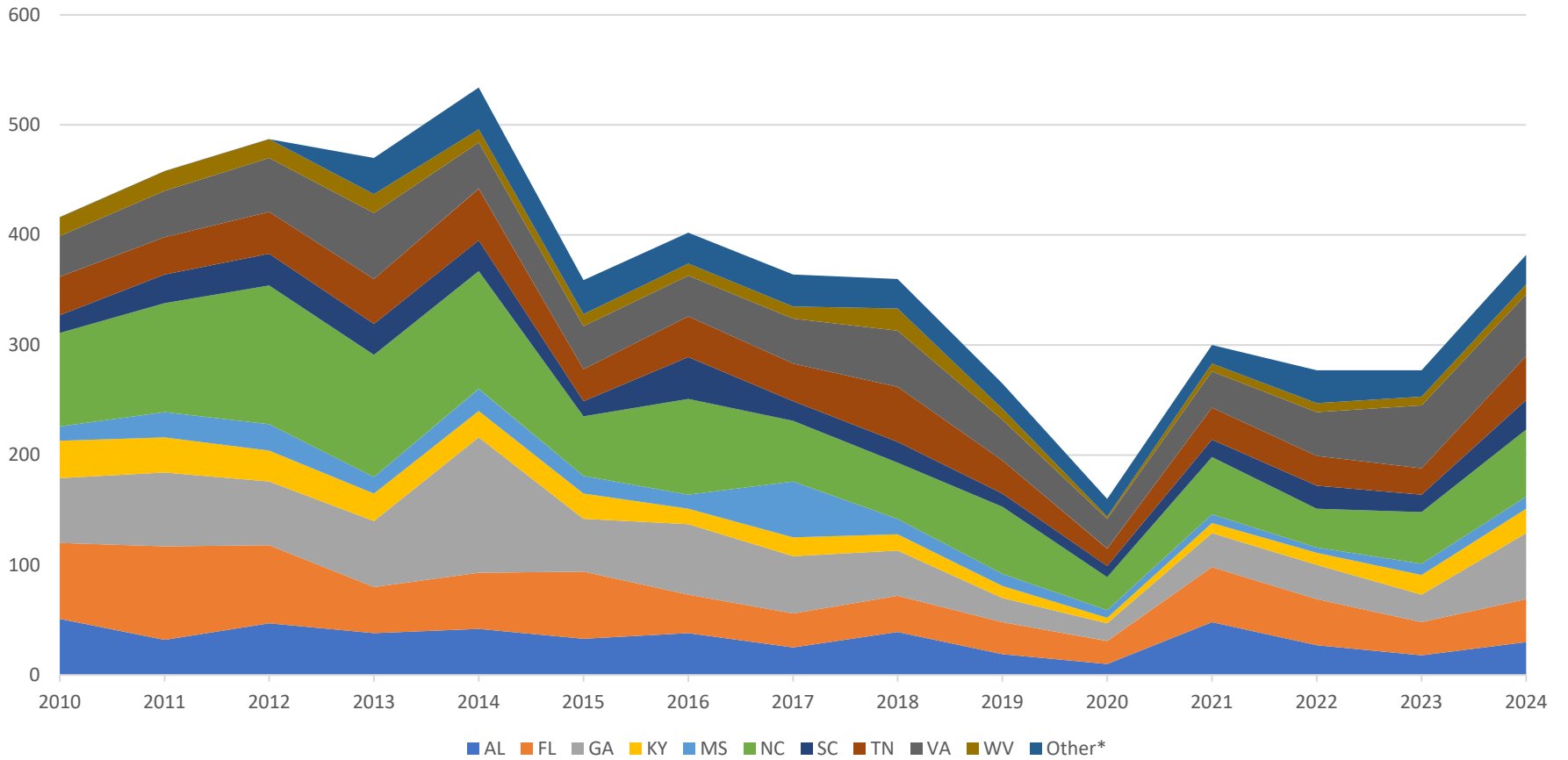
Date	Description	To/From	Note	Deposit	Withdrawal	Balance
12-29-24	Interest Paid This Statement		Interest	\$1.04		\$122,474.71
1-31-24	Interest Paid This Statement		Interest	\$1.04		\$122,475.75
2-29-24	Interest Paid This Statement		Interest	\$0.97		\$122,476.72
3-29-24	Interest Paid This Statement		Interest	\$1.04		\$122,477.76
4-30-24	Interest Paid This Statement		Interest	\$1.00		\$122,478.76
5-31-24	Interest Paid This Statement		Interest	\$ 1.04		\$122,479.80
6-28-24	Interest Paid This Statement		Interest	\$1.00		\$122,480.80
7-31-24	Interest Paid This Statement		Interest	\$1.04		\$122,481.84
8-30-24	Interest Paid This Statement		Interest	\$1.04		\$122,48.88
9-9-24	Mobile deposit	UNC Press	Member dues	\$592.00		\$123,074.88
9-30-24	Mobile deposit	UNC Press	SEG surplus	\$13,429.68		\$136,504.56
9-30-24	Interest Paid This Statement		Interest	\$1.01		\$136,505.57
10-08-24	Mobile deposit	Ronald L. Schumann III	2024 meeting sponsorship	\$150.00		\$136,655.57
10-31-24	Interest Paid This Statement		Interest	\$1.16		\$136,656.73

Appendix IV: Total Membership

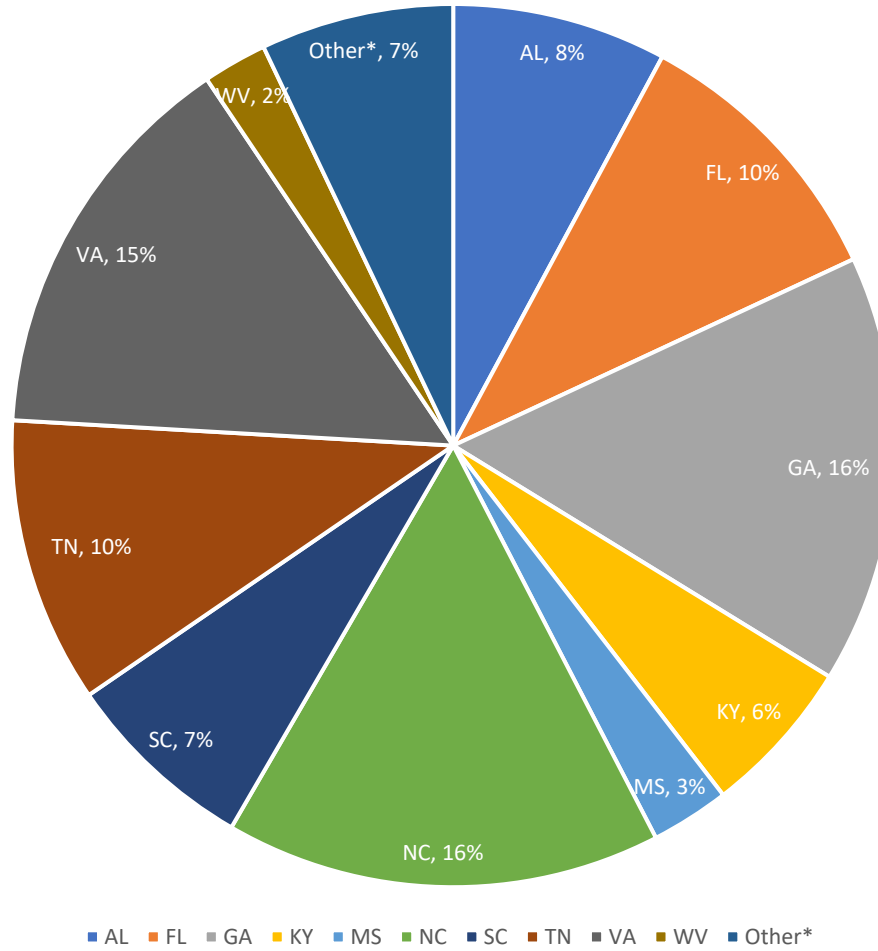
State	2016	2017	2018	2019	2020	2021	2022	2023	2024	2023-24% Change	State
AL	38	25	39	19	10	48	27	18	30	12	AL
FL	35	31	33	29	21	50	42	30	39	9	FL
GA	64	52	41	22	16	31	31	25	60	35	GA
KY	14	17	15	11	5	9	11	18	22	4	KY
MS	13	51	14	11	7	8	5	10	11	1	MS
NC	87	55	51	61	30	52	35	47	61	14	NC
SC	38	18	19	12	10	16	21	16	27	11	SC
TN	37	34	50	30	16	29	27	24	40	16	TN
VA	37	41	51	37	27	33	40	57	56	-1	VA
WV	11	11	20	10	2	7	8	8	9	1	WV
Other*	28	29	27	23	16	17	30	24	27	3	Other*
Total	402	364	360	265	160	300	277	277	382	105	Total

* "Other" includes AR, AZ, CA, ID, IL, IN, LA, MD, MI, MO, NY, OH, RI, TX, VT, WI, WY. Data are based on membership report received from the *Southeastern Geographer* publisher, UNC Press, on November 18, 2024.

SEDAAG Total Membership by State (2010 to 2024)



SEDAAG 2023 Total Membership Percent by State (N=382)



Appendix V: Non-Student Membership

State	2010	2011	2012	2013	2014	2015	2016	2017	2018	2019	2020	2021	2022	2023	2024	2023-24 % Change
AL	26	22	39	25	19	21	19	16	21	10	10	22	10	11	16	5
FL	39	50	35	30	29	33	17	18	17	24	14	25	16	13	22	9
GA	28	22	26	27	45	19	27	23	21	18	12	12	16	15	20	5
KY	20	20	20	18	20	16	11	14	10	8	5	7	4	5	9	4
MS	10	13	16	9	13	11	10	28	9	8	6	7	4	4	8	4
NC	52	57	70	62	61	38	43	32	30	32	20	30	19	25	43	18
SC	14	17	14	17	14	12	21	14	13	11	6	11	6	7	15	8
TN	28	21	17	18	22	13	20	13	22	15	7	16	12	15	17	2
VA	31	32	30	31	26	20	20	27	33	24	22	26	21	29	24	-5
WV	14	16	14	15	11	10	8	8	12	10	1	7	5	7	8	1
Other*	-	-	-	28	20	21	17	18	16	16	13	17	24	20	16	-4
Total	262	270	281	280	280	214	213	211	204	176	116	180	137	151	198	47

Appendix VI: Student Membership

State	2010	2011	2012	2013	2014	2015	2016	2017	2018	2019	2020	2021	2022	2023	2024	2023-24 % Change
AL	25	10	8	13	23	12	19	9	18	9	0	26	17	7	14	7
FL	30	35	36	12	22	28	18	13	16	5	7	25	26	17	17	0
GA	31	45	32	33	78	29	37	29	20	4	4	19	15	10	40	30
KY	14	12	8	7	4	7	3	3	5	3	0	2	7	13	13	0
MS	3	10	8	6	7	5	3	23	5	3	1	2	1	6	3	-3
NC	33	42	56	49	46	16	44	23	21	29	10	22	16	22	18	-4
SC	2	9	15	11	14	2	17	4	6	1	4	5	15	9	12	3
TN	7	13	21	23	25	16	17	21	28	15	9	13	15	9	23	14
VA	6	10	19	29	16	19	17	14	18	13	5	7	19	28	32	4
WV	3	2	3	2	1	1	3	3	8	0	1	0	3	1	1	0
Other*	-	-	-	5	18	10	11	11	11	7	3	0	6	4	11	7
Total	154	188	206	190	254	145	189	153	156	89	44	121	140	126	184	58

12. Secretary/Webmaster's Report and Communications 2024 SEDAAG

Submitted by Dr. Mark Sciuchetti, Jacksonville State University

Website Updates and Maintenance

- The SEDAAG website continues improving with updates on user experience and accessibility.
- Outdated materials and redundant pages have been archived, creating a streamlined platform.

B. Digital Curation Fellow Appointment

- **Sheila Jebiwott**, a Ph.D. student in Geography at the University of North Carolina Greensboro, has been appointed as the **Digital Curation Fellow for 2024-2025**.
- The fellowship is funded by an AAG grant with a \$2,500 stipend distributed over two installments.
- Responsibilities include:
 - Cataloging historical records of committees, journal editors, and executive members.
 - Digitizing and organizing paper records into a searchable, user-friendly digital archive.
 - Developing guidelines to ensure the long-term sustainability of the archive.
 - Documenting and archiving activities at the 2024 and 2025 annual meetings.
- This fellowship is an important step toward preserving SEDAAG's historical records and improving digital infrastructure.

C. Enhanced Social Media Engagement

- SEDAAG's social media presence continues to grow on Facebook, X (formerly Twitter), Instagram, and LinkedIn.
- Members are encouraged to:
 - Tag SEDAAG accounts in posts.
 - Share and engage with SEDAAG content to expand visibility.
- Suggestions for improving social media strategies are welcomed.

D. Email Communication Metrics and Success

- Email communications via **Constant Contact** have been highly effective in engaging members.
- **Performance metrics for the past year:**
 - Emails sent: **35,645** (+10,241 compared to last year).
 - Delivered emails: **33,255** (+8,553).
 - Open rate: **49%** (13% above the industry average but down 3% from last year).
 - Click rate: **10%** (8% above the industry average, showing a 6% improvement).
 - Bounces: **2,390** (+1,688).
 - Unsubscribes: **30** (a decrease of 2).
- **Notable campaigns:**
 - *Final Reminder to Register for SEDAAG 2024*: 77% open rate, 25% click rate.
 - *2024 Annual Conference Reminder - Upcoming Deadlines*: 76% open rate, 33% click rate.
- **Recommendation:** Continued use of Constant Contact is advised at an annual cost of \$500, given its efficiency and performance.

E. Communication Enhancement from Committee Chairs and State Representatives

- Improved communication between committee chairs, state representatives, and the secretary's office is critical.
- Regular updates from these leaders are essential for timely dissemination of information to members.
- Establishing a schedule for updates and consistent communication will improve the quality and frequency of shared content.

F. Website and Social Media Contributions

- Members are strongly encouraged to submit updates, announcements, job postings, and other relevant content.
- Submissions should include the secretary in email communications to ensure timely and efficient dissemination.

G. Feedback and Future Enhancements

- Suggestions for:
 - Website improvements.
 - Expanding social media strategies.
 - Refining email communication.
- Member feedback will guide future updates to ensure SEDAAG's communication platforms remain responsive and effective.

Respectfully submitted,

Dr. Mark J. Sciuchetti Jr.

Secretary/Webmaster, SEDAAG

14. Geography Bowl Report
2024 SEDAAG
Submitted by Dr. Dwan Drake, University of Oklahoma
November 24, 2024
Greenville, SC

1. 2024 Bowl Preview (As of 11/21)

- As of the end of preregistration, we only had one team that represented more than one school, so I made an executive decision to try doing things the way SWAAG does with schools facing off against each other. We currently have teams from University of Mary Washington, University of Florida, University of North Alabama, and University of Kentucky and we will have at least one team of players from other schools bannng together.
 - 25 Students pre-registered by a faculty sponsor or using the Google form.
 - Questions and volunteers sufficient to field up to 8 teams.
- 10 rounds of questions written by 10 writers
- 13 volunteers managing Sunday's bowl
- Faculty Dream Team participants: Dr. Rebecca Lave, Dr. Selima Sultana, Dr. Jamison Conley, Dr. Geoffrey Habron, Dr. Joshua Hodge, and Dr. Matthew Therrell
- Dream Team round questions written by Dr. Ethan Bottone
- Championship round questions written by Dr. Jamison Conley and Lee Ann Nolan

2. Ongoing reminders and discussions

- Schedule Conflicts
 - Important source of travel funding for students
 - Thank you for all the effort to allow students and faculty not to have conflicts.
- State Coordinators?
 - States with coordinators tend to do better in the bowl, similar to the national experience.
 - Coordinators lead to higher levels of pre-registration of players, which helps with planning.
 - Coordinators are key in creating community for teams, but it is difficult to find coordinators who have time to reach across their states to field teams that represent more than their own schools.

3. Budget

- Plaques were ordered from previous supplier in Missouri and picked up rather than incur the cost of having the artwork set again at a vendor in Norman (\$218.45).
- Travel funding for 2025 AAG
 - In the past SEDAAG has provided \$500 per student. Please approve travel funding for the team for 2025 at whatever level you feel appropriate and notify me, so I can give the students the best information possible when deciding to join the team for AAG.
 - AAG's funding is unknown at this time, however in the past it has been \$500 per region (total), with a \$500 bonus if the region also funds the students.
 - Please know that the students are very grateful for the travel funding they receive each year. They also are well aware that most regions are not as lucky.

4. PG Article and Subsequent Rebuttal

- As of this past Monday, [a response](#) to the Craig et al article regarding the WGB, was posted on the *Professional Geographer's* website. Thank you to AAG WGB Director, Jamison Conley, for leading that effort and the five other authors who helped Jamison and I bring it to fruition. We also recognize the over fifty people who represent players, volunteers, and leadership spanning over the entire four decades that the event has been in existence who provided content and context for the response. Jamison and I would also like to emphasize that we do not view this as an issue that has “sides” and would prefer that the discussion not be turned into or framed as a confrontation.
- What has been done in response to the criticisms in the article:
 - It is first important to note that WGB is not a closed society. Anyone is free to participate, volunteer, and make suggestions. To increase access, we have added an anonymous survey to events that is accessible via QR code. Jamison and I are also holding a town hall after the Round Robin on Sunday to listen to complaints, suggestions, and hopefully compliments to make the Bowl better. The town hall is hoped to be a forum where everyone who wants to be heard about the bowl can have equal access to time to ask questions, air concerns, or provide suggestions, instead of only a few voices that represent a subset of the population, receiving attention.
 - However, the way that the SEDAAG “World Geography Bowl Committee” is formed is not necessarily transparent. The notion that there is a committee is a bit of a misnomer. In the past, the names we listed in the program as the “Committee” were the question writers, because their names did not otherwise appear in the program as volunteers for the Bowl. When it came to making decisions, typically I made those on my own, or in consultation with volunteers for the SEDAAG bowl that had long term experience at both SEDAAG and national levels. This year, I removed the word “committee” from the information I submitted for the program, although it was reinserted and that was on me not to notice that. We currently are a group of volunteers, and anyone is welcome to join. If SEDAAG would like a more formal structure, I am open to a discussion about what that looks like and who would oversee it.
 - It is also important to note that none of the valid criticisms in the article were new information to the AAG Executive Committee of WGB. Several of them have been the focus of numerous policy shifts over time, many of which had undesired secondary effects that were not predicted. Many remain to be ironed out, but that does not mean we do not continue to try or care. Some are issues that are beyond the ability of the committee to fix due to financial constraints, the realities of time when the committee is entirely composed of volunteers or are problems that WGB cannot fix alone (such as the dominance of white males in the discipline).
 - In response to the criticism of asking for gender on the registration form (as a means of ensuring a mix of genders, which is a requirement of a team that participates in the Bowl) we have moved from a dropdown list that provided a standard list of genders, including nonbinary and other to a box where the competitor can provide their own preferred pronouns. The requirement for a token “female” on the team has not existed in many years. SEDAAG did attempt to get rid of a gender requirement altogether for two years in the mid-2010s. The experiment ended when a hostile team of all male players detracted from the experience for the majority of players. We feel that preferred pronouns, which are also asked for by AAG, is the most non-exclusionary way we can do this, but we are open to other suggestions that do not result in rewarding teams that are exclusionary to others or make other teams feel uncomfortable.

- In response to feedback from another source that we received last year, where students felt forced to play on other teams, I have heard that feedback and apologize. The rearranging of players onto other teams was done in the hopes of providing people with a chance to play in as many rounds as possible, but now I realize that players do not care as much about that as the volunteers did when they were players themselves. This year we gave players an opportunity to tell us if they were willing to be separated from their team (if they were signed up by a state coordinator) or to tell us if there was someone they wanted to be paired with on a team (if they signed up individually). This ultimately resulted in teams that were made up entirely of students from one school who were not willing to play on other teams. I am not going to force those teams, who wish to remain insular, to take on a player from another school. This is why we are testing the SWAAG concept of having schools play head-to-head. People who wish to play, but do not have teammates from their school will still be accommodated on what we traditionally call the “spoiler teams.” These are teams formed from parts of state teams and have resulted in some of our most memorable super teams – like the WWAY team made up of players from West Virginia, Virginia, and Kentucky.
- In addition to making modifications to the registration process and committee structure, in response to feedback, we also started a mentoring program for our newer question writers this year. This has been a needed process for some years, but we simply did not have the time. I want to thank Jamison Conley, Lee Ann Nolan, and Darren Purcell who mentored our first group of writers this year. The result was questions that came to the editing committee in much better condition than they have in the past and more opportunity for the writers to learn through constructive feedback instead of observation of how their questions were edited after the fact.
- As to the authors’ suggestion of moving away from the WGB format, there is nothing that says that a local arrangements committee cannot decide to have more than one type of event. We recognize that WGB is not everyone’s strength and there are other ways to build, “comradery across academic institutions and programs,” as was the original intent of WGB founder Neil Lineback. WGB requests our time from the Vice President each year and if another group wanted to form to come up with another format, it would be up to the local arrangements committee and the VP to decide when and if to place the other event on the schedule and for the SEDAAG Executive Committee to provide a budget to support it.
- If there are other parts of the article that you would like me to address, that were not addressed in our response, please ask.

Submitted by:

Dr. Dawn M. Drake
 University of Oklahoma
dmdrake@ou.edu

15. *Southeastern Geographer* Annual Report
SEDAAG Annual Meeting
Greenville, South Carolina
November, 2024

2024 has seen some exciting new developments for *Southeastern Geographer*, from the institution of early release articles to the finalization of an official impact factor for the journal. In 2024, we were fortunate to work with Nishat Shermin and Brannan Tisdale as our editorial assistants. They have both completed their appointments as editorial assistants, and we are happy to welcome Yuria Sloane as our new editorial assistant. Madhuri Sharma, the book review editor, has done an excellent job of soliciting book reviews and bringing these reviews through the process. We continue to encourage SEDAAG members, both faculty and student alike, to reach out if they have books that they would like to review.

As editors of *Southeastern Geographer*, we work to provide careful editorial attention and guidance, and benefit from a significant pool of excellent reviewers who are committed to the mission of the journal. For these reasons, over the past year, we have managed to maintain both a high acceptance rate and the excellent scholarly standards that have come to be associated with the journal. Of manuscripts first submitted between November 2023 and October 2024, we received a total of 19 scholarly manuscripts. Of these, 12 (63%) have been accepted, while 3 (16%) have been rejected, and 4 (21%) are in review or awaiting revisions. Among accepted and pending manuscripts, 12 (75%) received an initial decision of major revisions, while 4 (25%) received a decision of minor revisions, and none were accepted without revisions.

With a surplus of \$13,429.68 for 2023-2024, *Southeastern Geographer* continues to serve as a financial asset to SEDAAG, while furthering the scholarly mission of the Southeastern Division. From 2022-2023 to 2023-2024, *Southeastern Geographer* saw a slight decline in income, and a slight increase in expenses (Table 1). Digital revenue remains, by far, the largest source of income for the journal. In 2023, the journal saw 69,014 downloads, text requests, and item requests across Project MUSE, JSTOR, and EBSCO. After eight consecutive years of growth in digital readership from 2013-2020, the journal has seen three consecutive years of slightly declining digital interactions (Table 2). We are monitoring these trends in conjunction with UNC Press. One of our key goals for the remainder of our editorial tenure is to increase the visibility and readership of the journal. We encourage members of SEDAAG to incorporate *Southeastern Geographer* articles in class when possible, and to link directly to articles when possible, rather than uploading PDFs. When readers access an article digitally, this translates directly into revenue for the journal, and by extension, for SEDAAG.

Table 1. Journal Income, Expenses, and Revenue: 2021-2024

	Vol. 63.3, 63.4, 64.1 & 64.2	Vol. 62.3, 62.4, 63.1 & 63.2	Vol. 61.3, 61.4, 62.1, & 62.2
	4 Issues	4 Issues	4 Issues
Income			
Subscription Sales	3,520.35	5,564.17	6,217.48
Digital Revenue	39,918.22	39,432.53	42,099.66
Royalties	396.21	270.09	247.81
Permissions			
E-Book Sales	13.50		24.68
Advertising			
Total Income	43,848.28	45,266.79	48,589.63
Expenses			
Production	5,240.00	4,403.75	5,937.25
Printing	3,568.89	4,863.05	5,773.87
Mail Service	924.34	1,036.53	1,275.03
Issue Mailing Postage	976.42	828.29	616.05
Press Service Fee	17,539.31	18,106.71	19,434.12
Editorial platform (ScholarOne)	2,105.37	1,983.8	1,390.51
Web Hosting/WordPress	51.42	50.8	167.54
Marketing			
Warehouse Fees/Pstg/Storage	12.85	9.63	17.53
Office Postage			
Miscellaneous		65	195
Total Expenses	30,418.60	29,482.74	32,916
Operating Surplus (Deficit)	\$13,429.68	15,784.05	15,673.81

Table 2. Article Downloads and Usage: 2013-2023

Calendar Year	MUSE Article Downloads*	JSTOR Item Requests	EBSCO Full Text Requests	Total Digital
2013	11,213	0	0	11,213
2014	12,259	0	0	12,259
2015	12,261	0	0	12,261
2016	19,762	0	10,518	30,280
2017	26,124	953	17,277	44,354
2018	25,210	18,198	15,499	58,907
2019	20,064	22,951	21,914	64,929
2020	23,408	33,871	34,495	91,774
2021	23,633	38,300	23,552	85,485
2022	21,538	36,877	14,909	73,324
2023	15,774	38,331	15,908	69,014

In 2024, thanks to the work of previous co-editors Selima Sultana and Paul Knapp, who initiated the process, *Southeastern Geographer* was finally assigned an impact factor from Clarivate. Our initial one-year impact factor, as of 2023, is 0.6, with a five-year impact factor of 0.7. We rank 119 of 171 journals indexed by Clarivate. This represents a strong starting point, considering that this is our initial impact factor. One of our primary objectives will be to build on this foundation and increase this impact factor over the next three years. By building on the journal's reputation as *the* preeminent journal for Southern geography, while expanding our reach, we believe that the prospects are bright. In fact, the institution of early release articles provides an important means of enhancing this impact factor immediately.

In 2023, we first piloted early release articles in conjunction with Project MUSE and UNC Press. In 2024, we were able to fully integrate early release in our workflow, and updated [author guidelines](#) to streamline this process and reflect other recent changes. Manuscripts are now formatted and published as early release articles as soon as they are accepted. This means that most articles are now available 2-3 *months* before they appear in a numbered volume. They are assigned a DOI that is subsequently associated with the finalized, numbered volume, insuring consistency in citations. These remain available in the "[Early Release](#)" section at the top of the Project Muse site until they are formally released in their assigned issue. Since Early Release articles are available well before their publication in a numbered volume, this provides an excellent means of increasing the visibility, and citations, of articles in their first year. We also anticipate that this will make the journal an even more attractive venue for publication, particularly in the era of for-profit journals that offer a speedy turnaround at the expense of scholarly reputability and the authors' own pocketbook.

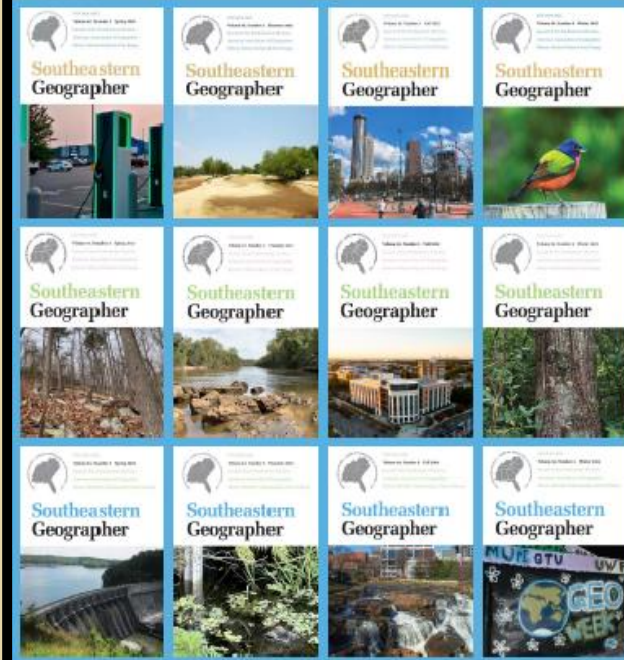
As editors, we are dedicated to the scholarly mission of *Southeastern Geographer* as a peer-reviewed flagship journal of Geography in the South, and we strive to remain a preeminent journal for scholars at all stages of their career. We pride ourselves in serving as a venue for work by early-career scholars, as well as prominent and well-established scholars within and beyond the SEDAAG region. We are grateful for the work and commitment of all our authors, reviewers, and readers; to UNC Press for their ongoing partnership; and most importantly, to the leadership and membership of SEDAAG for their continued support and commitment to our journal. We look forward to working with the entire *Southeastern Geographer* community to grow the journal in the coming years.



Southeastern Geographer

A journal of southern geography from the Southeastern Division of the American Association of Geographers

2024 Report from the Editors of *Southeastern Geographer*



Annual Meeting of SEDAAG
Greenville, South Carolina



segedit@geosci.msstate.edu

Editorial Team

Editors

- Shrinidhi Ambinakudige & Brian Williams
Mississippi State University

Book Review Editor

- Madhuri Sharma, *University of Tennessee*

Editorial Assistant

- Yuria Sloane, *Mississippi State University*



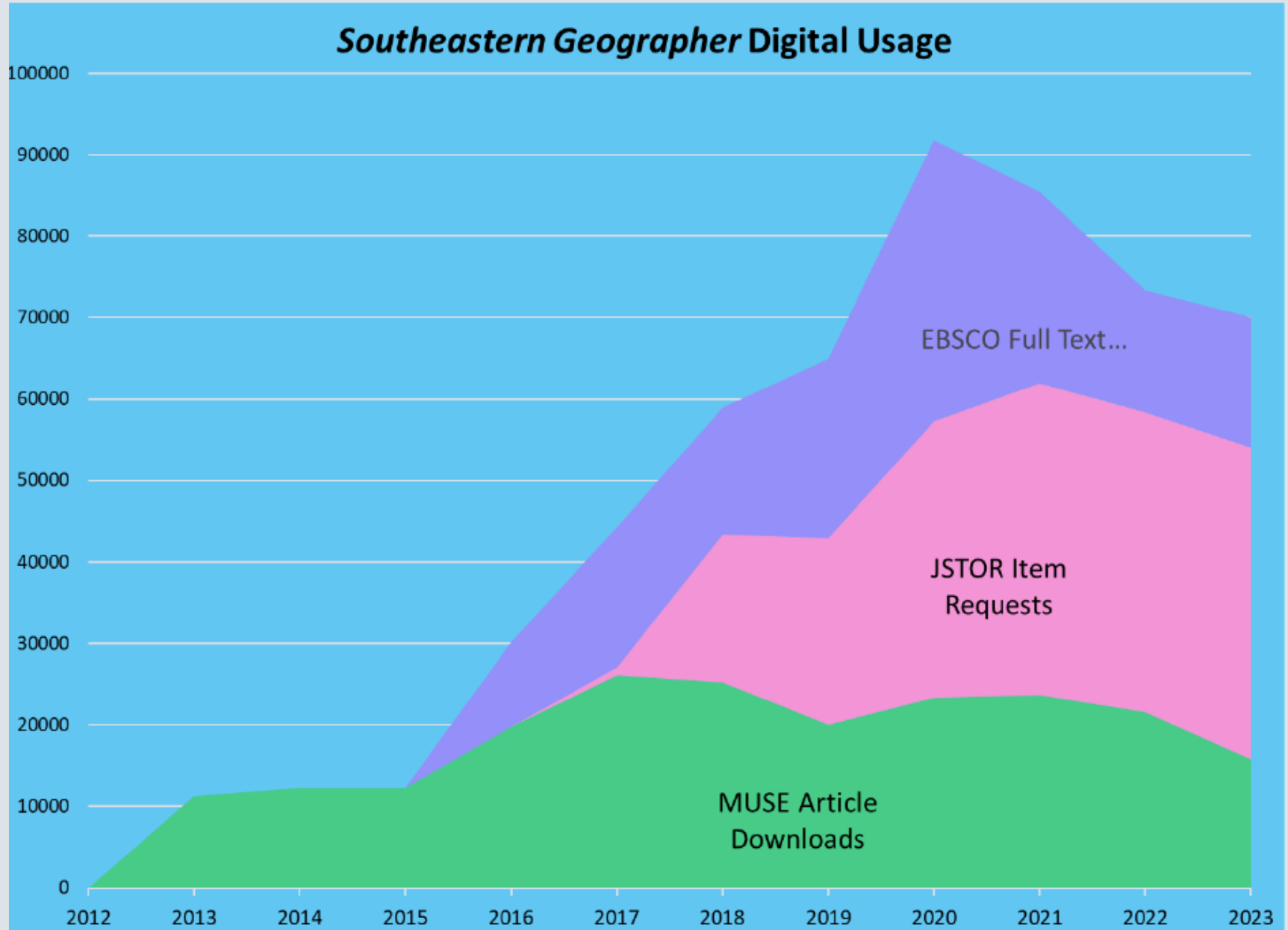
*A thank you to Nishat Shermin and Brannan Tisdale,
our editorial assistants for 2023-2024*

Articles Downloads and Usage

Calendar Year	MUSE Article Downloads*	JSTOR Item Requests	EBSCO Full Text Requests	Total Digital
2013	11,213	0	0	11,213
2014	12,259	0	0	12,259
2015	12,261	0	0	12,261
2016	19,762	0	10,518	30,280
2017	26,124	953	17,277	44,354
2018	25,210	18,198	15,499	58,907
2019	20,064	22,951	21,914	64,929
2020	23,408	33,871	34,495	91,774
2021	23,633	38,300	23,552	85,485
2022	21,538	36,877	14,909	73,324
2023	15,774	38,331	15,908	69,014

Note that these stats compare different kinds of usage. MUSE “article downloads” count only downloads, while EBSCO “text requests” and JSTOR “item requests” include both views and downloads.

Articles Downloads and Usage



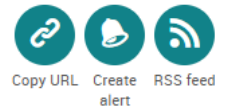
The journal continues to operate at a surplus

	Vol. 63.3, 63.4, 64.1 & 64.2	Vol. 62.3, 62.4, 63.1 & 63.2	Vol. 61.3, 61.4, 62.1, & 62.2
	4 Issues	4 Issues	4 Issues
<u>Income</u>			
Subscription Sales	3,520.35	5,564.17	6,217.48
Digital Revenue	39,918.22	39,432.53	42,099.66
Royalties	396.21	270.09	247.81
Permissions			
E-Book Sales	13.50		24.68
Advertising			
Total Income	43,848.28	45,266.79	48,589.63
<u>Expenses</u>			
Production	5,240.00	4,403.75	5,937.25
Printing	3,568.89	4,863.05	5,773.87
Mail Service	924.34	1036.53	1275.03
Issue Mailing Postage	976.42	828.29	616.05
Press Service Fee	17,539.31	18,106.71	19,434.12
Editorial platform (ScholarOne)	2,105.37	1,983.8	1,390.51
Web Hosting/WordPress	51.42	50.8	167.54
Marketing			
Warehouse Fees/Pstg/Storage	12.85	9.63	17.53
Office Postage			
Miscellaneous		65	195
Total Expenses	30,418.60	29,482.74	32,916
Operating Surplus (Deficit)	\$13429.68	15,784.05	15,673.81

Southeastern Geographer now has an impact factor

Southeastern Geographer

Chapel Hill: The University of North Carolina Press



Scholarly Journal

[Advanced Search](#)

Peer reviewed.

Full text coverage May 2004 (Vol. 44, no. 1) - present (delayed 1 year)

Citation/Abstract coverage May 2004 (Vol. 44, no. 1) - present

[More publication information](#) ▾



Journal Impact Factor		Journal Citation Indicator
Use this to help evaluate the citation impact of this journal.		
2023	FIVE YEAR	
0.6	0.7	
JCR CATEGORY (1 of 1)	JIF RANK	JIF QUARTILE
GEOGRAPHY	119/171	Q3
View more on Journal Citation Reports		? What's this?

Early Release articles

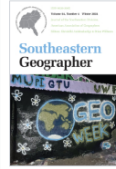
- Manuscripts are now formatted and published as early release articles as soon as they are accepted.
- This means that most articles are now available *2-3 months* before they appear in a numbered volume.
- They are assigned a DOI that is subsequently associated with the finalized, numbered volume, insuring consistency in citations.
- These remain available in the “Early Release” section at the top of the Project Muse site until they are formally released in their assigned issue.

In this Issue

Access Early Release Articles

Issue

Viewed | Save | Get Access



Additional Information

Table of Contents

Representation of the American South in North American Regional Geography Textbooks in the Twenty-first Century
Paul N. McDaniel
DOI: <https://doi.org/10.1353/sgo.0.a934475>
View Summary | Download | Save | Get Access

“We need more!”: Mexican Immigrants’ Tacit Knowledge and Mississippi’s Beef Cattle Industry
Juan Quinonez Zepeda
DOI: <https://doi.org/10.1353/sgo.0.a934476>
View Summary | Download | Save | Get Access

Citrus Production Losses in Florida Due to Hurricane Ian: Estimates from the Forecast-Production Gap
Courtney Cameron
DOI: <https://doi.org/10.1353/sgo.0.a937032>
View Summary | Download | Save | Get Access

Homeless Republicans: Haley Voters and the 2024 Presidential Primary in Coastal South Carolina
Kylie S. Davis
DOI: <https://doi.org/10.1353/sgo.0.a944196>
View Summary | Download | Save | Get Access

Does the Future Look Irrigated? Evaluating the Likelihood of Irrigation Adoption Within Alabama
Ruchie Pathak, Nicholas R. Magliocco, Mukesh Kumar, Lakendra Rathore, Hamid Moradkhani
DOI: <https://doi.org/10.1353/sgo.0.a944197>
View Summary | Download | Save | Get Access

Manuscripts first submitted November 2023-October 2024

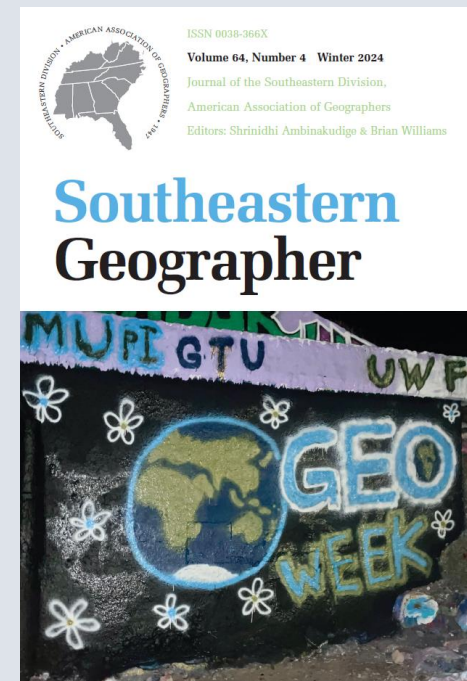
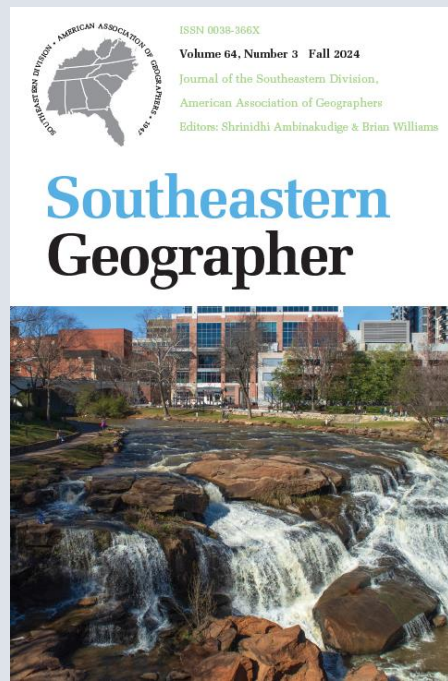
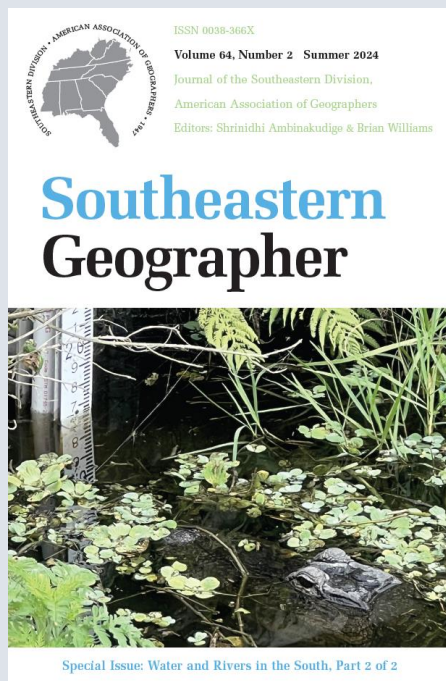
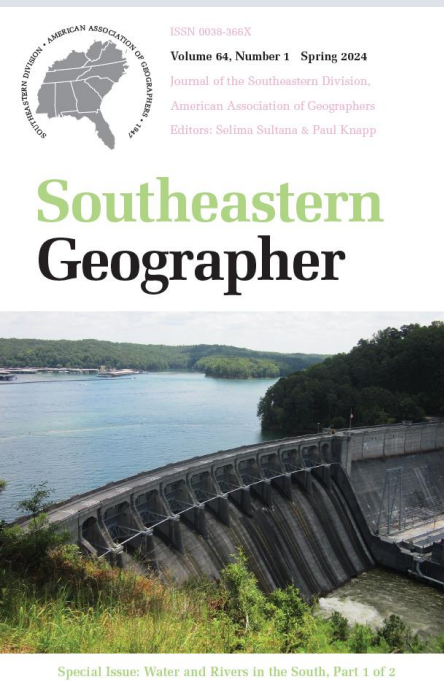
Final Decision	Number of Manuscripts	Percentage of Total
Accept	12	63%
Reject	3	16%
In Review or Awaiting Revisions	4	21%
Total	19	100%

Accepted and pending manuscripts first submitted between November 2023-October 2024

Final Decision	Number of Manuscripts	Percentage of Total
Major Revisions	12	75%
Minor Revisions	4	25%
Immediate Acceptance	0	0%
Total	16	100%

2024 Issues

- 64 (1) : 6 articles & 1 Review (Special Issue)
- 64 (2) : 5 articles & 3 Reviews (Special Issue)
- 64 (3) : 4 articles, 1 Geographical Note, & 1 Review
- 64 (4) : 4 articles & 1 Review (forthcoming)



Coming Up: Volume 65, Number 2 *Spring 2025*

COVER ART

Appalachian Bogs: Beauty and Biodiversity

Peter Forister

PART I: PAPERS

Representation of the American South in North American Regional Geography Textbooks in the Twenty-First Century *Paul N. McDaniel*

“We need more!”: Mexican Immigrants’ Tacit Knowledge and Mississippi’s Beef Cattle Industry

Juan Quinonez Zepeda

Citrus Production Losses in Florida Due to Hurricane Ian: Estimates from the Forecast-Production Gap

Cortney Cameron

Does the Future Look Irrigated? Evaluating the Likelihood of Irrigation Adoption Within Alabama

Ruchie Pathak, Nicholas R. Magliocca, Mukesh Kumar, Lokendra Rathore, Hamid Moradkhani

Homeless Republicans: Haley Voters and the 2024 Presidential Primary in Coastal South Carolina

Kyle S. Davis

PART II: REVIEWS

Excavating the Lost Colony Mystery: The Map, the Search, The Discovery

Eric Klingelhofer (editor).

Reviewed by H  l  ne Ducros

The Vital Dead: Making Meaning, Identity, and Community through Cemeteries

Alison Bell
Reviewed by Amy R. Sumpter



November 22, 2024

16. Geography Bowl Report 2024 SEDAAG

Submitted by Dr. Heidi Lannon, Santa Fe College

Dear SEDAAG Members:

It is my pleasure to provide you with an update from the AAG Council, as your AAG Southeastern Division Regional Councilor, and Chair of Regional Councilors.

Annual Conference

The Hawaii meeting made approximal \$115,000 in profit, although the virtual component of the meeting lost money, because there were not enough participants to cover costs. The Detroit Conference registration is going well and is currently at the same level of registration as the Denver conference.

2025 – Detroit, 2026 – San Francisco, 2027 – New York City

The Climate Action Committee provided input on options for the 2028 meeting. The Council adopted a motion to make the 2028 meeting hybrid with regional nodes. In conjunction with this action two additional motions were proposed:

Do you agree that AAG will seek to become a climate leader by scaling up to mitigate annual meeting climate impacts by working with academic societies, hub partners, inspire industry-level change, and engage on-going communication with members and the public?

Do you agree that AAG will seek conference locations that prioritize fair labor, food waste reduction, energy efficiency, and that minimizes climate impacts overall?

These motions passed unanimously

Finances

AAG Staff has been further reduced by 7 through restructuring and retirements. The current organizational deficit is approximately \$554,000. A successful conference, grants, the dues increase, and changes in royalties from journals will assist with this. The AAG still enjoys a large but restricted endowment, funded by donations and the proceeds from selling the building. The current deficit is a function of COVID impacts to conferences and diversification of revenue beyond Conference profits is being considered. A goal for operating fund reserve of at least \$1 million was adopted by the Council.

AAG has been awarded a GAIA NSF grant for helping departments better support foreign-born women faculty. This project is led by Principal Investigator Jieun Lee and the AAG will recruit departments.

Gen A committee

Vice President Bill Mosley of Macalister College has proposed an initiative to work on the importance of the emphasis of undergraduate Geography majors. The second meeting on the committee was held on November 22. His quote was “you gotta mind the store, you gotta know where the future is.” He identified 3 potential approaches:

- What are pathways into geography? 263,000 students take AP HG in high school. How can we reach them?

November 22, 2024

- Which departments are growing and increasing majors? Not just in the U.S. Where is geography flourishing, and what can we learn from U.S. departments and abroad
- How does geography fare within the higher education system – with a special interest in community-engaged research

Truth and Reconciliations Project

AAG is initiating a Truth and Reconciliations Project with objectives of self-criticism and transparency. By acknowledging and detailing the role that AAG has aided and supporting harmful ideas and practices in the past, the AAG will establish the potential for reconciliation with that past.

Memorials

There will be a Memorial for Janice Monk in Annals. It was announced that Stanley Bruun passed in October 2024.

Regional Reports

Each Regional Representative was asked to provide a report to the AAG Council for our November 15 meeting. These are attached below. There has been discussion about consolidation of less active Regions. It was clarified that this would be only at the request of the Regions and not an AAG initiative.

Fellows

The 2005 Class of AAG Fellow awardees have been determined and will be announced. There are 6 from the SEDAAG Region

Committee Volunteers

As Regional Councilor Chair, I work with the National Council Chair, Secretary and Treasurer on the Membership Engagement Committee. Our role is to persuade members to run for Nominating and Honors Committees, and to ensure a broad representation of members on the Standing Committees and Task forces. . There are 39 Committees - 2 Elected, 1 Appointed, 12 Ad Hoc Task Forces and Initiatives, 24 standing committees. To date there are Members from 2 SEDAAG institutions running for Honors and 3 running for the Nominating Committee. The list is attached below. If anyone would like to be nominated, please let me know.

ACTION FOR CONSIDERATION

The student representative position in the Regional Divisions varies widely, with some elected, some appointed and some Regions without student representation. The AAG Council was led in a discussion of this issue by Student Representative, Alyson Mabie. The Council has requested that Regional Divisions consider amending bylaws to elect student representatives. SEDAAG currently has an appointed student representative.

Section 5, D. Student Representative: A Student Representative shall be appointed (by the Executive Committee) to the Steering Committee for a one-year term, to begin at the close of the Annual Business Meeting. The Student shall be a graduate student member of the Division at the time of appointment. Appointment of the Student Representative will rotate annually among the ten member states of SEDAAG. <https://sedaag.org/membership/sedaag-by-laws/>

November 22, 2024

Please note this summary is based on minutes and recollections of Council meetings. Any inaccuracies included are my own.

Respectfully Submitted,

Heidi J. L. Lannon, Ph. D.

[Councilor, American Association of Geographers](#)

Professor of Geography

352-381-7082

3000 NW 83rd Street, L 250

Gainesville, FL 32606



Attachments:

AAG Election Slate of Candidates, Honors and Nominating

AAG Council Vacancies and Candidates

Regional Division Reports, October 2024

November 22, 2024

Slate of Candidates for the 2025 AAG Election*
Selected by the Committee on Committees

Honors Committee and Nominating Committee Vacancies

Honors A (1 vacancy)

- Barbara Hildebrant, Educational Testing Service (ETS) (*Retired*)
- Joshua Inwood, Pennsylvania State University
- Cindi Katz, City University of New York

Honors B (2 vacancies)

- Marcellus Caldas, Kansas State University
- Chandana Mitra, Auburn University
- Joann Mossa, University of Florida
- Mark Rosenberg, Queens University

Nominating Committee (5 vacancies)

- Sharon Cobb, University of North Florida
- Jean Taylor Ellis, University of South Carolina
- Caroline Faria, The University of Texas at Austin
- Amy Hessel, West Virginia University
- Wendy Jepson, Texas A&M University
- Frank McGilligan, Dartmouth College
- Jay Newberry, Binghamton University (State University of New York)
- Jane Read, Syracuse University
- May Yuan, The University of Texas at Dallas

November 22, 2024

Slate of Candidates for the 2025 AAG Election
Selected by the AAG Nominating Committee

AAG Council Vacancies

President (1 vacancy)

- William Moseley, Macalester College (sitting Vice President, runs unopposed)

Vice President (1 vacancy)

- Anne Chin, Florida State University
- Deborah Martin, Clark University
- Jerry Mitchell, University of South Carolina
- Sara Smith, University of North Carolina at Chapel Hill

National Councilor (2 vacancies)

- Daniel Block, Chicago State University
- Heejun Chang, Portland State University
- Andrew Curley, University of Arizona
- Amy Frazier, University of California, Santa Barbara
- Katherine Hankins, Georgia State University
- Eden Kinkaid, University of Delaware
- Jason Vanhorn, Calvin University
- Joe Weber, University of Alabama

International Councilor (1 vacancy)

- Anindita Datta, University of Delhi (India)
- Britta Ricker, Utrecht University (The Netherlands)

November 22, 2024

SEDAAG Regional Division Report

***Name**

Heidi Lannon
Email

heidi.lannon@sfcollge.edu
Regional Division Name

FL
Date

2024-10-17

Share a general status of the region:

SEDAAG continues to thrive. We currently have 312 members from the following locations: 2 WY 7 WV 1 WI 1 VT 58 VA 2 TX 36 TN 22 SC 1 RI 1 PA 1 OK 1 OH 41 NC 8 MS 2 MO 2 MI 2 LA 12 KY 3 IN 1 IL 1 ID 41 GA 30 FL 1 DC 1 CO 1 AZ 2 AR 27 AL 2 Canada 1 Netherlands 1 Other We enjoy the support of many Departments at all levels, from 2-year Colleges to R1 institutions. We have competitive elections that we feel indicate an engaged membership, interested in leadership. Vice President - 3 candidates Secretary - 3 candidates Georgia State Rep - 2 candidates Mississippi State Rep- 1 candidate North Carolina State Rep- 4 candidates Tennessee State Rep - 5 candidates Virginia State Rep - 3 candidates <https://sedaag.org/sedaag-officers/>

Describe the outcome or prognosis of the most recent meeting for your regional division:

The 2024 SEDAAG meeting will be held in Greenville, SC and hosted by Furman University. The sign up has been so robust that additional meeting rooms have had to be secured, and there are 50 more abstracts than we had this time last year. We are looking forward to having Past President Rebecca Lave at the meeting 2023 SEDAAG Meeting Highlights 25 Paper Sessions · 138 paper submissions 4 Panel Sessions 3 Poster Sessions (Honors, Undergraduate/Honors, General) · General Poster Submissions: 31 · Graduate Poster Submissions: 23 · Undergraduate and Undergraduate Honors Competition Posters: 37

Please list any issues that regional leadership would like Council to be aware of:

(No response)

Please list any issues in the region that Council should discuss:

We are aware that at the last Council meeting Regional group numbers were published and understand these figures were from a presentation by the Regional Specialty Group. Please note our membership numbers above. We wonder about the source of the numbers of members by Region. The consensus is that we are much bigger than our Pacific Coast brethren. There is an acknowledgement that we do have members that are not AAG members and that there are AAG members living in the Southeast region that are not members of SEDAAG.

November 22, 2024

November 22, 2024

APCG Regional Division Report

***Name**

Dydia DeLyser
 Email

dydia@fullerton.edu

Regional Division Name

Pacific Coast / APCG

Date

2024-10-21

Share a general status of the region:

The APCG continues to be a vibrant region with an engaged membership from a wide array of institutions across the region. At each annual meeting we make our leadership transition. Fernando Bosco has become Past President, Elena Gievental has become President, Lily House-Peters has become Vice President. Bob Richardson remains Treasurer, Terry Young remains Secretary, and Dydia DeLyser remains Regional Councilor. Our next election will include a proposition asking members if they support a student member of our governing body. The APCG's journal, the Yearbook of the APCG, continues to flourish under the leadership of editor Craig Revels and volume 86 will appear in October. This forthcoming volume continues the APCG's emphasis on nurturing emerging scholars and early-career faculty, and includes faculty-directed undergraduate research and an article from the second Janice Monk Early Career Faculty Research Award recipient. It also maintains its role as the official record of the annual meetings of the APCG, with abstracts, awards, and other materials from the October 2023 meeting in Ventura, California. The journal is published by the University of Hawai'i Press and royalties from UH Press, Project MUSE, and JSTOR remain primary sources of financing for APCG activities (see above). To increase access, and reduce costs and carbon the journal has been published digitally since 2023. Early results show an increase of access and royalties. The APCG's newsletter, the Pacifica is seeking an editor who will join the leadership of the APCG in keeping our vibrant region connected.

Describe the outcome or prognosis of the most recent meeting for your regional division:

The APCG hosted our 2024 conference in person at Cal Poly Humboldt in Arcata, California with 128 attendees. Of those, 71 were students, and one was Gary Langham who we were very pleased to welcome. We began with three field trips showcasing the magnificent local natural and historical attractions (bird walking/wildlife sanctuary, historic Eureka with boat tour, and redwoods/beaches). While the conference was in person, we hosted one hybrid session to honor APCG legend Jan Monk and everything she did for so many geographers worldwide. With the generous support of specific sponsors and our regular funds we were able to offer 27 student travel grants, 6 awards for student papers, 4 named awards, 16 banquet dinners for first-time student attendees, and we funded the travel of one Independent Scholar who presented. In total we offered member-participants in our annual meeting \$14,170 and the APCG remains in the black. We thank key organizers Rosemary Sherriff and Nick Perdue who led a flawless meeting with smoothly organized sessions, great catering, and perfect weather.

Please list any issues that regional leadership would like Council to be aware of:

Some members continue to voice concerns, widespread across AAG, about the absence of participation from most of the R1 departments in the region. Following AAG Council discussion about student membership on regional councils, the APCG Executive Committee voted to place an item on our Spring ballot asking if the membership supports having a student council member.

Please list any issues in the region that Council should discuss:

(No response)

November 22, 2024

MAD Regional Division Report

***Name**

Jeremy Tasch
 Email

JTasch@towson.edu

Regional Division Name

MAD-AAG

Date

2024-11-01

Share a general status of the region:

MAD continues its efforts to navigate the region's specificities, on one hand, and its regional commonalities, on the other hand, better to uncover and meet its members' needs and expectations. MAD's clearest identifiable population, professional, and geographic center is DC and its nearby spillover locales. This hub is a dynamic heart of competing events, meetings, conferences, and opportunities for academic, professional, and civic networking and engagement. Consequently, among MAD's challenges is to identify collaborations that leverage the vibrancy of the DC region in a manner that addresses possible gaps MAD can fill for its members. Despite the geographic diminutive geographic extent of the MAD Region, transportation options for in-person gatherings are limited for many of its members to private vehicles and typically require overnight stays. MAD continues to rebuild a more cohesive community in its third year of holding a post-COVID in-person annual meeting.

Describe the outcome or prognosis of the most recent meeting for your regional division:

MAD-AAG's most significant success for 2023-2024 was the co-planning, organization, and hosting of the October 2023 joint REP-MAD conference, hosted by George Washington University. The three-day conference, the third REP-MAD co-organized conference since 2020, attracted nearly 300 attendees and included paper presentations, panel discussions, and opportunities for students, faculty, and community members to interact and network. Thirty-eight attendees registered self-identified as "MAD-Members" and 42 attendees identified as members of the "MAD Region." Strategizing opportunities to attract more students and to reach a broader constituency, in November 2023 MAD also joined the Pennsylvania Geographical Society (PGS) for a second joint PGS-MAD meeting, hosted by Salisbury University. MAD used this meeting to organize a "Careers in Geography" panel, including six discussants, alumni from regional geography programs. The annual MAD Geobowl was also held at Salisbury, and the Bowl winners formed the core of the MADhatters, MAD's Bowl team, which competed in Hawaii, 2024. REP-MAD remains grateful to its sponsors, including the AAG, NSF, GWU, Morgan, Towson, and several other institutions and individuals. The 2024 MAD meeting is scheduled for November 22, 2024, and will highlight two keynote speakers: Gary Langham, AAG, and Nicole Nguyen, University of Illinois, Chicago.

Please list any issues that regional leadership would like Council to be aware of:

The MAD Region created a Website and Facebook page to facilitate community exchange and enhance its social media presence. This effort requires sustained attention. A board member who agreed to take on the task of building and strengthening this effort subsequently left the region. The student board member, who anticipated helping to pick up the slack, graduated summer 2024 and remains focused on post-graduation matters. These sorts of issues are not endemic to MAD. Remaining MAD Board members anticipate identifying and nominating replacements at the fall 2024 meeting.

Please list any issues in the region that Council should discuss:

There are currently no MAD-matters that rise to the level of Council discussion.

November 22, 2024

NESTVAL Regional Division Report

***Name**

Steven Silvern

Email

ssilvern@salemstate.edu

Regional Division Name

Massachusetts

Date

2024-11-01

Share a general status of the region:

Geography appears to be holding its own in our region. At our recent annual meeting there were no reports of the demise of any geography programs. The mood was neither negative nor positive. There was general discussion of structural problems plaguing higher education in the region and a focus on the impacts of declining enrollments and fiscal issues mostly affecting the regional public university and smaller programs. Our Vermont Rep, Scott Rober, noted the successful mergers of Geography with Geology/Geosciences at UVM and Geography with Anthro/Archaeology at Vermont State Univ. Next annual conference will be held at Bridgewater State University.

Describe the outcome or prognosis of the most recent meeting for your regional division:

The NESTVAL annual meeting was held October 25-26 at Westfield State University. The meeting was well attended with over 100 faculty and student registrations. The conference had 7 concurrent paper sessions and one poster session. The keynote address by Ray Bradley (UMass Amherst) entitled "The New Normal: climate that we'll have to get used to." The Geography Bowl was fun and 4 teams participated (Umass, Salem State, Westfield State, UConn). The E-Board will have a number of openings this coming Spring and NESTVAL is still seeking a permanent editor for its annual journal, The Northeastern Geographer. NESTVAL faces a challenge in recruiting early career faculty to these leadership positions with the organization.

Please list any issues that regional leadership would like Council to be aware of:

The following were discussed at our business meeting and members asked they be brought to Council and AAG staff attention: - AAG should expand and build upon the healthy departments program - need help gaining recognition of AP geography courses - would like assistance in building alliances across programs - some question on whether AAG could work with NCGE or AGS in how it conducts programs and annual conferences - can they be combined at all? - would like to see a session at AAG on combining/redistricting of regions and building alliances across regions and programs

Please list any issues in the region that Council should discuss:

Tad Martin notified NESTVAL that his father, Geoffrey Martin, passed away on October 7, 2024. Martin was along-time member of the AAG and a participant in NESTVAL. For 30 years, Geof was the archivist of the AAG, and when it was decided to move in a digital direction, he was made honorary historian of the Association.

November 22, 2024

Great Plains / Rocky Mountain Regional Division Meeting

***Name**

Rebecca Buller

Email

rbuller2@unl.edu

Regional Division Name

Great Plains/Rocky Mountain

Date

2024-11-01

Share a general status of the region:

GPRM continues in its recent legacy for 1) GPRM identity and interaction to refer to the annual regional meeting, 2) meeting attendance to be largely dependent upon location proximity and institution financial support, 3) meeting attendance to include a higher percentage of students, versus faculty, and 4) a meeting atmosphere of supportive encouragement and mentorship. Regional bylaws allow for other activities and functionalities, such as a journal. If and when membership would like to add and alter functionalities, the community, Bylaws, and leadership would certainly encourage, equip, and enable such majority's initiatives.

Describe the outcome or prognosis of the most recent meeting for your regional division:

The GPRM 2024 meeting, co-hosted by Utah Valley University (UVU) (i.e., co-chair Hilary Hungerford) and Brigham Young University (BYU) (i.e., co-chair Daniel Olsen), on Friday, October 25 and Saturday, October 26, was a vibrant, extremely well-attended conference. Although, of course, most attendees were from nearby locations in Utah and Colorado, a strong presence came from the region's other side, including a strong presence from the University of Nebraska at Omaha and South Dakota State University (SDSU), who drove! Beautiful sunny, fall weather in the mountains accented Friday's incredible field trip options: "Salt Lake City: from the beginnings to the future" and "Utah Lake: from the mountains to the valley." Strong sponsorship-- from Utah State University, the University of Utah, AAG, UVU, and BYU-- strengthened offerings. Graduate students, undergraduate students, faculty, administrators, and the AAG vice president all collectively contributed to a robust, optimistic, forward-thinking Saturday conference. ---

----- For more details, see co-chairs Hungerford and Olsen's post-conference email message below. Greetings Geographers! Wow what a wonderful weekend we had here in Utah! Thanks to all who joined us. Thanks for your patience as we tabulated the scores for our paper and poster competitions. The student papers and posters are always a highlight of the year, and this year the quality was outstanding. We are pleased to announce the winners for this year GPRM Division meeting 2024. Student Poster competition: 1st Place: Apili, Belinda; Zhang, Hankui; Maimaitijiang, Maitiniyazi - South Dakota State University. "Remote Sensing - Based Mapping and Analysis of Winter Cover Crop Adoption for Sustainable Agriculture in Minnehaha County" 2nd Place: Subedi, Santosh; Maimaitijiang, Maitiniyazi; Zhang, Xiaoyang - South Dakota State University. "AI-assisted large-scale crop damage mapping using optical and SAR satellite data fusion" * 3rd Place: Irshad, Muhammad Ali; Maimaitijiang, Maitiniyazi; Millett, Bruce; Janjua, Ubaid; Kovács, Péter - South Dakota State University. "Multiscale remote sensing data fusion for crop canopy cover mapping using deep learning" A clean sweep from South Dakota State University! Excellent work SDSU! Graduate Student Paper competition: 1st Place: Sharma, Anshul Rai - University of Colorado Boulder. "Necropolitics of Sanitation: Manual Scavengers as Modern Slaves" 2nd Place: Green, Ashley - University of Utah. "Curating Place Identity: Texas State Parks and Place-based Narratives" 3rd Place: Hart-Thompson, Hayes; Bowman, Grace; Sagehorn, Mallory; Miller, Matthew; Savard, Grace; Finlay, Jessica - University of Colorado, Boulder. "No Places to Gather: Enduring Impacts to Neighborhood Perceptions and Engagement Following Since the Onset of COVID-19" Best Undergraduate Student Paper: Nighgroh, Mia - University of Nebraska Omaha. "The Spatial Power of Miss Eyes Gossip Column: Unveiling Debauchery in a 1930s Black Newspaper" The GeoBowl competition was once again exciting and a nail-biting competition. Congratulations to Brigham Young University for having the winning team for the GeoBowl! Congratulations to our top scoring students that

November 22, 2024

will represent GPRM at the National Competition (in alphabetical order): Logan Bolan from Utah State Sophia Budge from BYU Hayden Busha from UNCO Alex Guglielmo from BYU Elijah Manwill from Utah State Tyler Schaumann from BYU For the paper/poster winners and the GeoBowl team members, please be on the lookout for an email from us in the coming weeks regarding your awards. Most of all this weekend was a reminder of how wonderful a disciplinary community we have in Geography in the Great Plains / Rocky Mountain region. There was such a diversity in presentation topics and methodology, which is a real strength of geography as a discipline. We are so grateful to have learned from you all this weekend. It was so great to meet students and faculty from across the region. Many thanks to Vice-President of AAG Dr. Bill Moseley for an excellent keynote and for helping with the GeoBowl! We welcome any feedback about the conference and will be sure to pass along our reflections to the next hosts, University of Nebraska – Omaha. Looking forward to seeing you at the national meeting in Detroit in March or next year's GPRM meeting in Omaha! Cheers, Hilary Hungerford and Daniel Olsen
Please list any issues that regional leadership would like Council to be aware of:

-hosting annual regional meetings is a heavy, sustained, sometimes risky, lift for the volunteers
+leadership is grateful for the various resources and supports that AAG headquarters and staff provide
Please list any issues in the region that Council should discuss:

Currently unaware of any such issues. If this changes, will apprise Council.

November 22, 2024

ELDAAG Regional Division Meeting

***Name**

Mike DeVivo

Email

mdevivo@grcc.edu

Regional Division Name

ELDAAG

Date

2024-11-01

Share a general status of the region:

Like other regions in the US, academic geography in the ELDAAG is characterized by uneven levels of prosperity. Of the 24 geography programs with contacts available, 12 program directors or chairs responded to email queries concerning the status of geography at their institutions. The respondents represented 2 private institutions, 2 community colleges, and 8 regional universities. Unfortunately, none of the 4 departments awarding geography PhDs responded, so the status of geography in those doctoral programs is unknown. In any event, responses from the regional universities indicate that in some, our discipline is in a precarious situation, whereas in others, its survival is contingent upon an "environmental" moniker. Still, in others, GIS concentrations appear to foster some stability. The private institutions show solid evidence of preparing undergraduates for geography graduate programs; but the absence of public funding makes things difficult. Two interesting bright spots must be mentioned. Ben Ofori-Amoah at Western Michigan University reported on an innovative strategy his program has implemented, which has resulted in an MOU that results in academic credit granted to veterans in certain military occupational specialties for some GIS and regional courses. This practice ought to be considered in other institutions where veterans make up significant student numbers. Further, at St. Clair County Community College, Cadey Korson demonstrates a high level of commitment to tasking students to go out into the field and explore landscapes, both cultural and physical. Indeed, it is fieldwork that so often has captivated many to pursue the geographer's craft, yet it is no longer considered an imperative. Maybe it is time to address the importance of field trips in undergraduate courses. Lastly, the AAG award of funds for a Distinguished Service Award shows promise in enhancing the status of the discipline. Minxuan Lan (ELDAAG chair) and Sandy Wong (ELDAAG Secretary-Treasurer) worked tirelessly to make it happen.

Describe the outcome or prognosis of the most recent meeting for your regional division:

The combined ELDAAG/WLDAAG annual meeting took place in Kalamazoo at Western Michigan University, and it offered a forum for academic geographers from across the two regions to convene in a geographically suitable setting. AAG VP Moseley met with department chairs at a luncheon; all responded favorably to his plans for a task force devoted to undergraduate education, and when he spoke at the awards banquet, his words were greeted with applause. That being said, concerns were expressed about the cost of the AAG Annual Meeting in Detroit; although it was explained that mitigating climate change and embracing social justice (e.g., securing conference hotels that employ organized labor) are some reasons for higher costs, time will tell if further concerns are raised. In any event, the 112 ELDAAG attendees represented 13 colleges and universities; 25% came from the host institution and 65% happened to be students. For sure, sponsoring forums for students to showcase their research is a very important initiative, and one that must be continued, for it shows them that the AAG is committed to their success, and their success is an essentiality for the discipline's prosperity. Incidentally, the leaders of the division (especially Minxuan and Sandy) deserve special recognition, for their efforts to secure funds from the AAG proved to be successful in subsidizing the entire registration fees for all students who presented papers or posters.

Please list any issues that regional leadership would like Council to be aware of:

More than one department chair responded that assistance with marketing geography and demonstrating its value as a prospective career path would be extremely helpful. It also might be advantageous for the

November 22, 2024

AAG executive director and AAG president to offer congratulatory notes (via snail mail) to upper-level administrative leaders (e.g., presidents, provosts) with reference to acknowledging faculty accomplishments and awards, and to also express thanks for hosting regional division meetings. Please list any issues in the region that Council should discuss:

(No response)

Middle States Regional Division Report

We held our 2024 annual meeting on Nov 1 and 2 at Westchester University in Westchester, PA. The conference hosted more than 150 guests, and featured 13 paper sessions and two poster sessions. Awards were given for graduate and undergraduate papers. Poster competitions were also held and awards given for submissions from graduate, undergraduate, and high school students. We have begun our search for our next Secretary/Treasurer, who will begin next year.

During the Fall board meeting, we also discussed the future of our journal, the Middle States Geographer, which has been struggling in recent years despite outstanding leadership from editors Adam Kalkstein and Paul Marr. Adam and Paul would like to step away from the journal, and the board considered options for their replacement, including the possibility of forming an editorial board to assist the editor(s). We have begun the search for potential members of the editorial board and hope to form the journal's board in the coming months.

-

Nate Gabriel, PhD

Associate Teaching Professor

Department of Geography, Rutgers University

November 22, 2024

Southwest Regional Division Report

Following a slight downturn in participation and involvement during and after the pandemic, SWAAG has gradually recovered over the past couple of years. At present, the regional division is generally pretty strong in terms of participants at the annual meeting and enthusiasm among those participants. This year's annual meeting was held October 6-8th, hosted by the Department of Geography and Environmental Studies at Texas State University. The event was held in conjunction with the Applied Geography Conference (AGX). While I never heard the final total of attendees, I believe we ended up with around 250 participants (I'll get a precise number and send that to you asap); organizers estimated that more than half of those may be considered SWAAG attendees (though it is difficult to precisely determine which conference most motivated people to register, as some participants were likely interested in both conferences). In sum, attendance seems to have returned (or be on the way back to) pre-covid numbers. Being a faculty member at the host institution allowed me to receive considerable feedback from faculty, students, and event organizers, and the conference seems to be generally considered a success, an assessment with which I agree. The quality of presentations was reasonably high, there was a general air of enthusiasm, and I was left with the impression that geographers in the region are doing impactful and creative research. I was particularly struck by the growth in critical geography research happening in the region. While still a relatively small subset of the papers presented, critical geography presentations have become a considerably bigger part of SWAAG over the past eight years since I first attended the annual meeting. It was also important to have Dr. Ehrkamp and Dr. RaQuelle at the meeting, providing members with the opportunity to interact with national leadership and staff and learn more about what the AAG is doing, current challenges and opportunities, and so on.

At the business meeting, we discussed the decision reached by Council in September regarding the 2028 Annual Meeting of the AAG. No one present at the business meeting (which was pretty well attended) had any objections to this decision. We also discussed the redistricting idea that came up at the September council meeting; there was little enthusiasm for expanding or changing the SWAAG region's boundaries. However, SWAAG members were pleased that the AAG is interested in exploring ways to help grow and support the regional divisions, and we agreed to continue discussing ways that we can work with the national organization to continue growing.

A significant issue in SWAAG is a persistent one: the majority of attendees come from just a couple of departments, and while we often have participants from a reasonably wide range of institutions in smaller numbers, some of the biggest departments in the region are hardly represented at the conference at all. My understanding is that this issue is not unique to SWAAG, in which case it seems worth exploring ways in which the AAG might work with regional divisions to address the issue. In the case of SWAAG, perhaps this is not a major issue per se, as the annual meeting is consistently relatively well-attended and successful. But it seems like there is much room for growth, if we could encourage greater participation from the bigger departments that do not tend to take part. And it also seems potentially a bit precarious to always count on a small number of departments to supply the lion's share of attendees.

November 22, 2024

Please let me know if I can provide any further insights or information.

All the best,
Eric

Eric Sarmiento, PhD
Associate Professor
Texas State University

Department of Geography and Environmental Studies

Hi Gary,

I drummed up a few more specific figures on SWAAG, courtesy of Ron Hagelman, who led the organizing effort:

1. 300 registrants (this is for both SWAAG and AGX, and includes some free registrations w/sponsorships)
2. 117 faculty/professional attendees, primarily from across the US, but also had a few international guests
3. 141 graduate student attendees (w/ a handful of undergrads in attendance)
4. dozens of university programs were represented (in both conferences)
5. over \$4250 awarded in the student paper/poster competitions; approximately \$12,000 of software license donations to students
6. hosted two full-to-capacity, community-focused field trips; one to the Hill Country and one to downtown San Marcos

All the best,
Eric

Eric Sarmiento, PhD
Associate Professor
Texas State University

November 22, 2024

West Lakes

Hyejin Yoon

The East Lakes/West Lakes Joint Regional Meeting 2024 was hosted by Western Michigan University from Oct. 17 to Oct. 19. Total 120 attendees presented their research in the poster or in the paper sessions. The keynote speaker, Dr. Christopher Boone at Arizona State University addressed 'Sustainable Urbanization for a Just Future'. In addition to this, the regional meeting also included Geography Bowl, Field trip, Gamma Theta Upsilon Initiation, and more. In the business meeting of the West Lakes, the members discussed how more members can attend the West Lakes Regional Meeting, and a host institution for the next meeting in Fall 2025.

November 22, 2024



AAG COMMITTEES AND TASK FORCE
Archives and Association History
Climate Action Task Force
Committee on the Status of Women in Geography
Healthy Departments Committee
International Research & Scholarly Exchange
JEDI Committee
Membership Committee
Publications Committee
AWARDS COMMITTEES
Awards Committee
Fellows Selection Committee
Program Excellence Award Committee
Garrison Award Committee
Best Papers in Geography & Entrepreneurship Award Committee
Globe Book Award Committee
Harm J. de Blij Award Committee
Harold M. Rose Award Committee
Jackson Prize Committee
Marble-Boyle Undergraduate Achievement Award
Marble Fund for Innovative Master's Research
Meridian Book Award Committee
Research Grants Committee
Wilbanks Award Committee



17. IDEAL Committee Report
2024 SEDAAG
Submitted by Dr. Michelle Abee

Committee Members for 2023 – 2024

- **Clay Tucker**, University of Alabama (2022-2024), co-chair
- **Michele Abee**, Bellarmine University (2022-2024), co-chair
- **Zainab Ali**, University of Florida (2022-2024)
- **Timothy Mulrooney**, North Carolina Central University (2023-2025)
- **Travis Bradshaw**, Liberty University (2023-2025)
- **Rafael Harun**, Tennessee State University (2023-2025)

Committee Members rotating off after the conclusion of the 2024 SEDAAG Annual Meeting:

- Clay Tucker
- Michele Abee
- Zainab Ali

Thank you for your service!

IDEAL Committee Year in Review:

- Reviewed results from the 2023 IDEAL survey for new insight
- Completed a draft of the article. Submission to *Southeastern* by the end of the 2024 fall semester.
- The committee reviewed and distributed Annual Meeting Grants from the AAG.
 - The grant allocates \$1,500 for supporting registration costs for SEDAAG 2024 meeting attendees from HBCUs, minority-serving institutions (MSIs), and community colleges in the Southeastern region.
 - We were able to provide funding to all eligible students who applied. 17 total.
 - **Recommendation:** With the understanding that students are serviced first, any remaining funds from this grant should be available to faculty members from HBCUs, MSIs, and community colleges in the Southeastern region.
- Panel idea for Lexington 2025: Navigating the differences between HBCUs, minority-serving institutions (MSIs), and PWIs in Geography.

19. Nominations Committee Report

2024 SEDAAG

Prepared by Jordan Cissell, Assistant Professor at Samford University

In 2024, the SEDAAG Nominations Committee was comprised of Jordan Cissell (Committee Chair, Samford University), Madhuri Sharma (University of Tennessee), and Joyce Clapp, University of North Carolina at Greensboro).

We solicited a total of 21 nominations across 7 officer positions for the 2024 SEDAAG election. We confirmed that all 21 nominees were willing and eligible to be candidates in the election, and we submitted the list of 21 candidates to the SEDAAG Executive Committee on September 17, 2024. The candidates for each position are listed in the table below.

Position and Name	Affiliation
Vice President (3 candidates)	
Ingrid Luffman	East Tennessee State University
Paul McDaniel	Kennesaw State University
Mark Sciuchetti	Jacksonville State University
Secretary (3 candidates)	
Rachael Cofield	Florida State University
Jed DeBruin	Jacksonville State University
Caroline McClure	Georgia State University
Georgia State Rep (2 candidates)	
Richard Milligan	Georgia State University
Munshi Rahman	Georgia Southern University
Mississippi State Rep (1 candidate)	
Kayla Stan	University of Southern Mississippi
North Carolina State Rep (4 candidates)	
Michael Ewers	University of North Carolina at Charlotte
Sarah Jackson	Western Carolina University
Tommy Patterson	North Carolina Agricultural and Technical State University
John Stehlin	University of North Carolina at Greensboro
Tennessee State Rep (5 candidates)	
Alisa Hass	Middle Tennessee State University
Seth Kannarr	University of Tennessee
Matthew Kerr	University of Tennessee
Jack Swab	University of Tennessee
William Tollefson	East Tennessee State University
Virginia State Rep (3 candidates)	
Tom Allen	Old Dominion University
Junghwan Kim	Virginia Tech
Kyle Redican	University of Richmond

20. Education Committee Report

2024 SEDAAG

Submitted by Dr. Jennifer Rahn, Samford University



Date: November 23, 2024

To: Selima Sultana, SEDAAG President

From: Jennifer Rahn, SEDAAG Education Committee Chair

SEDAAG Education Committee Report

In 2024 the SEDAAG Education committee is running its 15th annual Undergraduate Honors Poster Competition. This year there were a total of 38 undergraduate posters, a record number for SEDAAG!! We have so many that we have to have two separate sessions for all the posters. The first session is on Sunday from 4 to 6 pm and it has 18 mostly human geography posters. The second session is on Monday from 7:50 to 9:50 am and it has 19 mostly physical geography posters.

A question for the committee is that these student posters have up to 10 co-authors. This seems a bit excessive (and creates a mess in the program). Is there a way we can limit the number of co-authors? It seems like this is a way for a bunch of folks to get their names in the program.

SEDAAG Education Committee members 2024:

Jennifer Rahn (Chair), Samford University

JLRahn@gmail.com

Margaret "Peggy" Gripshover, Western Kentucky University

mgripsho@utk.edu

Joe Morgan, Jacksonville State University

ljmorgan@jsu.edu

Jackie Gallagher, Mary Washington College

jgallagh@umw.edu

Heidi Lannon, Santa Fe College,

heidi.lannon@sfcollgege.edu

Phillip Schmutz, University of West Florida

pschmutz@uwf.edu

Jonathan Fleming, Samford University

jfleming7@samford.edu

Eric Spears, Columbus State University in Georgia

spears_eric@columbusstate.edu

Paul McDaniel – Kennesaw State University

A handwritten signature in black ink that reads "Jennifer Rahn". The signature is written in a cursive, flowing style.

Jennifer Rahn, PhD.

Associate Professor of Geography

Samford University, 800 Lakeshore Drive, Birmingham, AL 35229

JLRahn@samford.edu - Cell – 205-215-2582