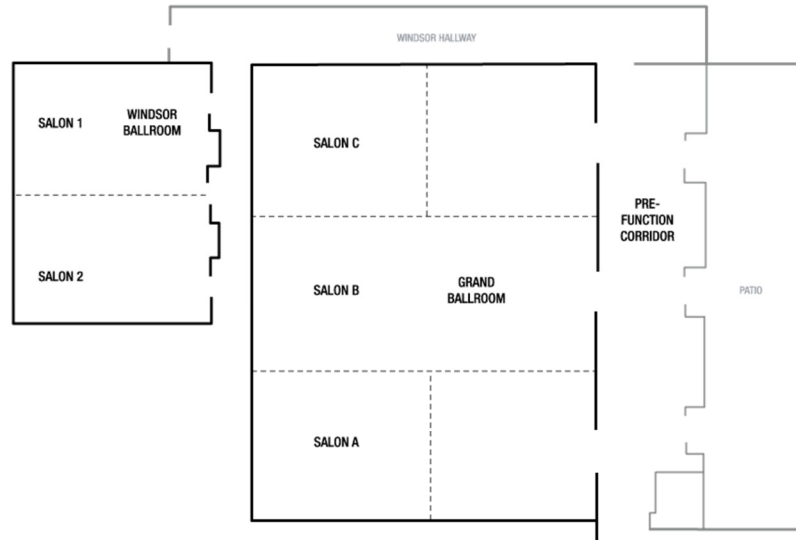
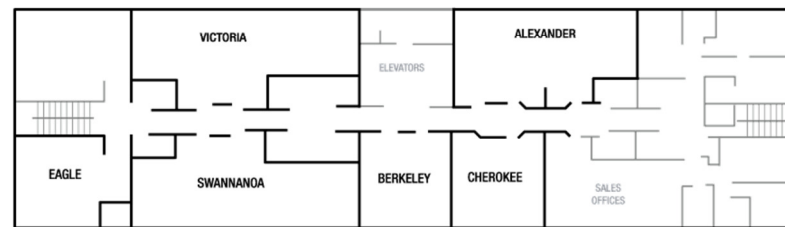


LOBBY LEVEL



SECOND FLOOR



SEDAAG Executive Committee

President: Doug Gamble, UNC Wilmington
 Vice President: Ron Kalafsky, University of Tennessee
 Treasurer: Heidi Lannon, Santa Fe College
 Secretary: Josh Inwood, University of Tennessee
 Councilor: Derek Alderman, University of Tennessee
 Past President: Russ Ivy, Florida Atlantic University

SEDAAG Steering Committee

Members of the Executive Committee (see above)

Editors, *Southeastern Geographer*: Carl Andy Reese and David Cochran, University of Southern Mississippi

Student Representative: Liz Shockey, UNC Charlotte

State Representatives:

Alabama	Jennifer Rahn, Samford
Florida	Chris Meindl, USF- St. Petersburg
Georgia	Katherine Hankins, Georgia State
Kentucky	Daehyn Kim, University of Kentucky
Mississippi	Kathleen Sherman-Morris, Mississippi State
North Carolina	Michael Lewis, UNC Greensboro
South Carolina	Christa Ann Smith, Clemson University
Tennessee	Micheline van Riemsdijk, Tennessee
Virginia	Dawn Bowen, University of Mary Washington
West Virginia	Robert Kruse, West Liberty University

SEDAAG 2012 Local Arrangements Committee

Bill Graves	University of North Carolina at Charlotte
Barbara John	University of North Carolina at Charlotte
Tyrel Moore	University of North Carolina at Charlotte
Jonathan Kozar	University of North Carolina at Charlotte
Liz Shockey	University of North Carolina at Charlotte
Saskia van de Gevel	Appalachian State University

Officers, Association of American Geographers

President: Eric Sheppard, University of Minnesota
 Vice President: Julie Winkler, Michigan State University
 Secretary: Jenny Zorn, California State University, San Bernardino
 Treasurer: Marilyn Raphael, University of California, Los Angeles
 Past President: Audrey Kobayashi, Queen's University
 Executive Director: Doug Richardson, Association of American Geographers

SEDAAG 2012 Program Committee

Ron Kalafsky, SEDAAG Vice President and Program Chair, University of Tennessee	
Kamal Alsharif	University of South Florida
Chris Badurek	Appalachian State University
Tom Bell	Western Kentucky University
Altha Cravey	University of North Carolina at Chapel Hill
Tom Crawford	East Carolina University
Peggy Gripshover	Western Kentucky University
Joshua Inwood	University of Tennessee
Hyun Kim	University of Tennessee
Scott Lecce	East Carolina University
Joe Morgan	Jacksonville State University
Ben Shultz	University of Tennessee
Mark Spond	Appalachian State University
Greg Taff	Norwegian Forest and Landscape Institute
Rajiv Thakur	University of Tennessee
Saskia van de Gevel	Appalachian State University
Qingfang Wang	University of North Carolina at Charlotte
Henry Way	James Madison University

SEDAAG 2012 Honors Committee

Dawn Bowen, Chair	University of Mary Washington
Chris Badurek, Chair Elect	Appalachian State University
Dawn Drake	Missouri Western State University
Burrell Montz	East Carolina University
Jason Ortegren	University of West Florida

World Geography Bowl Committee

Jamison Conley, Chair	West Virginia University
Chris Badurek	Appalachian State University
Tom Bell	Western Kentucky University
Bill Carstensen	Virginia Tech
Jennifer Collins	University of South Florida
Dawn Drake	Missouri Western State University
Dennis Edgell	University of North Carolina at Pembroke
Ann Fletchell	Western Carolina University
Peggy Gripshover	Western Kentucky University
Katherine Hankins	Georgia State University
Arlene Hill	University of Memphis
Sara Beth Keough	Saginaw Valley State University
Elizabeth Leppman	Independent Scholar
George Longberger	Georgia Perimeter College
Jeffrey Neff	Western Carolina University
Kevin Raleigh	University of Cincinnati
Tom Ross	University of North Carolina at Pembroke
Caleb Smith	William Carey College
Chriss Smith	Clemson University
Harry Trendell	Kennesaw State University

Paper Session: Perspectives on Human Geography II

Windsor A

Chair: Thomas Howard, Armstrong Atlantic State University,

8:00 – Thomas Howard, Armstrong Atlantic State University, *New Developments in the Preservation of the Cumberland Mountains Landscape*

8:20 – Toni Alexander, Auburn University, *Placing Invisible Disability within the University*

8:40 – Ryan Covington, University of Wisconsin-Milwaukee, *Visible and Calculable: The Politics of Seeing and Speaking on the Savannah River*

9:00 – Bridgette Rivers, Lynn Resler, Robert Oliver, Virginia Tech, *Pungent Provisions: Continuing an Appalachian Tradition*

9:20 – Elizabeth Hennessy, UNC Chapel Hill, *Producing “Prehistoric” Life: Breeding Giant Tortoises in the Galapagos Islands*

9:40 – Thomas A. DePriest, Jr. and Dr. Hsiang-Te Kung, University of Memphis, *A Brief History for the Battle of Flood Control in the Yazoo Mississippi Backwater Area*

Paper Session: Methods and Modeling II

Windsor B

Chair: Andrea E. Gaughan, University of Florida

8:00 – David Keellings¹, Mari Jones², Candida Dewes³, Christiana Photiadou⁴: ¹, University of Florida, ² National Center for Atmospheric Research, ³, UC Santa Barbara, ⁴, Utrecht University, *Modeling European Hot Spells Using Extreme Value Analysis*

8:20 – Peter Waylen¹, Jane Southworth¹, Cerian Gibbes² and Huiping Tsai¹, ¹University of Florida, ²University of Colorado, *Developing Statistical Tools to Determine Significance of Land Cover Changes in Persistence Analyses*

8:40 – Ping Yin, UNC Greensboro and Lan Mu, University of Georgia, *An Empirical Comparison of Spatial Demand Representations in Maximal Coverage Modeling*

9:00 – Andrew Evans, W. Mark Ford, and Lynn Resler, Virginia Tech, *Modeling the Distribution of Northern Hardwoods in the Carolina Northern Flying Squirrel, *Glaucomys sabrinus coloratus*, Recovery Areas of North Carolina and Tennessee*

9:20 – Andrea E. Gaughan, University of Florida, Forrest R. Stevens, University of Florida, Catherine Linard, Fonds National de la Recherche Scientifique, Peng, Jia, University of Florida, and Andrew J. Tatem, University of Florida, *High Resolution Population Distribution Maps for Southeast Asia in 2010 and 2015*

Tuesday: 8:00 am -9:40 am

Paper Session: Urban Geography II

Salon C1

Chair: Henry Way, James Madison University

8:00 – Peter Wood, Florida State University, *Perceptions of Urban Security in San Salvador, El Salvador*

8:20 – Henry Way, James Madison University, *Learning from, and with, the City: Engagement Opportunities for the Decentered Laboratory*

8:40 – Andy Walters, University of West Georgia, Katherine Hankins, Georgia State University Harrison Anixter, Middlebury College Sam Nowak, University of Washington. *Producing Spaces of Flourishing: Neighboring, Shalom, and the Urban Commons*

9:00 – Scott Markley, Georgia State University, *Atlanta's Beltline: A Postmodern Old Wheat Street*

Paper Session: Perspectives from Emerging Economies

Salon A

Chair: Ram Alagan, Alabama State University

8:00 – Sophia Giebultowicz, Michael Emch, Douglas Morgan, Rodolfo Pena, UNC Chapel Hill, Carolina Population Center, and UNC Kidney Center, *The Spatial Epidemiology of Chronic Kidney Disease in Northwestern Nicaragua*

8:20 – Ram Alagan and Seela Aladuwa, Alabama State University, *Indian Ocean as Geostrategic Location: India, China and Sri Lanka Jostle for Relevance in the Indian Ocean*

8:40 – Joe Morgan and Adam Smart, Jacksonville State University, *The Development and Social Implications of Gated Communities in the Democracy of India: The Trappings of a Newly Developing Middle Class*

9:00 – Jeff Popke, East Carolina University, *A Tale of Two Pueblos: The Uneven Mexican Geographies of US Migration Policy*

9:20 – Seth Appiah-Opoku, University of Alabama, *Indigenous Ghanaian Farmers' Perception of Soil Fertility: A Case Study*

9:40 – Erin Bunting, University of Florida, *Local Perception of Risk to Livelihoods in the Semi-Arid Landscapes of the Okavango, Kwando, and Zambezi*

Program at a Glance

Sunday, November 18, 2012

Field Trip

8:30am

Craggy Gardens, led by Saskia van de Gevel and Mark Spond, Appalachian State University (returns at noon) \$10. (Departs from lobby of Renaissance).

SEDAAG Registration

9:30am-1:00pm

Renaissance Foyer (ground floor)

3:00pm-6:00pm

Business Meetings

8:00am to 10:00am

Executive Committee

Windsor Ballroom

11:00am to 4:00pm

Steering Committee

Windsor Ballroom

World Geography Bowl Registration

12:00-1:00pm

Salon A

World Geography Bowl Events

1:00pm-1:30pm

Orientation

Salon A

1:30pm-5:00pm

Round Robin Competition

Salon C1 Salon C2,
Victoria, Alexander,
Swannanoa

5:00pm-5:30pm

Announcement of winning teams
and formation of all-star team

Salon A

Event Organizers:

Jamison Conley
Tom Bell
Bill Carstensen
Dawn Drake
Peggy Gripshover
George Lonberger
Jeffrey Neff

Moderators:

Bill Carstensen
Kevin Raleigh
Tom Bell
Michael Lewis
Chris Badurek

Judges:

Peggy Gripshover
Jeff Neff
George Lonberger
Dawn Drake

Official Scorekeepers: Ann Fletchall
Peggy Jackson
Leslie McLees
Joanne Halls

Teams and State

WGB Coordinators:

Alabama: John Mason
Florida: Jason Ortegren
Georgia: Tim Hawthorne
Mississippi: David Cochran
North Carolina: Jay Lennartson
South Carolina: Jerry Mitchell
Tennessee: Micheline van Riemsdijk
Virginia: Joe Nicholas
West Virginia: Tom Saladyga

Poster Session

6:15pm-7:45pm

Salon B

Graduate and Undergraduate Honors Poster Competitions

Conference Opening Session

8:00pm-9:00pm

Salon A

Welcome: Doug Gamble, President SEDAAG, UNC Wilmington
Introduction of Keynote Speaker: Bill Graves, UNC Charlotte
Keynote Address: Jack Cecil, Biltmore Farms
Closing Remarks: Doug Gamble, President SEDAAG, UNC Wilmington

Welcome Reception

Sponsored by UNC Press and U.S. Geospatial Intelligence Foundation

9:00pm-11:00pm

Cash Bar
Entertainment: *None of the Above*

Patio
Foyer

4:20 – Irene Rehberger, South Florida University, *Sustainable Livelihood Analysis of Ta Hen's Irrigation Project, Cambodia*

Paper Session: Methods and Modeling I

Windsor B

Chair: Aaron H. Evans, Florida Atlantic University

3:00 – Aaron H. Evans, Florida Atlantic University, *Remote Sensing of Evaporative Fraction in Florida: A Comparison of Methods*

3:20 – Robert Ealy and Jeffrey P. Richetto, University of Alabama, *Food Deserts in South Central Alabama: Using Geographical Information Systems (GIS) to Measure Accessibility and Transportation Costs*

3:40 – Brian Johnson, Ryutaro Tateishi, and Toshiyuki Kobayashi, Chiba University, *Using Spatial Interpolation to Improve Fractional Green Vegetation Cover Estimates in Satellite Imagery*

4:00 – Huili Hao, Pat Long, Scott Curtis, Carol Kline, East Carolina University, *Property Owners' Attitude Towards Sustainable Tourism Development: A Spatial Approach*

4:20 – Jasraj V. Gramopadhye, UNC Greensboro, *Indicator Based Assessment of Sustainable Urban Development in the Piedmont of North Carolina*

4:40 – Jacob Turner, Stacy Curry, Roy Stine, UNC Greensboro, *Geophysical Remote Sensing at Guilford Courthouse National Military Park*

Paper Session: Land Use/Land Cover Change

Swannanoa

Chair: Liem Tran, University of Tennessee

3:00 – Liem Tran, University of Tennessee, *Detecting the Effects of Land Use/Land Cover on Mean Annual Streamflow in the Upper Mississippi River Basin, U.S.A.*

3:20 – Amber Ignatius, U.S. Geological Survey and University of Georgia and John Jones, U.S. Geological Survey, *Small Reservoirs of the Georgia Piedmont: Historic Location and Landcover Trends*

3:40 – Paul A. Knapp, UNC Greensboro; Peter T. Soule, Appalachian State University; Justin T. Maxwell, Indiana University, *Mountain Pine Beetle Selectivity in Old-Growth Ponderosa Pine Forests: A Dendroecological Analysis between Live and Dead Trees in Outbreak Areas*

4:00 – John Kupfer, University of South Carolina, Kimberly Meitzen, Duke University and Peng Gao, University of South Carolina, *Flooding and Surface Connectivity of Abandoned Channel Waterbodies in a Southern Floodplain Forest System*

3:40 – Tina Delahunty, Texas Tech University, *Land Use Scenarios for the Johnson County, TN Adventure Tourism Site*

4:00 – Christopher Badurek, Dylan Philyaw, and Rene Salinas, Appalachian State University, *A GIS-based Model for Monitoring Impacts of Exurban Development on Forested Areas*

Paper Session: Urban Geography I Salon C1

Chair: Kenneth Chilton, Ochs Center

3:00 – Kenneth Chilton, Ochs Center, *In the Shadow of the Chattanooga Renaissance: Poverty, Crime and Social Disorder*

3:20 – Sarah Hefner, University of Tennessee, Chattanooga, *Chattanooga's Natural Tourism Evolved into a Destination*

3:40 – Katherine Hankins, Georgia State University, Andy Walter, University of West Georgia, Sam Nowak, University of Washington, Harrison Annixter, Middlebury College, *Intentional Neighboring and the Quiet Politics of Spatial Solidarity*

4:00 – Abigail Jacobs and Joe Morgan, Jacksonville State University; Holly Park, Auburn University, *Social Stress as an Indicator of Crime: Correlating Crime and Social Stress at the Census Block Level*

4:40 – Olivia Williams, Florida State University, *Urban Revitalization in Tallahassee's Art District*

Paper Session: Perspectives on Human Geography I Windsor A

Chair: Michael Nesius, Florida State University

3:00 – Michael Nesius, Florida State University, *Alterity, Contagions and Parasites in CSAs (Companion Species Agriculture)*

3:20 – Mike Dimpfl, UNC Chapel Hill, *Metabolic Trespass: Composting Toilets, Boundary Making and Domestic Space*

3:40 – Amanda Rees, Becky Becker, Andrea Frazier, and Camille Lawrence, Columbus State University, *Spatial Thinking, Power, Pedagogy and Children's Participation in Planning: Finding Common Ground through Geography and Theatre*

4:00 – Tim Hawthorne, Georgia State University, *Doing Community Geography and GIS: Reflections from the Field and the Community*

Monday, November 19, 2012

Conference Registration

7:00am to 12:00pm

Foyer

Papers, Posters, and Panel Discussions

8:00am-5:00pm

Departmental Displays and Posters

Salon B

Job Fair (ESRI and USGIF)

Foyer

8:00am-9:40am

Poster Session: Physical Geography I

Salon B

Panel Session: Why Your Manuscript Was Rejected

Alexander

Paper Session: Graduate Student Honors Papers (Masters)

Salon A

Paper Session: Economic Geography I

Salon C1

Paper Session: Political Ecology I: Agro-Food Movements

Salon C2

Paper Session: Fluvial Geomorphology I

Windsor A

Paper Session: Cultural Geographies

Windsor B

Paper Session: Climate and Land Use/Land Cover Change

Swannanoa

10:00am-Noon

Poster Session: Human Geography

Salon B

Panel Session: Perspectives on Teaching, Research, and Service

Alexander

Paper Session: Graduate Student Honors Papers (PhD)

Salon A

Paper Session: Economic Geography II

Salon C1

Paper Session: Coastal Geography

Windsor B

Paper Session: Progressive Places and Progressive Movements in the South

Victoria

Paper Session: Political Ecology II: Governance

Salon C2

Paper Session: Fluvial Geomorphology II

Windsor A

Paper Session: Biogeography and Land Use/Land Cover Change

Swannanoa

Noon-1:00pm - Lunch

1:00pm-2:40pm

Poster Session: Physical Geography II

Salon B

Panel Discussion: Education Committee on Study Abroad

Alexander

Paper Session: Southern Studies

Salon A

Special Session in Honor of John J. Winberry

Windsor B

Paper Session: Gamma Theta Upsilon Undergraduate Papers

Swannanoa

Paper Session: Geographies of the Geoweb

Paper Session: Socioeconomic Space:

Perceptions on Contemporary Market-Makers

Victoria

Paper Session: Economic Geography III

Salon C1

Paper Session: GIS and Environmental Decision-Making

Session I: Sustainability

Windsor A

Paper Session: Political Ecology III: Risk and Sustainability

Salon C2

3:00pm-5:00pm

Panel Session: Leadership in Geography and Geo. Ed. (in Honor of Sidney Jumper)	Alexander
Paper Session: Defiant Geographies	Salon B
Paper Session: GIS and Environmental Decision-making	
Session II: Land Use	Salon C2
Paper Session: Urban Geography I	Salon C1
Paper Session: Perspectives on Human Geography I	Windsor A
Paper Session: Methods and Modeling I	Windsor B
Paper Session: Land Use/Land Cover Change	Swannanoa

World Geography Bowl

5:45pm –7:15pm Championship Event Salon A

World Geography Bowl Chair: Jamison Conley, Chair, West Virginia University

Moderator: Jamison Conley, West Virginia University

Judges: Dawn Drake, Missouri Western State University and Laurence W. Carstensen, Virginia Tech

Warm-up Round:

Student All-Stars vs. Professional Dream Team

Student All-Star Team: From Six Preliminary Round Non-finalist Teams

Professional Dream Team: Julie Winkler (AAG Vice President), Doug Gamble (SEDAAG President), Alice Tym (UT Chattanooga), Eric Fournier (Samford University), 2 additional at large faculty members of the SEDAAG division

Championship Round:

Top two state teams from SEDAAG compete in a single Championship Round, winner takes all. Trophies to the winning team and to the Most Valuable Player.

Studies of the American South Specialty Group Happy Hour Lobby Bar

5:00pm-6:00pm

Student Coffee Hour Patio

6:00pm-7:00pm

Sponsored by the following Geography Departments: University of Tennessee, University of Georgia, UNC Charlotte, Florida State University and UNC Chapel Hill

Opening Remarks: Liz Shockey, SEDAAG 2012 Student Representative

Monday: 3:00 pm – 5:00 pm

Panel Session: Leadership in Geography and Geographic Education (in Honor of Sidney Jumper) Alexander

Organizer and Chair: Carol Harden, University of Tennessee

Panel Members: **Neal Lineback**, Appalachian State University (retired); **John Morgan**, Emory and Henry; **Hsiang-te-Kung**, University of Memphis; **Tyrel Moore**, UNC Charlotte; **Sally Horn**, University of Tennessee; **Bruce Ralston**, University of Tennessee (retired)

Paper Session: Defiant Geographies Salon B

Chairs: Heather Ward and Derek Alderman, University of Tennessee

3:00 – Bob Edwards, East Carolina University and Patrick Gillham, University of Idaho, ***Resisting Strategic Incapacitation: Occupy Wall Street, the New York Police Department, and the Struggle to Control the Field of Protest***

3:20 – Liz Hines, UNC Wilmington, ***Port City on Fire: Protest and Rage, Desegregation and Rage, and Defiance of Jim Crow in Wilmington, North Carolina***

3:40 – Josh Inwood, University of Tennessee, ***Bending the Arc of Justice: Dr. Martin Luther King Jr., the Poor People’s Campaign and Defining the Capitalist State***

4:00 – Jim Tyner, Kent State University, ***A Soul Burning for Life: The Death and Life of Dang Thuy Tram***

4:20 - Heather Ward, ***Watershed Wars: Say No to Sanderson Farms***

Paper Session: GIS and Environmental Decision-making Session II: Land Use Salon C2

Session Organizers: Chris Badurek, Appalachian State University and Greg Dobson, UNC Asheville

Chair: Chris Badurek, Appalachian State University

3:00 – Brian Wize and Christopher Badurek, Appalachian State University, ***Cumulative Viewshed Analysis and GIS Modeling to Site Wind Power Parks in the New River Gorge Region, WV***

3:20 – Todd Lookingbill, University of Richmond, ***GIS-based Assessment of Landscape Dynamics for Management of National Battlefields***

1:20 – Maggie M. Kovach, UNC Chapel Hill, *Heat Related Illness and North Carolina: Linking Spatial Variations in Heat Related Illness to Land Cover and Socioeconomic Patterns*

1:40 – Derek Morgan, Matt Hutchins, Jim Fox, and Karin Rogers, UNC Asheville, *Integrating GIS and BBN's for Exploratory Analysis of Environmental Data and Decision Making*

2:00 – David Abernathy, Warren Wilson College, *Collaborative Asset Mapping for Regional Food Security: ODK & Google Fusion Tables*

Paper Session: Paper Session: Political Ecology III: Risk and Sustainability
Salon C2

Organizer: University of Kentucky Political Ecology Working Group (UK-PEWG)
Chair: Brian Grabbatin, University of Kentucky

1:00 – Conor Harrison, University Of North Carolina – Chapel Hill, *Circulating nature and capital in eastern North Carolina: The case of Rocky Mount Mills*

1:20 – Rosibel Roman, Florida International University, *Unfriendly Infrastructure: An Urban Socio-Ecological Study Of Older Pedestrians' Risks in South Florida*

1:40 – Shivangi Prasad, Florida Atlantic University, *Natural Hazard Losses, Human Vulnerability, and Resilience: Variations along the Rural-Urban Continuum*

2:00 – Michelle Covi, East Carolina University, *Sea Level Rise Policy Conflict In North Carolina: Local Context, Agency And Skepticism*

2:20 – Jairus Rossi, University Of Kentucky, *Virtual Riskscapes: Remaking Future Ecosystems Through Seed Banks And Geospatial Archives*

2:40 – Sara Liz Dymond, Korine Kolivras, Yili Hong, Jie Li, Stephen P. Prisley, James B. Campbell, Randel L. Dymond, Virginia Tech, David N. Gaines, Virginia Department of Health. *The Study of Human and Environmental Variables as Predictors of the Spatial Pattern of Lyme Disease Emergence in Virginia.*

Honors Banquet
7:30pm-10:00pm

Salon B and C

Presiding: Dawn Bowen, Honors Committee Chair
Presentation of Awards
Honors Address: Julie Winkler, Michigan State University
Closing Remarks: Doug Gamble, President SEDAAG

Tuesday, November 20, 2012

Papers and Panel Discussions

8:00am-9:40am

Paper Session: Urban Geography II Salon C1
Paper Session: Perspectives from Emerging Economies Salon A
Paper Session: Perspectives on Human Geography II Windsor A
Paper Session: Methods and Modeling II Windsor B

Business Meeting

10:00am-12:00pm

Salon A

Presiding: Doug Gamble, SEDAAG President, UNC Wilmington

Adjournment

Have a safe trip home!

2012 SEDAAG ANNUAL MEETING

Note that each paper time slot is 20 minutes long: 15 minutes for the paper presentation, followed by 5 minutes of audience/presenter discussion. Please respect the chairperson's time cues.

Sunday: 6:15 pm – 7:45 pm

Poster Session: Graduate Honors Competition Posters

Salon B

Derek Law, University of Kentucky, *Use of Terminal Restriction Fragment Length Polymorphism (T-RFLP) to Characterize the Microbial Community of a Black Oak Tree Throw in Robinson Forest, Kentucky*

Heather Blair, East Carolina University, *North Carolina Winegrowers' Perception of Climate Change Impact*

Keelin Billue, University of Alabama, *Extent of Alabama's Terrestrial Nature Reserve System in Representing Biological Diversity*

Kunwar K. Singh, UNC Charlotte, *Detecting and Mapping Sub-canopy Invasive Plants in Urbanizing Forest Landscapes Using LiDAR-derived Metrics*

Reece Brown, Appalachian State University, *Forest Disturbance Variability in Shawnee State Forest, Scioto County, OH*

Johnathan W. Sugg, Appalachian State University, *Land Cover Effects on Snow Classification in the Southern Appalachian Mountains*

Alexander Smith, East Carolina University, *Terrestrial Laser Scanning of Coastal Blowout Dunes in Cape Cod National Seashore: Methodological and Geomorphic Analysis*

Donna Selch, Florida Atlantic University, *Comparing Salinity Models in Whitewater Bay Using Remote Sensing*

Kathryn Reavis, East Carolina University, *Using Terrestrial Laser Scanning to Monitor and Evaluate the Rates of Movement of the Slumgullion Landslide, CO*

Kabindra Joshi, Mississippi State University, *Mass Balance measurement of Fedchenko Glacier 2004-2009, Tajikistan*

Poster Session: Undergraduate Honors Competition Posters Salon B

Robert A. Barnett, Samford University, *The Least of These: Exploring Homeless Ministry in Birmingham, Alabama*

Zach Brumfield, Samford University, *History of the Town of Arkwright, Alabama*

Chris Jones, UNC Chapel Hill, *Monitoring Hemlock Health Using Remotely Sensed Data*

Lauren Crain, University of Alabama, *The State of Geography Education*

Kyle Duncan, Samford University, *Ever Changing Streets: The Geographic and Human Migration of the Homeless in Birmingham, Alabama*

William Funderburk, University of Southern Mississippi, *Transforming a University Campus with GIS: Creating Sustainable, Organic, Permacultural, Edible Landscapes*

Hannah Herrero, University of Florida, *Observing Vegetation Change Over 72 years in Gorongosa National Park, Mozambique Using Photographic Evidence*
Jonathan Herrin, Samford University, *Genghis Khan- Carving the Way to Mongolian Culture through Conquest*

Shaena Hicks, Salisbury University-Henson, *Climate Impacts on Coastal Planning*

Paper Session: Creation of Socio-economic Space(s) and Perceptions of Contemporary Market-makers Victoria

Chair: Madhuri Sharma, University of Tennessee

1:00 – Chandler White, University of Tennessee, *Informal Economy and its Spatial Manifestation: An Examination of the Flea Market in the American South*

1:20 – Brenna Elrod, University of Tennessee, *Crowdfunded Place: An Examination of Successfully Funded Place Based Initiatives in the Southeastern United States*

1:40 – Jihwan Yoon, University of Tennessee, *Driving Forces of Spatial Changes*

2:00 – Madhuri Sharma, University of Tennessee, *Intra-Urban Residential Intermixing in Knoxville, Tennessee: Market-Led Pluralism in a Small MSA Context*

2:20 – Alice Tym, UT Chattanooga, *Alchemy in the 21st Century: Turning Rock (Climbing) into Gold in Chattanooga, Tennessee*

Paper Session: Economic Geography III Salon C1

Chair: Dawn M. Drake, Missouri Western State University

1:00 – Dawn M. Drake, Missouri Western State University, *A Geographic Comparison of Marketing New Emissions Technology for Farm Machinery*

1:20 – Susan M. Walcott, UNC Greensboro, *The NC Big Three: Growth Dynamics in Charlotte, the Triangle and the Triad*

1:40 – Keith G. Debbage and Edward M. Beaver, UNC Greensboro, *The Geography of Non-Earned Income in the Piedmont Megapolitan Region*

2:00 – Heidi Frontani, Elon University, *China's Development Initiatives in Ghana, 1961-2011*

Paper Session: GIS and Environmental Decision-making Session I: Sustainability Windsor A

Session Organizers: Chris Badurek, Appalachian State University and Greg Dobson, UNC Asheville

Chair: Greg Dobson, UNC Asheville

1:00 – Robin Hale and Christopher Badurek, Appalachian State University, *Assessing the Impacts of Water Supply Watershed Designation on Rates of Development using GIS*

Paper Session: Southern Studies Special Session in Honor of John J. Winberry
Salon A

Sponsor: SEDAAG Southern Studies Committee

Organizers: Derek Alderman, University of Tennessee, Knoxville and Tink Moore, UNC - Charlotte

Session Chair: Tyrel G. Moore, UNC Charlotte

Session Discussant: Chuck Kovacik, University of South Carolina

1:00 –John Fraser Hart, University of Minnesota, *Southern Crops: 1924-2007*

1:20 – Derek H. Alderman, University of Tennessee, *When an Exotic Becomes Native: Untangling the Kudzu Vine and Paying Tribute to John Winberry*

1:40 – Tyrel G. Moore, UNC Charlotte, *Farms and Farmers in Historic Censuses: Images and Regional Policy Connections from Nineteenth Century Southern Appalachia*

Paper Session: Gamma Theta Upsilon Undergraduate Papers Windsor B

Chair: Doug Gamble, University of North Carolina at Wilmington

1:00 – Carlton Anderson, University of Southern Mississippi, *Using GIS and Remote Sensing Applications to Determine Recovery from Disaster: Seven Years Post-Katrina in Communities of Hancock County*

1:20 – Mechelle Puckett, Georgia State University, *The Shaping of Atlanta's Public Housing*

1:40 – Michael Waylen, Florida State University, *'Chocolate Nations' and the Issues Surrounding Cocoa Production in West Africa*

Paper Session: Geographies of the Geoweb Swannanoa

Chair and Session Organizer: Taylor Shelton, Clark University

1:00 – Taylor Shelton, Clark University, *User-generated Political Geographies: Placing Politics on the Geoweb*

1:20 – Ate Poorthuis, University of Kentucky, *Tracing the Variegated Use of Public Space through the Geoweb: A Short History of the High Line*

1:40 – Matthew Wilson, University of Kentucky, *Continuous Connectivity, Handheld Computers, and Mobile Spatial Knowledge*

2:00 – Matthew Zook, University of Kentucky, *Mapping Zombies*

Ryan Hile, Auburn University, *Earthquake Hazards and Social Vulnerability in Salt Lake County, Utah: A Case Study*

Taylor Holden, University of Richmond, *Mapping the Trees of the University of Richmond: Species Diversity and Carbon Content*

Briana Karl, Concord University, *A Long Way from Home: International Students in a Rural West Virginia College*

Meghan McCollum, Samford University, *Dune Vegetation on Dauphin Island*

Emily Morris, Appalachian State University, *The Impacts of Urbanization on Precipitation around Three Urban Centers in the Kentucky-Ohio River Valley*

Anna R. Morrison., Samford University, *Christian Mapping of the 21st Century*

Crystal Lambert, University of West Georgia, *Result of Tree Canopy Loss on Campus*

Haley Llewellyn, University of West Georgia, *The Role of Climate Oscillations in Peanut Yields of Southwest Georgia*

Carlee Loeser, Salisbury University, *Lake-Effect Cloud Band Frequency and Snowfall with Emphasis on Multiple-Lake Connections*

Bradley Macpherson, Salisbury University, *Intersection Based Retail Location Modeling: A Nodal Network Approach*

Kaitlin Malick, University of Tennessee, *Anti-Racist Programming at a Southern State University*

Shannon Moore, Samford University, *Puerto Supe: An Environmental History of a Coastal Peruvian Town*

Corey Nabors, Jacksonville State University, *Historic Tornado Outbreaks*

Maria Panaccione, West Virginia University, *Coffee, Crisis and Social Protest: Mapping the Las Tunas Social Movement in Nicaragua*

Robert Paul, Samford University, *Cartographic Technology 1980-2010*

Conor Phelan, University of Richmond, *Examining Population Migration of Conifers in the Pacific Northwest as a Result of Climate Change*

Joseph Roberts, North Carolina Central University, *Accuracy Assessment of Historical Maps from the Roanoke River Watershed, North Carolina*

Thomas Rice, Columbus State University, *From Space to Place: Mapping Historic Neighborhoods in the East Highland District of Columbus, GA*

Michelle Saunders, Salisbury University, *Migration of United States Tornadoes 1950-2011*

Erik Schmidt, University of Tennessee, *Assessing the Narration of Slavery along River Road Plantation Tourism Sites, Louisiana*

Wesley Skeeter, Salisbury University, *Using Radar Composites Created in Model Builder to Preform Statistical Analysis of Cold Frontal Precipitation Events in the Chesapeake Bay Region: April through October 1997 - 2011*

Austin Storms, Samford University, *Mapping Shelby County's Historic Bailey Cemetery*

Allen Treadway, Concord University, *Granny Women: A Lost Appalachian Cultural Art*

Jamie Wheeler, East Carolina University, *Assessing Spatial Relationships between Sites for Natural Gas Development and Natural and Artificial Features in Pennsylvania*

Cameron Yaw, Samford University, *Bailey Cemetery History and Spatial Distribution of Grave Sites*

Monday: 8:00 am -5:00 pm

Departmental Displays and Posters

Foyer

Job Fair (ESRI and USGIF)

Foyer

Monday: 8:00 am – 9:40 am

Poster Session: Physical Geography I

Salon B

Sandra Rhine and Dr. Michael Steinberg, University of Alabama, *Historical Mapping and Monitoring of the Mangrove Forests of Ambergris Caye (Belize) Using Multi-date Landsat Imagery: A Twenty-five Year History*

Theresa K. Andersen and J. Marshall Shepherd, University of Georgia, *A Global Analysis of Inland Tropical Cyclone Maintenance or Intensification.*

Kyle Mattingly, Western Kentucky University, *Large, Long-lived Convective Systems Over Subtropical South America and their Relationships with Atmospheric Tele-connections*

Kevin MacLeod, University of South Carolina, *Modeling Intermittent and Perennial Headwater Streams in North Carolina*

Ona Strikas, Florida State University, *Allocation of Water within the Apalachicola-Chattahoochee-Flint Basin: Has Sustainability Been Addressed?*

Jason S. Polk, Ben Miller, Nick Lawhon, Jonathan Oglesby, Philip Reeder, Bernie Strenicky, and AJ Strenicky, Western Kentucky University, *Understanding Drought and Water Resources Issues in Belize: Case Studies Using Rural Karst Landscapes from Past to Present*

John Nowlin, UNC Greensboro, *Pierce's Disease Risk within the Yadkin Valley AVA of North Carolina, a GIS Approach*

Leslie A. North, Jason Polk, Jonathan Oglesby, Taylor Hutchinson, and Chris Groves, Western Kentucky University, *Under Our Feet: Avenues for Promoting Karst Groundwater Awareness and Sustainability*

Rocky Bilotta^{a,b}, Ethan Shepherd^{a,c}, Jesse E. Bell^{a,d}, ^aNOAA's National Climatic Data Center (NCDC), ^bEarth Resources Technology, ^cSTG, inc., ^dCooperative Institute for Climate and Satellites-NC (CICS-NC), North Carolina State University, *Estimating Frost Depth Using the Modernized Air-Freezing Index*

Kevon Rhiney, University of the West Indies, *Impacts of Climate Change on Coffee Production in Jamaica: Preliminary Insights*

Cale Galloway, East Carolina University, *Estimating Forest Profiles in an Evergreen Needleleaf Forest Using Ground-based Terrestrial Laser Scanning*

Panel Discussion: Education Committee Panel Proposal on Study Abroad – Faculty Ethics and Logistics of Self-designed Versus Third Party Provider Study Abroad Programs

Alexander

Session Chair: Heidi Lannon, Santa Fe College

Panel Members: **Jennifer Rogalsky**, SUNY Geneseo, (Ghana, faculty organized); **Sarah Blue**, Texas State, (Travel to Cuba, proposed faculty organized and 3rd party; Belgium, participant); **Jennifer Rahn**, Samford University (Field work in the Caribbean, Saba, faculty organized and 3rd party)

David Harms Holt, University of Southern Mississippi, *Parcel-based Land use of the Southern Three Counties of Mississippi*

Robert Kavanaugh, University of North Alabama, *Limnoarchaeology Using Commercially Available Side-Scan Sonar: The Locks of the Muscle Shoals Canal, Alabama*

Cameron Carlyle and Jeffrey Colby, Appalachian State University, *New Geomorphometric Algorithms for Mapping the Extent of Riparian Areas in Southern Appalachian Headwater Catchments*

Michael T. Griffin and Burrell Montz, East Carolina University, *Assessment of Fresh Water Resource Availability in Coastal North Carolina*

Robbie Munroe, East Carolina University, *Storm Surge Climatology for North Carolina*

Tommy Patterson. UNC Greensboro, *Comparing Growth and Morphological Characteristics of North Carolina Coastal and Piedmont Longleaf Pine Stands*

David Holt, Lashaun Logan, Reed Davis, Harron Wise and Ashley Gros, University of Southern Mississippi, *Protecting the Mississippi Sandhill Crane through Landuse Classification and Site Suitability Modeling*

Jeffrey Colby¹, Christopher Coffey², Ashleigh Turner³, Cameron Carlyle¹, and Chuanhui Gu⁴, ¹Department of Geography and Planning and ⁴Department of Geology, Appalachian State University, ²National Geospatial-Intelligence Agency, ³Tuck Mapping Solutions, Inc., *The Upper South Fork of the New River (USFNR) Watershed Project*

Katherine A. Renken and Steven Namikas, Louisiana State University, *Comparing Flow Dynamics of Two Dune Grass Species to Gain Insight Into Shear Stress Partitioning Models*

Ian Comstock, and Corene Matyas, University of Florida, *Relationships Between Tropical Cyclone Warning Times, Rain Event Duration, and Rain Accumulation*

Carter, G., K. Lucas, E. Otvos, and A. Criss, University of Southern Mississippi, *Changes in Vegetation and Land Area on the Mississippi-Alabama Barrier Islands, U.S.A., in the Initial Five Years Following Hurricane Katrina*

Caitlin Strachan, Chris Kaase and John Kupfer., University of South Carolina, *Effects of Forest Type and Management History on Downed Woody Material and Leaf Litter in a Managed Southeastern Pine and Hardwood Forest*

Kevin Davis, University of Southern Mississippi, *A Historical Case Study of Longleaf Pine Nature Preserve: The Reintroduction of Fire to a Longleaf Pine Savannah*

Zhixiao Xie, Leonard Pearlstine, and Dale E. Gawlik, Florida Atlantic University, *Developing a Fine Resolution Digital Elevation Model to Support Hydrological Modeling and Ecological Studies in the Northern Everglades*

Scott A. Lecce, East Carolina University, *Historical Changes in Channel Geometry and Stream Power in the Blue River, Wisconsin*

Gabrielle Katz¹, Dale Turner², and Juliet Stromberg³, ¹Appalachian State University, ²The Nature Conservancy, ³Arizona State University, *Effects of Fire on the Riparian Forest of a Desert Preserve, San Pedro River Preserve, Arizona*

Jeremiah Bishop, University of Alabama, *Geomorphic and Geologic Controls on Shoals in the Cahaba River*

David M. Brommer, University of North Alabama, *Spatial Characterization of Storm Internal Precipitation Distribution for the United States (1980-2009)*

Kimberly Holmes and Jonathan Herbert, Jacksonville State University, *Annual and Seasonal Tornado Risk Analysis*

Grant L. Harley¹, Henri D. Grissino-Mayer², and Sally P. Horn², ¹University of Southern Mississippi, ²University of Tennessee, *Fire History and Forest Structure of an Endangered Subtropical Ecosystem in the Florida Keys, U.S.A.*

Keren Bolter and Tobin Hindle, Florida Atlantic University, *Assessing the Threat of Climate Change Induced Sea Level Rise to Vulnerable Populations in Southeast Florida*

Jonathan B. Mason and Jason C. Senkbeil, University of Alabama, *Recommended, but Inadequate: An Analysis of Tuscaloosa Resident Tornado Shelter Adequacy*

Pete D. Akers, University of Georgia, *The Characteristics and Spatial distribution of Current Paleoenvironmental Research on the Penultimate Glaciation and Termination*

Risa Patarasuk, Yin-Hsuen Chen, Naveen Anne Jaya Prakash, Li Bai, Sonia Delphin, University of Florida, *Remote Sensing Solution for Updating the National Coastal Wetlands Inventory*

Robert Sorrells, Dan Royall, UNC Greensboro, *Hydrogeomorphology of Alluvial Benches in an Anabranching Reach of the Upper Yadkin River, North Carolina*

Kayla Pendergrass and Christopher Gentry, Austin Peay State University, *Growth Response in Ponderosa Pine Stands at Mount Rushmore National Monument, South Dakota*

Jason McVay and Lisa Kennedy, Virginia Tech, *Utilizing Macroscopic Charcoal to Reconstruct Local Fire History: Laguna Limón, Dominican Republic*

Philip L. Chaney, Greg S. Weaver, Susan Youngblood, and Kristin Pitts, Auburn University, *Tornado Preparedness of Local Residents: The 2011 Tornado Disaster in DeKalb County, Alabama*

Kathleen Sherman-Morris, Karla Antonelli, Amanda Lea, and Carrick C. Williams, Mississippi State University, *Effective Communication of Hurricane Storm Surge Threat*

Ginger M. Kelly, Brett F. Taubman, L. Baker Perry, James P. Sherman, Jill E. Thomley, Appalachian State University, and Wendy Patoprsty, NC A&T University, *CAN-DOO Informal Climate Science Education: A University and K-12 Partnership*

William Pace and Burrell Montz, East Carolina University, *The Role Hurricane Characteristics Play on People's Perception of Hurricane Risk*

Jason T. Ortegren¹, Ashley Weatherall², and Justin T. Maxwell³, ¹University of West Florida, ² University of South Florida, ³ Indiana University, *Subregionalization of Low-Frequency Summer Drought Variability in the Southeastern U.S.A.*

Yingzhi Zhang and Dajun Dai, *Simulating Fire Spread in a Community Using an Agent-based Model*

John C. Rodgers III, Mississippi State University, *Invasive Plant Management, Spatial Analysis of a Control Strategy in the Bahamas*

Benjamin M. Riddle, Saskia L. van de Gevel, and Christopher A. Badurek, Appalachian State University, *Forest Stand Dynamics and Land-Use History of the Appalachian State University Nature Preserve*

Georgina G. DeWeese, W. Jeff Bishop, University of West Georgia; Lisa B. LaForest, University of Tennessee, *The Historical Dendroarchaeology of the Log Cabin Inside the Green Hotel, Cave Spring, Georgia, U.S.A.*

Kevin Ash, Gregg C. Bowser, Ronald L. Schumann, III, University of South Carolina, *Trade-offs in Threat Perception: Evaluating Responses to Tornado Warning Graphics*

10:20 – Joann Mossa, University of Florida, *A Retrospective Analysis of Channel Geometry at the Old River Juncture, Louisiana*

10:40 – Robert Pavlowsky, Marc Owen, and Daniel Williams, Missouri State University, *Sediment PAH (Polycyclic Aromatic Hydrocarbon) Contamination in an Urban Watershed and the Influence of Coal-tar Sealant Sources*

Paper Session: Biogeography and Land Use/Land Cover Change Swannanoa

Chair: Andrew W. Ellis, Virginia Tech

10:00 – Andrew W. Ellis, Virginia Tech and Kevin W. Murphy, Arizona State University, *Modeling the Climate Sensitivity of the Central Arizona Surface Water Supply*

10:20 – Ioannis Kokkinidis, Steven C. Hodges, James B. Campbell, Virginia Tech, *Using Remote Sensing to Track the Extent of Agriculture in Virginia: Methods and Issues*

10:40 – Gillian Breary, Florida Atlantic University, *Differentiating Between Urban Green Space and Suburban Areas in Landsat Imagery*

11:00 – Sarah E. Haas, Ross K. Meentemeyer, UNC Charlotte and Tomáš Václavík, Helmholtz Centre for Environmental Research, *Biogeography of Emerging Infectious Diseases*

11:20 – Peter T. Soule', Appalachian State University, Paul A. Knapp, UNC Greensboro, *Have Locally Co-occurring Conifers in the Northern Rockies Experienced Differential Changes in Radial Growth During the Past Century?*

Monday: 1:00 pm -2:40 pm

Poster Session: Physical Geography II

Salon B

Derek J. Martin, University of Tennessee, *Large Woody Debris in an Ozarks River: Implications for Sediment Storage*

Marc Owen and Robert Pavlowsky, Missouri State University, Scott Lecce, East Carolina University, Derek Martin, University of Tennessee, *Local-Scale Variations in Floodplain Contamination by Historical Mining in the Old Lead Belt, SE Missouri*

Alan W. Black, John A. Knox, Jared A. Rackley, Vittorio A. Gensini, Michael Butler, Corey Dunn, Taylor Gallo, Melyssa R. Hunter, Lauren Lindsey, Minh Phan, Bobby Scroggs, Synne Brustad, *Tornado Debris Characteristics and Trajectories During the 27 April 2011 Super Outbreak as Determined Using Social Media Data*

Paper Session: Progressive Places and Progressive Movements in the South
Victoria

Chair: Rebecca Dobbs, University of North Carolina - Chapel Hill

10:00 – Nancy Morris, Lone Star College, *The Election of a Lesbian Mayor in a Religiously Conservative City: The Case of Houston, Texas*

10:20 – Toby Martin Applegate, East Carolina University, *Deliberation and the Machine: Twenty-five Years of Progressive Politics in Knoxville, TN*

10:40 – Angela C. Halfacre, Furman University, *Conservation Culture in the American South: Land, Leadership, and Livelihoods in the Carolina Lowcountry*

11:00 – Arnold Modlin, Norfolk State University, *Wish You Were Here: Postcards from St. Augustine's Slave Market*

Paper Session: Political Ecology II: Governance Salon C2

Organizer: University of Kentucky Political Ecology Working Group (UK-PEWG)
Chair: Eric Nost, University of Kentucky

10:00 – Hugh Deaner, University Of Kentucky, *Neoliberalizing (Re)regulation of Socionature: The Case of Industrial Mine Tailings Waste in the Tar/Oilsands Region*

10:20 – William M. Hunter, Cultural Resource Analysts Inc., *Seeing Beyond Blair Mountain: Abandonment, Erasure, and Permanence in the Southern Appalachian Coal Fields*

10:40 – David S. Salisbury, University Of Richmond, *Transboundary Political Ecology in The Amazon Borderlands: Mapping, Geographic Information, And Political Will On The Border Between Brazil And Peru*

11:00 – Eric Spears, Mercer University, *The Political Ecology of Jekyll Island and Its (Re)Definition of Space*

11:20 – Brian Grabbatin, University Of Kentucky, *Land Is Not A Commodity: Property Law And The Tragedy Of The Family Commons In Coastal South Carolina*

Paper Session: Fluvial Geomorphology II Windsor A

Chair: Joann Mossa, University of Florida

10:00 – Jonathan D. Phillips, University of Kentucky, *Watershed Fragmentation in Coastal Plain Rivers*

Monday: 8:00 am – 9:40 am

Panel Session: The Care and Feeding of Journal Editors or Why Your Manuscript Was Rejected Alexander

Panel Co-Chairs: Margaret M. Gripshover and Thomas L. Bell, Western Kentucky University

Panelists: **Thomas L. Bell**, Co-Editor, *FOCUS on Geography*, Western Kentucky University; **Robert Brinkmann**, Former Editor, *Southeastern Geographer*, Hofstra University; **David M. Cochran**, Co-Editor, *Southeastern Geographer*, University of Southern Mississippi; **Margaret M. Gripshover**, Co-Editor, *FOCUS on Geography*, Western Kentucky University; **David J. Keeling**, Editor, *Journal of Transport Geography*, Western Kentucky University; **Sara Beth Keough**, Editor, *Material Culture*, Saginaw Valley State University; **Leslie A. North**, Former Editorial Assistant and Cartographic Editor, *Southeastern Geographer*, Western Kentucky University; **Carl A. "Andy" Reese**, Co-Editor, *Southeastern Geographer*, University of Southern Mississippi.

Paper Session: Graduate Student Honors Papers (Masters) Salon A

Organizer: SEDAAG Honors Committee
Chair: Dawn Bowen, University of Mary Washington

8:00 – Kassie Hauser, University of Tennessee, *Exploring Participant Involvement in Climate Change Decision-Making: A Case Study of Public Lands in Alaska*

8:20 – Melanie Barron, University of Tennessee, *Truth, Justice, and the Right to the City in Boston, MA*

8:40 – Kelly Irvin, Auburn University, *Geography of Culture Change at Hickory Ground, a Historic Creek Indian Archaeological Site*

9:00 – Linwood Hall, East Carolina University, *A Climatology of the Structure, Frequency, and Propagation of Midlatitude Cyclones that Affect North Carolina*

9:20 – Derek Jaworski, Georgia State University, *Characteristics of Built Environment and their Relationships with Pedestrian-vehicle Crashes Using Geographic Information Systems and Remote Sensing Techniques*

Paper Session: Economic Geography I Salon C1

Chair: Serge Atherwood, Pennsylvania State University

8:00 – Serge Atherwood, Pennsylvania State University, *Resilience of Sales Prices in Historic Districts after a Real Estate Bubble: A Case Study of Savannah, Georgia*

8:20 – Cindy Shaw, Florida Atlantic University, *Foreclosure Effects: The Changing Landscape and Those Left Behind in Broward County, Florida*

8:40 – Hilton Cordoba, Florida Atlantic University, *Modeling the Spatial Variation in U.S. Airline Passenger Fares*

9:00 – Michael Husebo, University of Georgia, *Migration as Labor Agency: Producing New Divisions of Labor in Agricultural Production*

9:20 – Christine Mitchell, Florida Atlantic University, *Spaces of Opportunity: Latino Migrants and the Rise of the Saw Palmetto Berry Informal Economy*

Paper Session: Paper Session: Political Ecology I: Agro-Food Movements
Salon C2

Organizer: University of Kentucky Political Ecology Working Group (UK-PEWG)
Chair: Jairus Rossi, University of Kentucky

8:00 – Brian Williams, Ohio State University, *Agro-industrial Development as White Supremacy in the Yazoo-Mississippi Delta*

8:20 – Jennifer F. Brewer, East Carolina University, *Adaptive Capacity of Quota Markets In The New England Groundfishery*

8:40 – Lowery Parker, University Of Georgia, *Agricultural Investment in Mazabuka, Zambia: The Effect of Smallholder-based Schemes on Economic Landscapes*

9:00 – Eric Nost, University Of Kentucky, *Scaling-Up Local Foods: The Case of a Kentucky CSA Farm*

Paper Session: Fluvial Geomorphology I Windsor A

Chair: Joann Mossa, University of Florida

8:00 – Chris Van Dyke, University of Kentucky, *Changing States: Applying State-and-Transition Models to Understand Channel Evolution*

8:20 – Linda Kennedy and Phillip Dan Royall, UNC Greensboro, *Nineteenth Century Sediment Yield and Sediment Delivery in Southern Appalachia*

8:40 – James C. Rogers and David S. Leigh, University of Georgia, *Modeling Stream Bank Erosion of Tributaries in the Southern Blue Ridge Mountains*

9:00 – Tanner Arrington and Allan James, University of South Carolina, *Downstream Variation in Bed Material and Bed Forms in a Southern Blue Ridge River*

11:00 – Seth Gustafson, University of Georgia, *Confluent Crises and Exurban Environmental Governance in Macon County, NC.*

11:20 – John G. Zahina-Ramos, Florida Atlantic University, *Quantifying Urban Food Sustainability: A Case Study in South Florida*

Paper Session: Economic Geography II Salon C1

Chair: Sharon C. Cobb, University of North Florida

10:00 – Ron Kalafsky, University of Tennessee, *The Export Performance of Korean Machine Tool Firms and The Use of Trade Fairs*

10:20 – Sharon C. Cobb and Ben Brandao, University of North Florida, *Economic Development Strategies Using Micro-social Networks to Forge Local-global Links: The Azores Case*

10:40 – Jonathan Kozar, UNC Charlotte, *An Exploratory Survey of Computer Service Firm Interaction and Innovation in the Charlotte Metropolitan Statistical Area*

11:00 – Maja Djorjev, University of Tennessee, *Marketing Opportunities for Small-Scale Organic Wine Producers in Slovenia: Proposing a Wine Cluster Model*

11:20 – Carol Kline, East Carolina University, *Support and Challenge Factors for Tourism Entrepreneurs: Two Cases from North Carolina*

Paper Session: Coastal Geography Windsor B

Chair: Jennifer Rahn
Organizers: Jennifer Rahn, Katherine Renken

10:00 – Kit Posadas, Mississippi State University, *Spatial Distribution in Mississippi Seafood Licenses during the 2010 Gulf of Mexico Oil Spill*

10:20 – Joanne N. Halls, UNC Wilmington, *An Integration of Satellite Imagery and LIDAR for Characterizing Change on a Barrier Island: An Example from Coastal North Carolina*

10:40 – Robert N. Saveland, University of Georgia, *Changes in the Georgia Coast 1987 - 2012*

Ann Marie Legreid, Shepherd University, *Sustainability Education: Teachable Moments and Strategies in Historic Preservation*

Mark Jenkins and Christopher Badurek, Appalachian State University, *Analysis of the Effects of Refugee Camps on the Syrian-Turkey Border using High Resolution Satellite Imagery*

Yin-Hsuen Chen and Timothy Fik, University of Florida, *The Impact of 2007 Housing Bubble - Spatial and Temporal Analysis of Signal Family House Prices in Clearwater, Florida*

Kevin Raleigh, University of Cincinnati, *A Qualitative GIS Approach to Exploring Equity in Access to Physical Activity Resources: The Case of the Licking River Greenway and Trails in Northern Kentucky*

Elizabeth Delmelle, UNC Charlotte. *Is the Land Development Trajectory of Southern Cities Still Unsustainable? The Case of Charlotte, North Carolina*

Matt Bozigar, Clark Gray, and Richard Bilsborrow, UNC Chapel Hill, *Longitudinal and Multi-Ethnic Changes in Wild Resource Utilization in the Ecuadorian Amazon*

Monday: 10:00 am – Noon

Panel Session: "Can (or Should) we 'Do More with Less'? Perspectives on Teaching, Research, and Service in an Age of Shrinking Budgets"

Alexander

Chair and Organizer: Rob Yarbrough, Georgia Southern University

Panel Members: **Rob Yarbrough**, Georgia Southern University; **Katherine Hankins**, Georgia State University; **Josh Inwood**, University of Tennessee; **Russ Ivy**, Florida Atlantic University; **Kathleen Schroeder**, Appalachian St. University

Paper Session: Graduate Student Honors Papers (PhD)

Salon A

Organizer: SEDAAG Honors Committee

Chair: Dawn Bowen, University of Mary Washington

10:00 – Maggie M. Kovach, UNC Chapel Hill, *Heat Related Illness and North Carolina: Linking Spatial Variations in Heat Related Illness to Land cover and Socioeconomic Patterns*

10:20 – Whalen W. Dillon, UNC Charlotte, *Range-wide Risks to a Foundation Tree Species from Disturbance Interactions*

10:40 – Dolores Jane Forbes, Florida Atlantic University, *Multi-Scale Multi-Temporal Analysis of DMSP-OLS Night Light Images and Economic Activity in the United States*

Paper Session: Cultural Geographies

Windsor B

Chair: Victoria Berry, Lincoln Memorial University

8:00 – Victoria Berry, Lincoln Memorial University, *Dying to Serve? An Examination of Appalachian Soldier Stereotypes*

8:20 – Stefanie Benjamin, University of South Carolina, *"White" Open Spaces – How College Students Perceive the Outdoors According to Race*

8:40 – Neil Conner, University of Tennessee, *The Religious Identity & Territoriality of Celtic FC Supporters in Belfast: An Afternoon with the IRA*

9:00 – Maria Elisa Christie¹, Peace Kyamureku², Archileo N. Kaaya³, and Alexandra Devenport⁴, ¹Virginia Tech, ²National Association of Women's Organisations in Uganda, ³Makerere University, Uganda, ⁴Kenyon College, *Kitchenspace, Participatory Mapping, and Women's Empowerment: Working with Peanut Farmers and Aflatoxins in Uganda*

9:20 – Joseph S. Miller, University of Southern Mississippi, *Pilgrimage to the Birthplace of Elvis Presley*

Paper Session: Climate and Land Use/Land Cover Change

Swannanoa

Chair: Stephanie E. Zick, University of Florida

8:00 – Stephanie E. Zick, University of Florida, *Effects of the Madden-Julian Oscillation on the Cyclogensis of Hurricane Fausto (2002)*

8:20 – Scott Curtis, East Carolina University; Doug Gamble, UNC Wilmington; Jeff Popke, East Carolina University, *When is a Drought? Reconciling Farmer Perception with the Instrumental Water Budget in Flagaman, Jamaica*

8:40 – Corene Matyas, University of Florida, *Tropical Cyclone Formation in the Mozambique Channel*

9:00 – K. Lackstrom^{1,2}, N. Kettle³, K. Dow^{1,2}, A. Brennan², B. Haywood^{1,2}, ¹University of South Carolina, ²Carolinas Integrated Sciences and Assessments, ³Alaska Center for Climate Assessment & Policy, *Climate Decision Making in the Carolinas: The Role of Information Networks in Supporting Adaptation*

9:20 – B. Haywood^{1,2}, A. Brennan², K. Lackstrom^{1,2}, N. Kettle³, K. Dow^{1,2}, ¹Univ of South Carolina Dept of Geography, ²Carolinas Integrated Sciences and Assessments, ³Alaska Center for Climate Assessment & Policy, *Climate Change Response in the Carolinas: Framing Outside the "Climate Change" Box*

Monday: 10:00 am – 12:00pm

Poster Session: Human Geography

Salon B

JongHyun Park, Hosei University, *The Spatial Patterns and the Change of the International Distribution of the Korean TV Programs*

Thomas L. Bell, Western Kentucky University and University of Tennessee and Ola Johansson, University of Pittsburgh at Johnstown, *Making a Scene: The Geography of Modern Rock Music Performance in U.S. Metropolitan Areas*

Monica A Dorning¹, Jean-Claude Thill¹, Todd K BenDor², Douglas A Shoemaker¹, and Ross K Meentemeyer¹, ¹UNC Charlotte, ²UNC Chapel Hill, *Changing Decisions, Changing Landscapes: How Would the Emerging Biofuel Market Impact North Carolina Forests?*

Erik Green and Timothy Mulrooney, North Carolina Central University, *Exploring Patterns and Factors Related to Deer-vehicle Collisions in Central North Carolina*

Jerry T. Mitchell and Larianne Collins, University of South Carolina, *The Green Book: "Safe Spaces" from Place to Place*

Tom Crawford, East Carolina University, *Impacts of Urban Form on Transportation CO₂ Emissions in Metropolitan Areas of the Coterminous U.S.*

J.O. Joby Bass, University of Southern Mississippi, *The Hat and the Cactus: cultural representations of 'Mexican' in the landscape*

J. Anthony Abbott, Stetson Univeristy and Kiryssa Kasprzyk, Indiana University, *Hot Air: University Climate Action Plans and Disarticulated Federalism*

Mike Van Atta and Robert Oliver, Virginia Polytechnic and State University, *Situating Low-Income Housing: An Uneven Urban Landscape*

Brandon Hill and Tom Crawford, East Carolina University, *Spatial Analysis of NCAA Conference Realignment: The Role of TV Market Demographics*

Korine N. Kolivras¹, Yili Hong², Jie Li², Stephen P. Prisley³, James B. Campbell¹, David N. Gaines⁴, ¹Virginia Tech Department of Geography, ²Virginia Tech Department of Statistics, ³Virginia Tech Department of Forest Resources and Environmental Conservation, ⁴Virginia Department of Health, *Spatial Patterns of Lyme Disease Emergence in Virginia*

Yingru Li and Yehua Dennis Wei, Auburn University and University of Utah, *Multidimensional Health Care Inequality in Provincial China: A Case Study of Henan Province*

Maia Call, UNC Chapel Hill, *Under the Influence: The Neighborhood Effect and Confederate Desertion in Forsyth County, North Carolina*

Christine Gares, East Carolina University, *Disaster Vulnerability of Migrant and Seasonal Farmworkers: A Comparison of North Carolina and Texas*

Viva Reynolds and Katherine Jones, East Carolina University, *Neighborhood Community Health in Greenville: A Problem-based Learning Exercise*

Karla Ilic and Dajun Dai, Georgia State University, *Examining Urban Quality of Life from Environmental and Socioeconomic Aspects*

Sarah Heck, Georgia State University, *Prefigurative Politics: The Embodied Enactment of Resistance Politics in the Occupy Movement*

Eric Delmelle¹, Wenwu Tang¹, Meijuan Jia¹, Coline Dony¹, Irene Casas², ¹UNC Charlotte, ²Louisiana Tech University, *Space-Time Densities of Infectious Diseases*

George Appling and David Salisbury, University of Richmond, *Analysis of the Socio-Environmental Impacts of Amazonian Roads: The Puerto Esperanza to Iñapari Road in Peru*

Joe Weber, University of Alabama, *The Planning and Transformation of American Urban Freeway Networks, 1955-2005*

Amanda Smith, University of North Alabama, *Spatial Patterns of Medical Incidents in a Northwest Alabama Volunteer Fire Department*

Selima Sultana and Matt Talbott, UNC Greensboro, *A Geographic Assessment of the Importance of Bus Stops Amenities for Ridership: A Transportation Equity Approach*

Justin White, Lisa Kennedy, and Yang Shao, Virginia Tech University, *Agricultural Land Conversion on La Gonave, Haiti, 1990-2010*

Jeff French and Christopher A. Badurek, Appalachian State University, *Analysis of the Effects of Large Dams on Upstream Property Values in the Southeast: Is Bigger Better?*

Ayanda M. Masilela, Virginia Tech, *Conservation in Crisis: A Story of Community Resistance Against Hydraulic Fracturing in the Yellow Creek Conservation Zone*

Ruth Bowling, University of Tennessee, *Maghreb Expressions of Presence in France*